

Commercial Filming and Photography Handbook



Updated 2025



Department of Biodiversity,
Conservation and Attractions



**PARKS AND
WILDLIFE
SERVICE**

Commercial Filming and Photography Handbook

The official manual of conditions for commercial filming and photography on lands and waters managed under the *Conservation and Land Management Act 1984* by the Department of Biodiversity, Conservation and Attractions.

Effective from April 2026.

This handbook must be carried in all Operator vehicles or vessels while conducting commercial filming operations.

The Department of Biodiversity, Conservation and Attractions

Locked Bag 104

Bentley Delivery Centre

BENTLEY WA 6983

www.dbca.wa.gov.au

© State of Western Australia October 2025

This work is copyright. You may download, display, print and reproduce this material in unaltered form (retaining this notice) for your personal, non-commercial use or use within your organisation. Apart from any use as permitted under the Copyright Act 1968, all other rights are reserved. Requests and enquiries concerning reproduction and rights should be addressed to the Department of Biodiversity, Conservation and Attractions.

If you have any queries about commercial filming or photography, the Department's licensing system or any of its licensing policies, operations or developments not covered in this handbook, the department would be pleased to answer them for you. We also welcome any feedback you have on this handbook. Please contact the Nature-based Tourism Division, contact details listed in Section 18, or visit the [department's website](#).

The recommended reference for this publication is:

The Department of Biodiversity, Conservation and Attractions, 2025, *Commercial Filming and Photography Handbook*, Perth.

The department recognises that Aboriginal people are the Traditional Owners of the lands and waters it manages and is committed to strengthening partnerships to work together to support Aboriginal people connecting with, caring for and managing Country.

Contents

1 Introduction	3
2 Frequently asked questions	8
3 Maps.....	9
4 Definitions and Interpretation	14
5 General conditions	16
6 Special conditions.....	23
7 Kimberley Region	34
8 Pilbara Region	37
9 Midwest Region	38
10 Goldfields Region	40
11 Wheatbelt Region.....	40
12 Swan Region.....	41
13 South West Region	42
14 Warren Region	42
15 South Coast Region.....	42
16 Regional Parks.....	43
17 Bibbulmun Track, Cape to Cape Track and Munda Bidli Trail	43
18 Contact Details	44

1 Introduction

1.1 Background

The Department of Biodiversity, Conservation and Attractions (the department) supports and encourages both private and commercial filming and photography on land and waters managed under the [Conservation and Land Management Act 1984](#) (CALM Act) that promotes community awareness, understanding and support for nature conservation, land management, cultural heritage and significance, in a manner that is consistent with the purpose for which the land is vested or managed.

With an increasing awareness of the environment worldwide, there has been a corresponding increase in interest in filming and photography on CALM Act land. These lands and waters contain a wide range of features that are of interest to commercial filmmakers and photographers.

Commercial filming on CALM Act land can make a significant contribution towards helping to raise awareness of conservation issues and promoting the appreciation and use of parks and reserves. However, there is a need to ensure that the activities of those undertaking commercial filming do not damage the environment, conflict with the enjoyment of other users, incorrectly present information, impact on culture and heritage values or promote inappropriate behaviour.

The protection of natural, cultural, heritage and landscape values are key considerations when the department assesses applications for commercial filming. The way an area is portrayed in the final film product can impact these values. It is therefore important that filmmakers and photographers consult with the department before commercially filming on CALM Act land, and that there are procedures in place to ensure the protection of an area's acknowledged values.

1.2 The department's responsibilities

The department manages Western Australia's conservation estate, including national parks, marine parks, conservation parks and state forest, to conserve Western Australia's biodiversity, cultural and natural values and recreation experiences for the community.

As of February 2025, the department manages over 34 million hectares of land and water. This includes 122 national parks, 12 regional parks, conservation parks, State forest, nature reserves and other land, 21 marine parks, two marine management areas and one marine nature reserve. The department manages this land on behalf of the people of Western Australia. Management of land under the CALM Act and Regulations is under the direction of the Minister for Environment and the Conservation and Parks Commission (the Commission), and where jointly vested, under the direction of the joint management bodies. All of the department's land management activities on CALM land are derived from management plans prepared by the Commission through the department, or as necessary or compatible operations as defined under the CALM Act.

The department has a responsibility to protect and conserve the value of the land to the culture and heritage of Aboriginal persons, in particular from any material adverse effect. Operators are asked to be aware of these legislative provisions and to keep in mind that some Aboriginal sites (such as rock art sites) may be of particularly high cultural value or sensitivity and may be restricted or subject to specific cultural protocols or entry conditions. Information about the Aboriginal heritage for a particular area can best be obtained through consultation with the relevant Aboriginal people such as registered Native Title claimants or Native Title holders and the Department of Planning, Lands and Heritage (DPLH).

The department also manages Rottnest Island, Kings Park and Botanic Garden, Bold Park and Perth Zoo under separate legislation and under the direction of relevant authorities. Advice should be sought from these authorities for commercial filming and photography at these locations.

The department collaborates closely with the community and other organisations such as the Department of Primary Industries and Regional Development, DPLH and local government authorities that have management responsibilities in or on adjacent lands to ensure regulatory and management practices are complementary.

1.3 What is commercial filming?

Commercial filming is defined as any filming or photography activity undertaken on CALM Act land for any of the following purposes, regardless of the medium or format used (e.g. video clips, digital, magnetic tape, celluloid, still, motion):

- advertising (such as the creation of commercials);
- ongoing commercial filming that is conducted by a business, for example, where a filmmaker or photographer accompanies tours to create and sell personal films and photographs for people on the tour;
- production films, documentaries, educational films, government-sponsored films or tourism promotions;
- workshops or courses; and
- any filming or photography activity which involves the use of film crews, props, sets, models, instructional materials and group activities, the utilisation of departmental staff and resources and/or access to locations beyond areas made available to normal visitors to CALM Act land.

Where photography and filming are for the above purposes, under regulation 108 of the [Conservation and Land Management Regulations 2002](#) (CALM Regulations), lawful authority must be obtained.

1.4 What is non-commercial filming?

Park visitors do not need approval from the department to undertake non-commercial filming activities on CALM Act land. If undertaking non-commercial filming activities, visitors must ensure they are aware of and follow park rules, comply with all laws relating to the activity, be respectful of Aboriginal culture and heritage values and only access designated areas open to the public. If using drones, visitors must follow the rules for using [drones in parks](#).

The following activities are generally **not** considered commercial filming by the department:

- filming or photography carried out on CALM Act land by individuals (single photographers or filmmakers with no crew or significant equipment, filming in designated visitor areas) where the primary intent for filming is of a personal or private nature;
- speculative filming and photography that may be the subject of a future commercial transaction whereby the resulting images are reproduced in postcards, calendars, prints, publications, documentaries or displayed in galleries or on private and/or public websites;
- the taking of photographs, film and videos for the news media of the day and current affairs. This does not include planned stories/features;
- students conducting small scale filming or photography operations as part of the educational institution curriculum;
- photography or filming for weddings and portraits; and
- photography or filming by park visitors for private purposes only.

For further advice on your proposed filming operation and whether it is considered non-commercial, please email the department at filming@dbca.wa.gov.au.

1.5 Commercial filming licences and lawful authorities

Section 33 of the CALM Act states that the CEO of the department is responsible for the conservation and protection of flora and fauna throughout the State, and also the promotion and facilitation of public recreation on lands and waters to which the CALM Act applies.

Regulation 94(1) of the CALM Regulations enables the CEO to grant a licence to any person to sell goods or services, or to undertake an activity for a commercial purpose, on an area of CALM Act land. The CALM

Regulations also set out how commercial licences are to be granted. Under the CALM Regulations, penalties may apply to commercial filming activities undertaken without a licence or lawful authority, and to breaches of the licence/lawful authority conditions.

Under regulation 108, a person is required to obtain lawful authority to take any still or motion pictures by photographic or electronic means on CALM Act land if the pictures are to be used for commercial purposes. All commercial filming operations undertaken on CALM Act land require a licence, unless it is determined by the department that the operation will have a major benefit to State of WA or it is likely to increase the appreciation, awareness and understanding of WA's natural and/or cultural environment. In these cases, a lawful authority will be issued instead of a licence and the applicant will qualify for a waiver. For further information on fee waivers refer to section 1.8.

1.6 Licences

Licences are a legal basis that allows approved commercial filming operations to occur on CALM Act land. A licence is granted in accordance with Part 7 of the CALM Regulations, which allows the CEO, with the approval of the Minister for Environment to authorise a person or organisation to sell goods or services or carry on business, in this case undertake a commercial filming operation on CALM Act land. Licences are subject to fees and charges.

A commercial filming licence will be issued where:

- The activity is ongoing and would be considered an ongoing business (under the provisions of Regulation 106), for example, where a filmmaker and photographer accompanies tours to create and sell personal films and photographs for people on the tour.
- The resulting filming/photography product will be used to sell a specific good or service, for example, an outdoor equipment company advertising a brand of footwear, or a car company advertising a new 4WD vehicle.

1.7 Lawful authorities

Lawful authorities are another legal basis that allows approved commercial filming operations to occur on CALM Act land. A lawful authority refers to a written notice granted by the CEO (or his Delegate) in accordance with Regulation 4 of the CALM Regulations, which authorises a person or organisation to undertake a commercial filming operation that would, but for that notice, be unlawful under the CALM Regulations.

A lawful authority will only be considered if it can be determined the commercial filming operation:

- will have a major benefit to the State of WA;
- will have a major benefit to tourism in WA; and/or
- is likely to increase the appreciation, awareness and understanding of the natural and/or cultural environment in WA and benefit the department's management objectives.

1.8 Fees and charges for commercial filming

Commercial filming on CALM Act land may be subject to payment of fees, charges or remuneration of costs. Current commercial filming fees and charges can be found on the [department's website](#).

Licence charges

A licence charge to access CALM Act land for commercial filming applies to commercial filming licences. These charges are levied in accordance with the CALM Regulations. Charges vary according to the type of commercial filming operation and the length of time that is required to access CALM Act land.

Higher charges may be applied by the department based on the scale of the production. For instance, a large-scale advertising production which uses a well-known or significant feature, such as the Pinnacles at Nambung National Park or the Bungle Bungle Ranges in Purnululu National Park may attract substantially

higher charges than the standard charge. These charges will be set by the department during the application process and may include administrative costs.

Application fees

Application fees are an administration fee set under the CALM Regulations that, unless waived, must be paid by every applicant.

Supervision and service fees

The department may request payment for recovery costs for the provision of advice or services, performance of work and/or supply of services or facilities. Such costs may be incurred if the commercial filming operation:

- requires the involvement of departmental staff for reasons including (but not limited to), determining appropriate locations and supervision during filming;
- requires management of access to sensitive areas (e.g. sites of significance to Aboriginal people and fauna habitats); and/or
- involves factors likely to cause a need for management supervision, such as environmental impact.

The fees will vary according to the supervision requirement, location of the filming, the scale of the production, as well as other factors.

Bonds

It may be a condition of a licence or a lawful authority that a bond is required for the purpose of repairing, rehabilitating or cleaning up an area as a result of a commercial filming operation. The bond amount will be determined by the department based on the activities proposed and the number of people and equipment involved. The bond will be required before a licence or a lawful authority is granted.

Park entry and camping fees

Licence or lawful authority holders do not have to pay entry fees to [parks where entry fees apply](#). A copy of the licence or lawful authority should be shown at the entry point upon arrival.

Licence and lawful authority holders must pay camping fees where applicable.

Waivers

The department may waive fees and charges for commercial filming operations on CALM Act land where a lawful authority to film is provided instead of a licence.

The department may also waive other fees when a lawful authority is granted such as recovery costs for supervision.

Each commercial filming application will be assessed on a case-by-case basis by the department to determine whether a licence or lawful authority is appropriate.

1.9 Conditions for licence and lawful authority holders

Licence and lawful authority holders must abide by all the conditions that apply to their commercial filming operation.

The standard conditions for commercial filming operations are set out in this handbook, however, during the application process the department may apply extra conditions that are not set out here. Additional conditions will be attached to the commercial filming licence or lawful authority.

Please ensure that you are aware of, understand and abide by all conditions attached to your licence or lawful authority.

A licence or lawful authority holder, who breaches a condition, may incur a fine and result in the suspension of their licence or lawful authority. A person, who, without a licence or lawful authority

undertakes a commercial filming operation on CALM Act land, commits an offence under the CALM Regulations which may also result in a fine.

1.10 The purpose of the Commercial Filming and Photography Handbook

The Commercial Filming and Photography Handbook provides direction and guidance on how the department administers applications for commercial filming under the CALM Act.

The handbook also serves to:

- ensure the protection and conservation of WA's natural and cultural environments, including the protection and respect of Aboriginal sites;
- ensure commercial filming and photography portrays the department, departmental staff and CALM Act land in an appropriate manner;
- clearly identify standard conditions that apply to commercial filming operations undertaken on CALM Act land; and
- minimise risks to commercial filmmakers, visitors and departmental staff.

1.11 How to use the Commercial Filming Handbook

Conditions are presented in the handbook under major headings and begin with (a), (b), (c), (i), (ii), (iii) etc.

Operators must be aware of, understand and abide by all conditions attached to their filming licence or lawful authority by following the below steps.

1. Read the general conditions that apply to all commercial filming operations undertaken on CALM Act land in **Section 5. General Conditions**.
2. Read the issues and extra conditions that apply to commercial filming operations undertaken on CALM Act land in **Section 6. Special Conditions**.
3. Find any relevant regional and park-specific information and conditions that apply to the area in which your commercial filming operation takes place in **Sections 7 to 17**. These sections are presented according to the department's regions and regional parks.

Please remember that the department may apply other conditions on a case-by-case basis that are not set out in this handbook.

2 Frequently asked questions

2.1 What is commercial filming?

Commercial filming is defined as any filming or photography activity undertaken on CALM Act land for commercial purposes regardless of the medium or format used (e.g. video clips, digital, magnetic tape, celluloid, still, motion). See Section 1.3 for further information.

2.2 Why does the department require a licence or lawful authority to be held for commercial filming?

The department issues licences or lawful authorities for all commercial filming operations on CALM Act land because it is a legal requirement under the CALM Regulations. In addition, licences or lawful authorities provide a means for the department to manage and monitor land uses so that they are ecologically sustainable and equitable. This helps to ensure that the values of CALM Act land are maintained and that visitors can continue to visit and enjoy these areas.

2.3 When is a licence required?

A licence is required for all commercial filming operations undertaken on CALM Act land, unless a lawful authority is granted as an alternative.

2.4 When is a lawful authority to film granted instead of a licence?

A lawful authority will be granted where the department deems a waiver of licence fees and charges is appropriate. See Section 1.7 for further information.

2.5 When is a licence or a lawful authority NOT required?

A licence or a lawful authority is not required for all private or non-commercial filming undertaken on CALM Act Land. See Section 1.4 for further information.

2.6 How do I apply for a commercial filming licence or lawful authority?

Commercial filming applications are submitted online through the department's Commercial Operator Licensing System (COLS).

To access COLS and further information on how to apply, see the [department's website](#).

It is recommended that applicants read the general conditions found in this handbook that apply to their proposed commercial filming operation before applying.

2.7 How long will the application take to be processed?

The department requests that all commercial filming applications should be submitted at least four weeks before the expected start date of the filming operation. This ensures the proper assessment of each application. Failure to provide sufficient time may lead to the licence or lawful authority not being issued by the requested date.

Applications may take considerably longer if it is determined that it requires a higher level of assessment by the department or consultation regarding Aboriginal cultural sensitivities including for conservation estate that is both jointly managed and jointly vested with Traditional Owners. In all cases, it is in an applicant's interest to allow as much time possible for an application to be processed.

2.8 In what instances could an application be refused?

The department may refuse any application or otherwise determine the location, time and frequency of any proposed commercial filming at its discretion for reasons including, but not limited to, the area being environmentally sensitive and unable to support the activities or having an unacceptable risk of spreading pathogens or weeds; the activities unduly disrupting other visitors or users; fire risk; or potential impacts on Aboriginal culture and heritage values.

3 Maps

3.1 Western Australia's marine parks and reserves

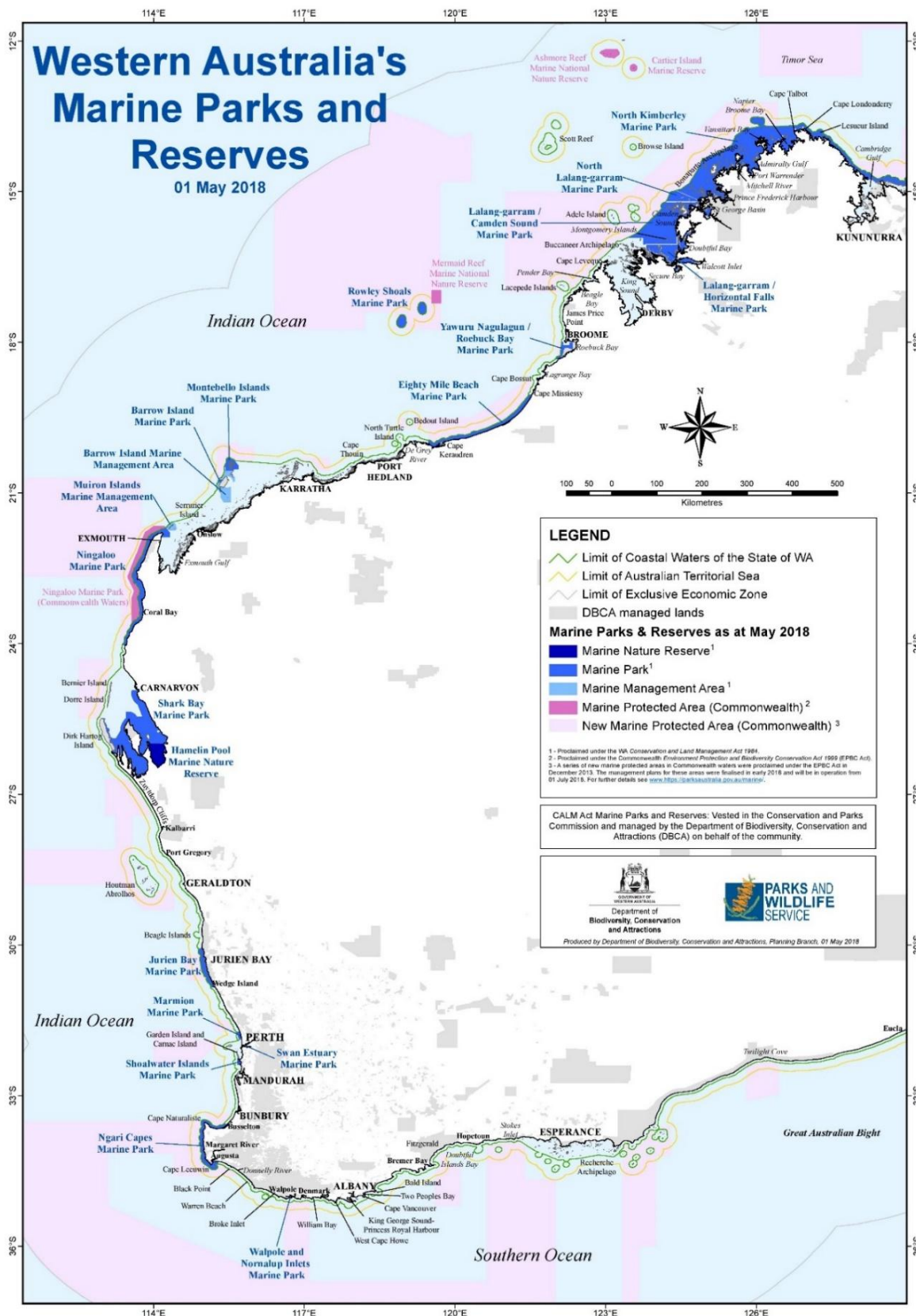


Figure 3.1.1 Map of Western Australia's Marine Parks and Reserves

3.2 Map of Parks and Wildlife managed land and waters

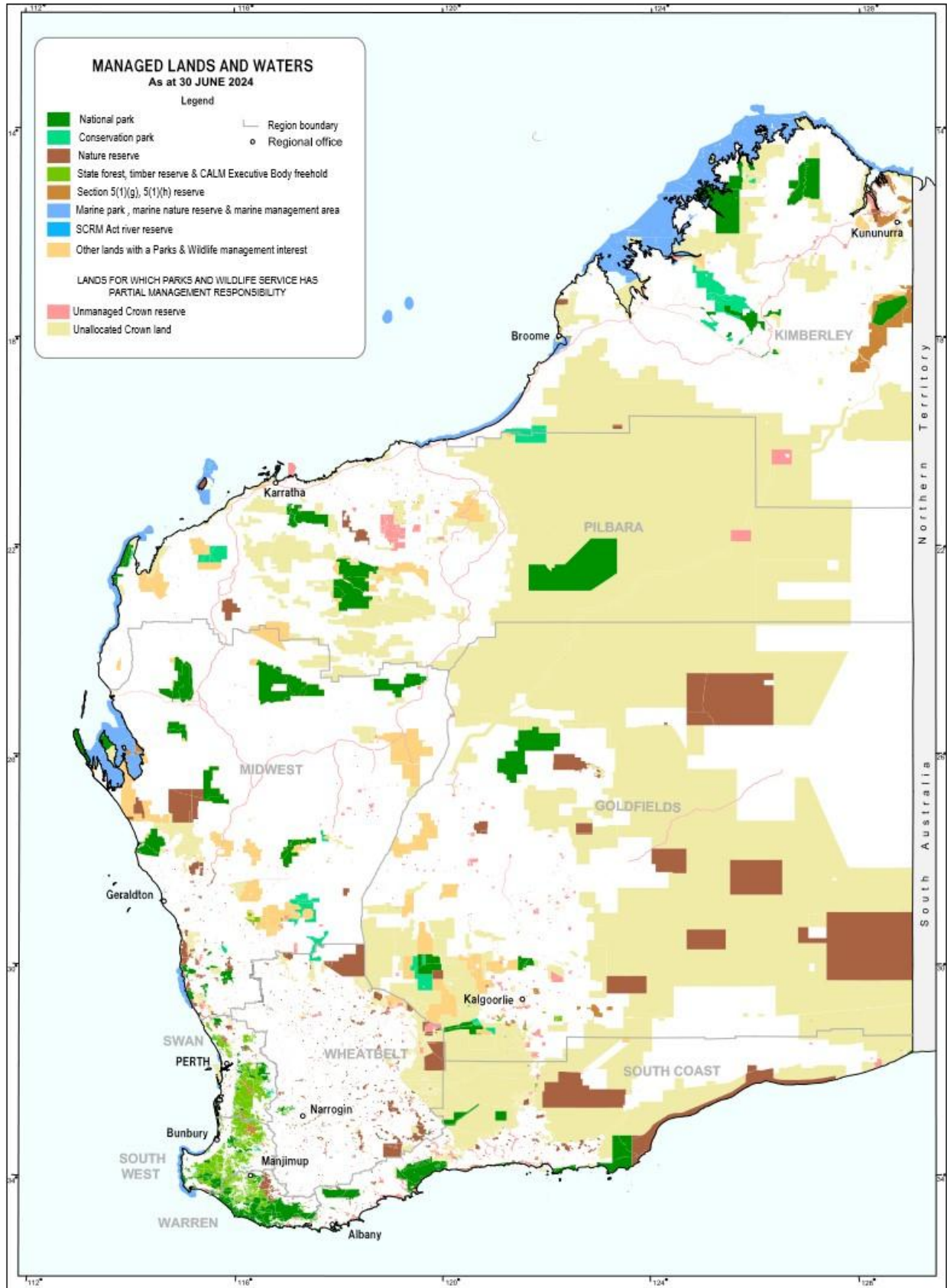


Figure 3.2.1 Map of Parks and Wildlife managed lands and waters.

3.3 Western Australian region and district boundaries

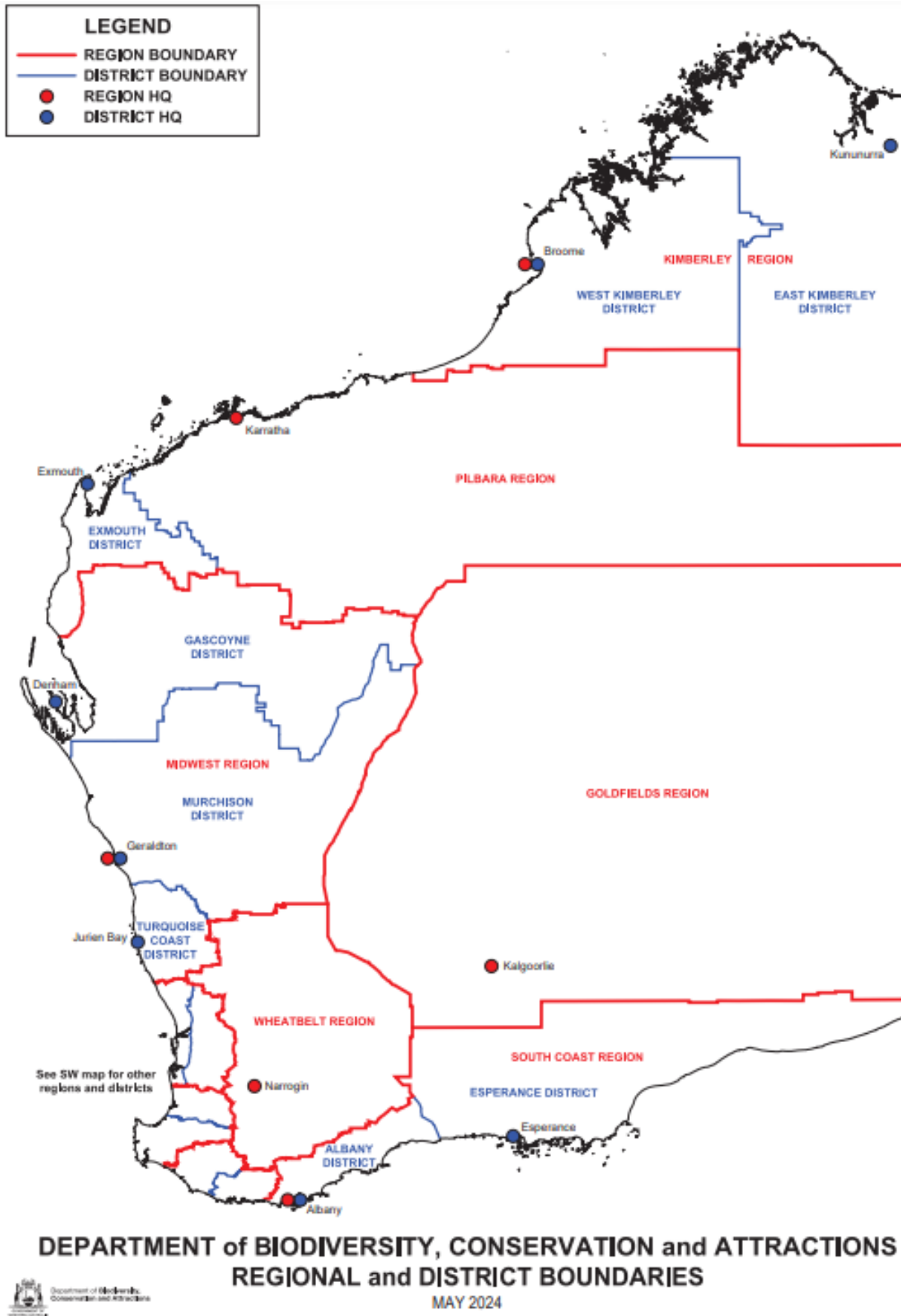
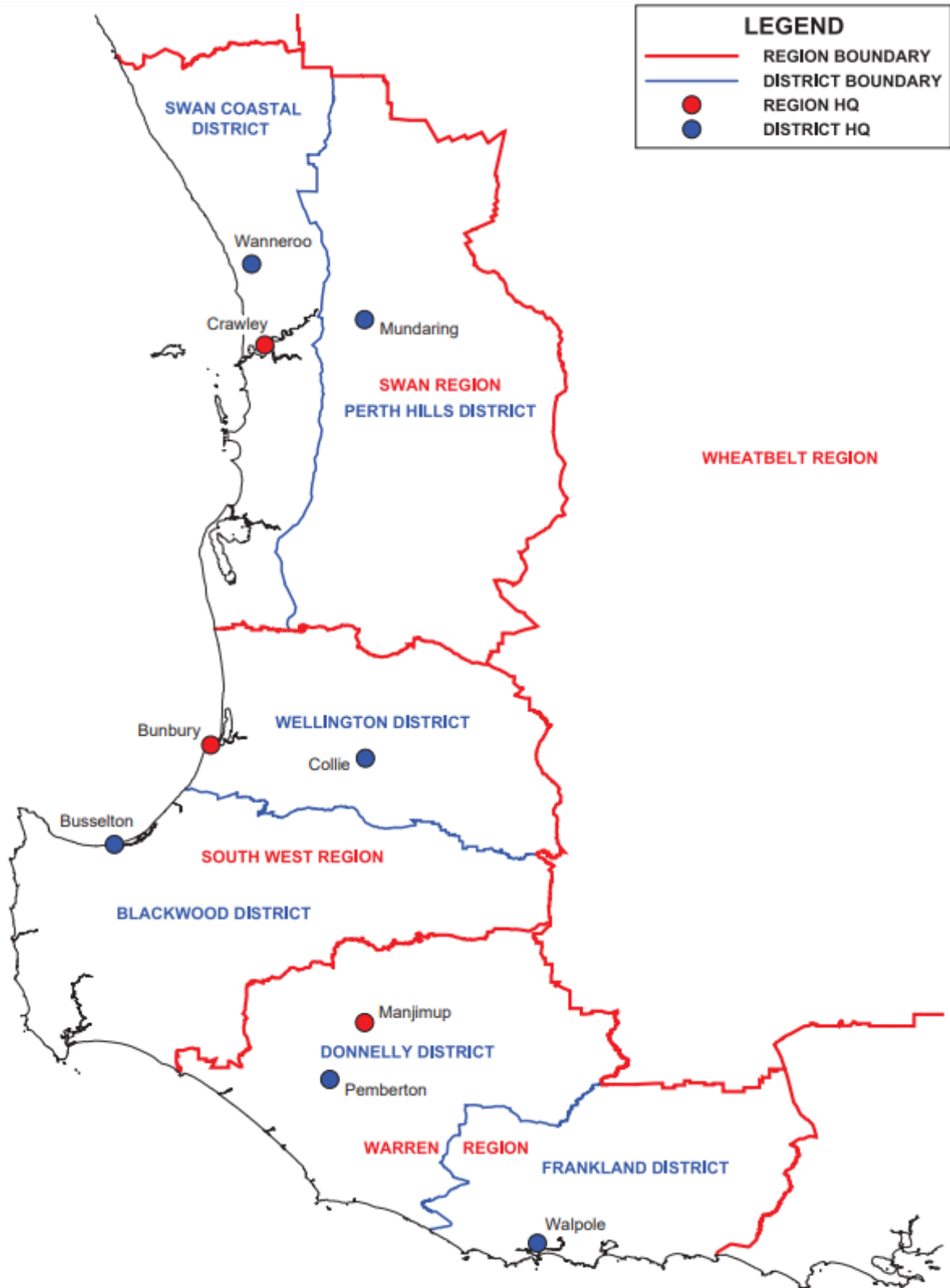


Figure 3.3.1 Map of Western Australian region and district boundaries.

3.4 Map of south-west region and district boundaries



DEPARTMENT of BIODIVERSITY, CONSERVATION and ATTRACTIONS
REGIONAL and DISTRICT BOUNDARIES - SOUTH WEST WA

MAY 2024



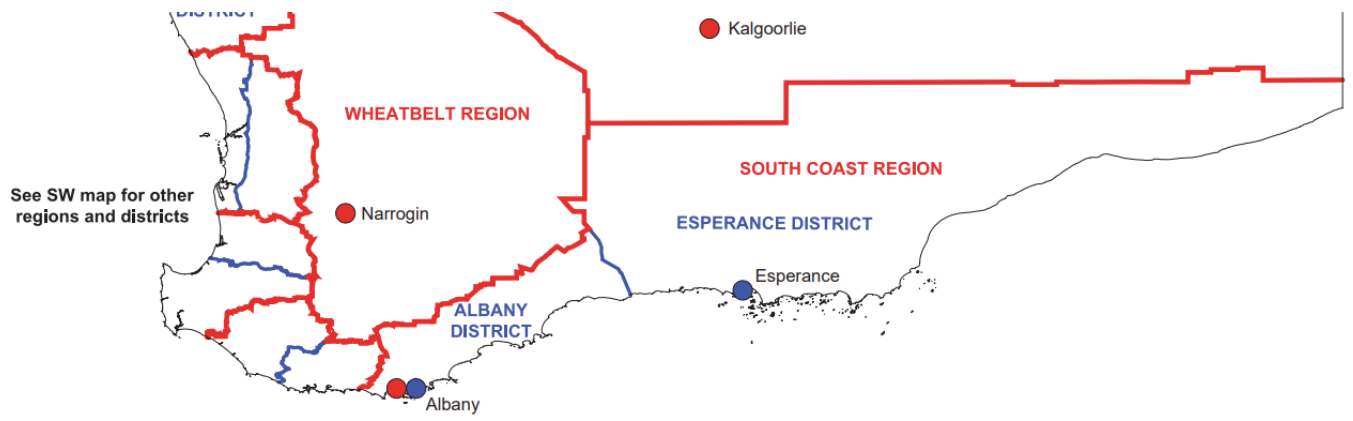


Figure 3.4.1 Map of south west region and district boundaries.

4 Definitions and Interpretation

4.1 Definitions

In this handbook, unless the context otherwise requires:

aircraft means any machine or craft that can derive support in the atmosphere from the reactions of the air, other than the reactions of the air against the earth's surface. This includes powered or unpowered and remotely piloted aircraft.

Authorised Officer is a person covered under sections 45, 46 and 102(1) of the CALM Act.

CALM Act means the *Conservation and Land Management Act 1984*.

CALM Act land means land, or land and waters, to which the CALM Act and CALM Regulations apply, and includes caves and parts of caves on or under that land.

CALM Regulations means the Conservation and Land Management Regulations 2002.

charges mean daily rates payable, as applicable, for permission to access and use CALM Act land for commercial filming and photography levied by way of a commercial filming licence.

commercial filming means any filming or photography activity undertaken on CALM Act land for commercial purposes, regardless of the medium or format used (e.g. video clips, digital, magnetic tape, celluloid, still, motion).

commercial filming operation means a commercial filming or photography activity undertaken on CALM Act land.

conditions mean the conditions set out in this handbook or attached to a licence or lawful authority.

Delegate means a person delegated a function of the Minister under section 133(1) of the Act, or a person to whom a function or functions of the CEO have been delegated under section 133(2) of the Act, as the case requires.

Department means the Department of Biodiversity, Conservation and Attractions.

Director General means the chief executive officer (CEO*) of the department, or a person employed by the department to whom a function or functions of the CEO has or have been delegated under section 133(2) of the Act or a delegate of the CEO.

fees mean those fees payable in respect of entry onto CALM Act land or in respect of operations, as specified in the CALM Regulations and any other fees for which the CEO has power to levy.

filming authority means a commercial filming lawful authority or licence.

handbook means the Commercial Filming and Photography Handbook.

lawful authority means a filming and photography lawful authority granted by the Director General (or his Delegate) in accordance with regulation 4 of the CALM Regulations, which authorises a person or organisation to undertake a commercial filming operation that would, but for that notice, be unlawful under the CALM Regulations.

licence means a commercial filming licence. This licence is granted by the Director General under Part 7 of the Regulations that authorises a person to sell goods or services or carry on business, in this case to undertake filming or photography for a commercial purpose on CALM Act Land.

Minister means the Minister administering the CALM Act, or a delegate of the Minister.

operations mean the commercial filming operations which may be undertaken by an Operator pursuant to the filming authority.

Operator means a person or entity (includes companies and incorporated bodies) that holds a filming authority to undertake a commercial filming operation on CALM Act land. This includes the Operator's employees, agents and contractors.

regional or district manager means a person in that position within the relevant department region or district in which the park or reserve is located.

vehicle means any mode of transport including but not limited to cars, buses, vessels, horses, cycles or motorcycles.

4.2 Interpretation

- (a) A reference to anything that the Operator shall or shall not do includes, where the context permits, the Operator's employees, agents and contractors.
- (b) The singular includes the plural and vice versa.
- (c) A reference to any thing is a reference to the whole or any part of it and a reference to a group of things or persons is a reference to any one or more of them.
- (d) If the Operator consists of a partnership or joint venture, then:
 - (i) an obligation imposed on the Operator binds each person who comprises the Operator jointly and severally;
 - (ii) the act of one person who comprises the Operator binds the other persons who comprise the Operator; and
 - (iii) a breach by one person who comprises the Operator constitutes a breach by the Operator.
- (e) A reference to a statute, ordinance, code or other law includes regulations and other instruments under it and consolidations, amendments, re-enactments or replacements of any of them.
- (f) If a word or phrase is defined, other grammatical forms of that word or phrase have a corresponding meaning.
- (g) If the word 'including' or 'includes' is used, the words 'without limitation' are taken to immediately follow.

5 General conditions

5.1 Compliance with laws

Conditions in this section apply to all persons or organisations undertaking a commercial filming operation on CALM Act land.

- a) The Operator shall comply with all laws relating to the conduct of the operations, including but not limited to:
 - (i) the [CALM Act](#);
 - (ii) the [CALM Regulations](#);
 - (iii) the [Biodiversity Conservation Act 2016](#) (BC Act);
 - (iv) the [Biodiversity Conservation Regulations 2018](#) (BC Regulations); and
 - (v) any other Act, Regulation or By-laws.
- b) Depending on where an Operator is conducting operations, other legislation administered by the Department may also apply. This includes, but is not limited to:
 - (i) [Rottnest Island Authority Act 1987](#);
 - (ii) [Swan and Canning Rivers Management Act 2006](#);
 - (iii) [Botanic Gardens and Parks Authority Act 1998](#); and
 - (iv) [Zoological Parks Authority Act 2001](#).
- c) The Operator acknowledges and accepts that a filming authority does not authorise the use of CALM Act land other than the areas listed on the filming authority.
- d) The Operator acknowledges and accepts that any failure to abide by the conditions of this handbook and the conditions attached to a filming authority will constitute grounds for its suspension, alteration or termination and the Operator shall be given notice of any infringement and be required to show cause why the filming authority should not be terminated.
- e) The Operator acknowledges and accepts that the regional or district manager or their delegate has full on-site control, and may alter the activities at any time, including postponing of the filming activities, if deemed necessary by the department.
- f) The Operator agrees that they will not represent themselves as an agent of the Department or the Director General or in any way purport to act for or on behalf of the Department or the Director General in carrying out the approved activity.
- g) The Operator acknowledges and accepts that the filming authority is subject to any necessary approval(s) being obtained from all other relevant authorities including but not limited to local government/s: Water Corporation: WA Police; and Department of Transport.
- h) The Operator shall inform all employees, agents and contractors who are employed or engaged in relation to the operations, and ensure they comply with, the terms of the lawful authority/licence and the conditions relevant to the operations and any other conditions or restrictions applied to the filming authority.
- i) The Operator agrees to publicly acknowledge the contribution of the Department in any credits for the photograph or film by inclusion of the statement “Produced with the assistance of the Department of Biodiversity, Conservation and Attractions, WA” if so required by the Department.
- j) The Operator acknowledges and accepts that a copy of the final film product or scientifically important unedited sequence will be supplied at the Department’s expense (cost of making a copy of the footage or still photo) if so required by the Department.

- k) The Operator agrees to comply with any request by the Department to preview the final film product to ensure that the Department's policies and legislation are not contravened.
- l) The Operator shall ensure the final film product does not show any footage that promotes activities in breach of the filming authority conditions and shall edit the film product to remove such footage if requested by the Department.

5.2 Fees, charges and payment

- a) In consideration of a licence, the Operator shall pay the Director General, if applicable, a licence charge (as determined by the Director General). The charge is payable as determined by the Director General.
- b) The Operator shall pay all fees and charges arising in or in relation to the operations in a manner approved by the Director General.
- c) In the event of late payment of fees, the Operator shall pay a surcharge together with the fees in accord with the guidelines set down by the Director General. The fees are payable as determined by the Director General.
- d) The Operator shall pay camping and other fees where applicable.

5.3 Communicating with the relevant Departmental region and district

- a) The Operator shall contact the relevant Department region(s) and district(s) in which they are conducting filming operations to provide notification or an itinerary of when and where they are operating at least 48 hours prior to commencing commercial filming activities.

This contact enables the district to alert operators to any other planned events, prescribed burns or park closures that may affect their operations. Specific contact requirements for parks are listed through sections 7 to 17 with general regional and district contact details listed in section 18.

5.4 Risk and safety

- a) The Operator agrees to conduct operations entirely at the Operator's own risk and the Operator shall inform itself, its employees, agents and contractors in either a written or oral form in a language understood by the employees, agents and contractors regarding the risks and dangers arising from the operations that are likely to be encountered on CALM Act land.
- b) The Operator shall carry appropriate safety and first aid equipment at all times while on CALM Act land.
- c) The Operator shall ensure that appropriate risk management systems, strategies and procedures are in place to minimise foreseeable risks to the environment, the values of the parks and reserves, the Operator's employees, agents or contractors and other members of the public, and shall produce evidence of such systems, strategies and procedures if requested by the Director General.
- d) The Operator shall ensure at least one person that is present during the operations has a current Apply First Aid Certificate (National Training requirement HLTAID003) or equivalent.
- e) The Operator acknowledges and accepts that it will, if so directed by the Department, reimburse the Department for any costs of search or rescue incurred by the Department arising or in connection with the conduct of the activity or the presence of the Operator in the park or reserve.

5.5 Reporting incidents and property damage

- a) Where an incident occurs during the course of operations on CALM Act land, the Operator shall use the department's [Commercial Operator Incident Report form](#) to make a report on any of the following:
 - (i) any incident involving the Operator or the Operator's employees that results in a fatality, or injury to any person that requires medical attention a doctor, medical facility or hospital;
 - (ii) any incident or near miss in which the safety of the Operator or the Operator's employees was at risk, or where emergency services were contacted;

- (iii) any damage to the Department's property caused by the Operator or any of its employees;
 - (iv) any environmental damage caused by the Operator, the Operator's employees or passengers;
and
 - (v) any fatality or injury to fauna that results from Operator vessel or vehicle strike.
- a) The Operator shall complete and submit the [Commercial Operator Incident Report form](#) to the nearest department office within 48 hours of the incident occurring.
 - b) If the Operator was not present at the time of the incident, the Operator shall require each of its employees who were involved in or observed the incident to provide the Operator with supporting reports on the incident using the [Commercial Operator Incident Report form](#). The Operator shall submit these supporting incident reports along with their own incident report.
 - c) The Operator shall report to the nearest department office any details of any sick or injured wildlife and marine fauna on CALM Act land.
 - d) The Operator shall immediately report to the nearest Department office any outbreak of fire or other observed safety risk near the Operator's operations.
 - e) The Operator agrees that neither the State, department, nor the Director General take any responsibility or liability for the security, loss, damage or otherwise of any vehicle, vessel, machinery, equipment or other goods or property owned by, or under the control of, the Operator or passengers.

5.6 Indemnity

- a) If a filming authority is granted:
 - (i) the Operator agrees to release the State of Western Australia and all of its officers, agents, emanations and instrumentalities (collectively, "the State") from and in respect of any liability (in negligence or howsoever) the State would incur or would otherwise incur directly on account of being the owner of, or having the possession or control of, the area in relation to the activities that are the subject of this filming authority
 - (ii) Subject to clause 5.6 b), the Operator agrees to indemnify the State from, against and in respect of all loss, claims, lawsuits, proceedings, causes of action, damage, liability, costs, expenses, demands and the like suffered or incurred by or brought, made or alleged against the State to the extent caused or contributed by -
 - 1) any tortious, civil or actionable wrong by or on behalf of the Operator or any officer, employee, agent, contractor or their sub-contractor, or invitee of the Operator; or
 - 2) the conduct of the Operator or any of its employees, agents, contractors or sub-contractors in relation to the activities of the filming authority, but only to the extent that the relevant risk, hazard or danger (which caused or gave rise to, or related to, any such loss, claim, lawsuit, proceedings, cause of action, damage, liability, costs, expenses, demands or the like) was or should have been known by the Operator taking into account all relevant factors including, to the extent such matters are relevant.
- b) The Release in clause 5.6 a)(i) and indemnity in clause 5.6 a)(ii), above will not apply to the extent that any claims, actions, demands, suits, proceedings, damages, liabilities, losses or costs made or brought against, suffered or incurred by the State are caused or contributed to by the State's own negligence, act, default or omission.

5.7 Insurance

- a) The Operator shall at all times during the period of the filming authority maintain a policy of public liability insurance that covers the areas and operations allowed under the filming authority, in the name of the Operator to the extent of its rights and interests, for a sum of not less than AU\$10 million per event.

- b) The Operator shall provide the Director General proof of the existence and currency of such insurance policy whenever requested by the Director General during the term of the filming authority.
- c) The Operator shall pay all premiums of the public liability insurance policy when they are due, comply with all terms of that policy and shall make the insurer aware of the licence, these conditions and the indemnity and release referred to in section 5.6.

5.8 Employees, agents and contractors

- a) The Operator shall:
 - (i) only employ or engage competent and qualified employees, agents and contractors in relation to the operations;
 - (ii) fully inform all employees, agents and contractors employed or engaged in relation to the operations of the terms of the filming authority and these conditions relevant to the operations and any other conditions or restrictions applied to the filming authority;
 - (iii) ensure that all employees, agents and contractors employed or engaged in relation to the operations of the filming authority comply with the terms of the filming authority, these conditions and any other conditions or restrictions relevant to the operations.
- b) In accepting the licence, the Operator agrees that a breach by any employee, agent or contractor of the Operator of any of the terms, conditions or restrictions imposed upon the filming authority shall constitute a breach by the Operator and that the Operator shall be vicariously liable for such breaches.
- c) Without the written approval of the Director General an Operator shall not employ or engage an employee, agent or contractor for operations on CALM Act land that has been convicted in the past 10 years of:
 - (i) an offence under the CALM Act carrying a penalty of \$400 or greater;
 - (ii) an offence under the CALM Regulations carrying a penalty of \$200 or greater;
 - (iii) an offence under the BC Act carrying a penalty of \$4000 or greater;
 - (iv) an offence under the BC Regulations carrying a penalty of \$2000.

5.9 Access, records and reports

- a) The Operator shall carry a copy of their filming authority and this handbook (either in hard copy or electronic format) at all times while on CALM Act land or in the Operator's principal method of access to the CALM Act land (vehicle/vessel) so that the Operator has reasonable access to the handbook and the copy of the filming authority contained therein.
- b) The Operator shall provide to the Director General any information in relation to the operations which the Director General may reasonably require for the purposes of research or management.
- c) If requested/advised in writing by the Director General, the Operator shall make available free of charge, a position on the operations for an Authorised Officer and any relevant staff that could be reasonably considered by the Director General, regional or district manager to be involved in the research, management and monitoring of the operations, for the purpose of observing the conduct of operations.

5.10 Notice of default

- a) If the Operator fails to comply with any of these conditions or any other condition of the filming authority, the Director General may by notice to the Operator require the Operator to remedy such failure within a reasonable time.
- b) If the Operator fails to comply with the notice within the time specified, the Director General may immediately cancel or suspend the filming authority.

- c) Any notice to the Operator shall be in writing and may be served upon the Operator by addressing it to the Operator and sending it by post to, or leaving it at, the address registered with the Department.

5.11 Rights reserved

- a) The Operator acknowledges and accepts that:
- (i) without limiting the rights of the Director General, the Director General reserves the right to suspend or cancel the filming authority.
 - (ii) the expiry, cancellation or termination of the filming authority (whether under the CALM Regulations or arising from a breach by the Operator) does not affect any rights the Director General may have in relation to the Operator as a result of anything occurred prior to the expiry, cancellation or termination of the filming authority;
 - (iii) the Director General reserves the right to add to, cancel, suspend and otherwise vary the terms and conditions of the filming authority at any time.

5.12 Limitation of filming authority

- a) The Operator acknowledges and accepts that:
- (i) the filming authority does not give the Operator exclusive rights to access CALM Act land nor exclusive rights to conduct the operations;
 - (ii) the Operator shall ensure that all other necessary approvals required for the conducting of commercial filming operations are obtained and presented to the Director General if required;
 - (iii) the filming authority does not authorise the Operator to use land other than CALM Act land;
 - (iv) the Operator shall ensure that all the necessary approvals or permission required from lessees/owners of properties other than the Department are obtained before using roads/tracks/facilities on their properties or leased areas;
 - (v) the Operator shall be responsible for all set-up costs (including but not limited to marketing and development costs, capital investment and infrastructure) associated with the operation and indemnifies the Director General against any loss or expenses should the filming authority be cancelled.

5.13 No agency

- a) The Operator acknowledges and accepts that nothing in the filming authority may be construed to make either the Operator or the Director General a partner, agent, employee or joint venture of the other.

5.14 No assignment or transfer

- a) The Operator shall not:
- (i) sell, transfer, assign, mortgage, charge or otherwise dispose of or deal with any of its rights or obligations under the filming authority;
 - (ii) subcontract the operations.
- b) The Operator acknowledges and accepts that for the purposes of 5.14a)(i), if it is a corporation, transfer is taken to mean if:
- (i) anything occurs, the effect of which is to transfer, directly or indirectly, the management or control of the Operator to another person;
 - (ii) if there is a change of shareholding of the Operator of more than 25 per cent of the issued shares of the Operator.

5.15 Directions

- a) The Operator shall comply with all verbal and written directions issued to it by an Authorised Officer appointed pursuant to sections 45 or 46 of the CALM Act.

5.16 Dealings with CALM Act land

- a) The Operator shall, in respect to CALM Act land:
- (i) shall not do, cause or omit to do any act or thing that may detract from the reputation of the department or CALM Act land;
 - (ii) ensure all rubbish arising from the operations is removed prior to departure from the site of the operations;
 - (iii) only use designated recreation areas, campgrounds and walk trails;
 - (iv) ensure vegetation, wildlife and cultural formations (including, but not limited to, fish traps and stone arrangements) are not damaged or disturbed by the operations;
 - (v) ensure the operations do not disrupt other persons and activities.
- b) The Operator shall not, in respect to CALM Act land:
- (i) bring or allow any person to bring animals, unless prior authorisation has been obtained. Dogs and horses are only permitted in designated areas (Regulations 16 and 17);
 - (ii) bring or allow any person to bring a firearm onto CALM Act land unless authorised by special endorsement on the Operator's commercial operations licence;
 - (iii) erect or cause to be erected any facilities or structures (including buildings, tents and caravans) without lawful authority;
 - (iv) impede public access to CALM Act land.

5.17 Vehicles

- a) An Operator bringing a vehicle or vehicles onto CALM Act land, shall ensure:
- (i) such vehicles are appropriately registered under the [Road Traffic \(Vehicles\) Act 2012](#), where all motor vehicles used on CALM Act land are licensed, unless exempted by the Act. All vehicles must fully comply with the [Road Traffic \(Vehicles\) Regulations 2014](#).
 - (ii) that any off road vehicle as defined under the [Control of Vehicles \(Off-road Areas\) Act 1978 \(WA\)](#), is registered with the Department of Transport and has written consent from the Director General to use a vehicle or vehicles defined under the [Control of Vehicles \(Off-road Areas\) Act 1978 \(WA\)](#), on CALM Act land.
 - (iii) that all vehicles are clean of soil, seed and plant matter prior to entering CALM Act land;
 - (iv) such vehicles are only parked in areas designated for that class of vehicle;
 - (v) such vehicles remain on formed roads and existing tracks at all times;
 - (vi) that such vehicles do not enter roads which have been closed by barriers or signs;
 - (vii) the drivers of such vehicles obey all traffic and speed signs.

5.18 General operations

- a) The Operator acknowledges and accepts that department staff may take general photographs of the filming operation for management and record purposes.
- b) If conducting commercial filming while on a commercial tour on CALM Act land, the Operator shall ensure that the Operator being used to conduct the tour is a licensed commercial operator under the CALM Act.

OFFICIAL

- c) The Operator shall comply with all fire restrictions and not light fires other than in portable stoves or department approved fireplaces.
- d) The Operator shall only camp in designated campgrounds, except with the prior written consent of the Director General.
- e) The Operator shall ensure they have made a booking prior to staying at bookable campgrounds.
- f) The Operator shall not climb, stand or sit on any natural formations signed a risk area.
- g) The Operator shall not take footage or images promoting unsafe behaviour, such as those depicting people climbing, descending waterfalls and cascades, or jumping and diving into water holes.
- h) The Operator shall only undertake abseiling and rock climbing activities accompanied by a commercial operator licensed under the CALM Act, and at sites approved by the responsible DBCA regional or district manager.
- i) The Operator shall not bring or allow any person to bring animals or firearms onto CALM Act land without lawful authority.
- j) The Operator shall notify the local DBCA district if sound systems/speakers are to be used during the operations.

6 Special conditions

6.1 Protecting Cultural Heritage: Aboriginal and non-Aboriginal (non-Indigenous)

Cultural heritage consists of natural and social resources, historical features, artefacts, anthropological sites and contemporary cultural practices and features. It includes Aboriginal, non-Aboriginal and other features and is a key resource of WA's nature-based and cultural tourism industry. The department has a social and legislative responsibility to protect these values on lands and waters that it manages.

Aboriginal sites and heritage

The department acknowledges that Aboriginal people have a connection and an ongoing interest in the management of these lands, waters and the natural features, flora and fauna it contains. The department acknowledges the right of Aboriginal people to express and maintain their culture and it both engages and partners with Aboriginal people to help protect, conserve and enhance cultural values across the State.

Sites and landscapes of Aboriginal cultural and heritage value may include (but are not limited to) mythological places, fish traps, artefact sites, middens, scar trees or sites where Aboriginal people have painted or engraved surfaces. Landscape features which possibly contain Aboriginal sites include (but are not limited to) rock outcrops, caves, foreshores and coastal dunes or semi-permanent and permanent waterholes, natural springs and watercourses.

Aboriginal customary activities

Under the CALM Act, Aboriginal people can access CALM Act land to carry out customary activities. Activities are considered to be Aboriginal customary purpose if they involve traditional practices to do with:

- making and eating food
- making and using medicine
- practicing artistic, ceremonial or other cultural activities
- doing other things involved with any of the above, like using water and other natural resources such as ochre, stones and soil for ceremonies.

Aboriginal customary activities may also include hunting with firearms. There is a possibility that you may hear or see hunting in a national park or reserve as part of a customary activity. Operators can contact the relevant [DBCA district office](#) prior to visiting a park to confirm if hunting activities are planned in the area.

No activity is considered customary if it is done for financial gain or reward unless the sale is excepted or the person is authorised or licensed to do so. See the department's website for further information about [Aboriginal customary activities](#).

Identifying Aboriginal Cultural Heritage

Under Aboriginal cultural heritage consists of a mix of tangible and intangible elements that are important to Aboriginal peoples, and are recognised through social, spiritual, historical, scientific or aesthetic values as part of the Aboriginal tradition. Aboriginal cultural heritage can be identified by:

Tangible elements:

- **Places** - an area (an Aboriginal place) a group of areas (a cultural landscape) in which tangible or intangible elements of Aboriginal cultural heritage are present such as significant sites like ceremonial grounds, burial sites, rock art locations, and places of historical or spiritual importance.
- **Objects** - artifacts, tools, weapons, and other physical items that hold cultural significance, including plants, animals and ecological communities.
- **Ancestral Remains** - the bodily remains of a deceased Aboriginal person (Aboriginal ancestral remains), other than remains that are buried in the cemetery where non-Aboriginal persons are also buried.

Intangible elements:

- **Knowledge and Lore** - traditional ecological knowledge, medicinal practices, stories, songs, and languages.
- **Practices and Customs** - ceremonies, rituals, social structures, and kinship systems.
- **Cultural Expressions** - art, music, dance, storytelling, and other forms of artistic expression.

Operators should be aware of the known cultural heritage values in the areas that they operate. Under the [Aboriginal Heritage Act 1972](#), it is an offence to excavate, destroy, damage, conceal or in any other way alter an Aboriginal site without authorisation.

The Department of Planning, Lands and Heritage (DPLH) manages a public database identifying some (not all) Aboriginal cultural heritage site locations. See the [DPLH website](#) for more information.

Historical errors on mapping Aboriginal cultural heritage site boundaries still exist on this database. Information about the Aboriginal heritage for a particular area can best be obtained through consultation with the relevant Aboriginal people such as registered Native Title claimants or Native Title holders.

Protecting Aboriginal Cultural Heritage

Under the CALM Act, the department has a responsibility to protect and conserve the value of the land to the culture and heritage of Aboriginal persons, in particular from any material adverse effect. This includes ensuring the conservation of sites of significance, as well as making allowances for Aboriginal customary activities to be undertaken on CALM Act land. Other broader, more intangible cultural values may be identified within park management plans.

Operators must be aware of these legislative provisions and to keep in mind that some Aboriginal sites (such as rock art sites) may be of particularly high cultural value or sensitivity and may be restricted or subject to specific cultural protocols or entry conditions. Where Traditional Owners have exclusive Native Title possession over lands or waters in Western Australia, Operators must obtain the required approvals from the relevant Native Title claimant group or Native Title prescribed body corporate prior to accessing these areas.

Engaging and working respectfully with Aboriginal people

The department encourages Operators to engage with Traditional Owners on opportunities to collaborate and produce culturally appropriate content on Aboriginal culture and heritage.

Tourism Western Australia and the Western Australian Indigenous Tourism Operators Council (WAITOC) have developed educational resource designed to assist non-Aboriginal tourism operators to engage and work respectfully with Aboriginal people and Aboriginal tourism businesses. This includes the development of four Aboriginal cultural inclusion guides that collectively aim to:

- remove barriers from learning about Aboriginal culture;
- inform the development of best practice protocols for your business so you can work respectfully with your local Aboriginal community;
- highlight the importance of Indigenous Cultural Intellectual Property (ICIP) and how to ensure ICIP is honoured throughout the operation of your business; and
- promote the cultural safety and inclusivity of Aboriginal people in all areas of the tourism industry.

The Aboriginal cultural inclusion guides can be accessed on Tourism WA's website [here](#). The Department encourages filming operators to use these guides to identify opportunities to enhance cultural inclusivity in its operations.

Conditions

- a) The Operator shall not enter into any area occupied or managed by Aboriginal communities without the prior consent from those communities.

- b) The Operator shall receive written approval from the relevant Native Title claimant group or Native Title prescribed body corporate to access areas within CALM Act land that have been identified by Aboriginal people as containing areas of cultural significance or contain registered [Aboriginal Heritage Act 1972](#) sites.
- c) The Operator shall comply with all laws relating to the conduct of the operations including the [Aboriginal Heritage Act 1972](#) and [Aboriginal Heritage Regulations 1974](#).
- d) The Operator acknowledges and accepts that some Aboriginal sites may be of particularly high cultural value or sensitivity and access may be restricted or subject to specific cultural protocols or entry conditions.
- e) The Operator shall ensure that any Aboriginal cultural content or material is developed and filmed only with the knowledge and written consent of the relevant Native Title claimant group; or Native Title prescribed body corporate; or applicable Traditional Owner representative institution; or the relevant Traditional Owner group in the absence of a Native Title claim relevant to the area.
- f) Conditions 6.1 a), b), c), d) and e) do not apply to an Aboriginal Operator who is filming Aboriginal cultural content or material on CALM Act land over which he or she has a Native Title right or interest and/ or is recognised as holding that interest by the Native Title claimant group or prescribed body corporate.
- g) The Operator shall respect the privacy of Aboriginal people whilst undertaking cultural activities, including no filming by the Operator of Aboriginal customary activities (such as fishing, crabbing, hunting) without prior permission.

6.2 Non-Indigenous heritage

There are several different agencies and laws involved in the protection of non-Indigenous cultural heritage sites. For example, the Australian Government is responsible for properties on the National Heritage List and World Heritage List, both of which are protected under the [Environment Protection and Biodiversity and Conservation Act 1999](#).

Sites listed on the State Register of Heritage Places are protected under the [Heritage of Western Australia Act 1990](#), administered by the Heritage Council of Western Australia. Local governments are responsible for compiling an inventory of buildings under the [Heritage of Western Australia Act 1990](#).

Where sites are identified on any of these lists, the department has a responsibility to apply the relevant legislative requirements and management practices to protect the heritage values of these sites. Operators are encouraged to be familiar with any heritage sites located within their area/s of operation, and any legislative and/or management practices in place to protect them.

For more information on State Heritage places, see [the State register and other heritage listings](#).

6.3 Use of remotely piloted aircraft (RPA)

The use of RPA for commercial filming or surveying purposes requires written permission in the form of a licence or lawful authority. Some CALM Act Land is located in No-Fly Zones and requires additional approvals from the controlling authority. Information about the use of RPA, including drones is required as part of the commercial filming application.

Conditions

- a) The Operator shall ensure that the operation of any RPA on or over CALM Act land complies with all relevant State and Federal legislation and regulations, including all [rules, regulations and orders administered by the Civil Aviation Safety Authority \(CASA\)](#).
- b) The Operator shall ensure that any licences or permissions issued to them by CASA in relation to the use of the RPA are provided to the Department on request.

OFFICIAL

- c) The Operator shall notify the relevant Department regional or district manager or his/her delegate prior to operating an RPA, advising them of the day(s) that they intend to fly and provide the exact place(s), proposed time(s) (unless already specified on the licence) and a contact number for the RPA Operator.
- d) The Operator shall immediately notify the relevant Department regional or district manager or their delegate of any alteration to the nature and timing of the RPA activity(s) to be undertaken.
- e) The Operator shall not fly over populous places (consistent with the [Civil Aviation Safety Regulations 1998](#)) which with respect to CALM Act land are defined as recreation sites, picnic/day-use areas, campgrounds, parking areas, trails, beaches, lookouts and gorges.
- f) The Operator must not fly over, or film known or listed Aboriginal cultural sites without the permission of the Traditional Owners.

6.4 *Phytophthora cinnamomi*

The arrival and spread of the root-rot disease *Phytophthora cinnamomi* (also referred to as *Phytophthora dieback*) in WA has been catastrophic for a number of south-west ecosystems.

More than 40 per cent of WA's native plants are susceptible to the disease, particularly those in the south-west. The disease can be spread through the movement of infected wet soil and plant material, usually on vehicle tyres and on walkers' boots and on earthmoving machinery (road construction, timber harvesting and mining). This has been a major problem for a number of industries and its effect on tourism can be seen in places such as Stirling Range National Park, where some walk trails have been closed to reduce the risk of spreading *Phytophthora dieback* to uninfested areas.

Disease Risk Areas are located in a number of parks, forests and reserves. These are significant areas to be protected and are largely uninfested by *Phytophthora dieback*. The Department concentrates available resources to protect these areas from *Phytophthora dieback*. Disease Risk Areas are closed to vehicles to prevent the introduction, spread and intensification of the disease. Travelling in Disease Risk Areas is prohibited without written authority from the Department. Access to Disease Risk Areas during the summer months may be permitted if written permission is provided by the relevant Department district office. Please contact the [local department office](#) for more information.

A standard system of signage has been introduced throughout the State to raise awareness about *Phytophthora dieback* and to assist with land management. This signage system will assist access control, hygiene management and public awareness.



Operators should ensure that clean-down occurs before traversing into areas of a different dieback status. Boots, vehicles, machinery or equipment must be visually inspected to determine they are free from clods of soil or plant material and/or slurry consisting of a mixture of soil, plant material and water. Dust and grime adhering to the sides of vehicles need not be removed before entering uninfested areas.

Visit the department's website for [more information on hygiene management](#) requirements or contact the [local department office](#).

Conditions

- a) Many areas of CALM Act land are infested or at risk of being infested by *Phytophthora cinnamomi*. To avoid spreading the pathogen, boot cleaning stations have been provided in some areas at critical points. The Operator shall use these stations when these stations are available.
- b) The Operator must not access Disease Risk Areas without written lawful authority.
- c) If access is granted to an Operator to enter a Disease Risk Area, the Operator shall:
 - (i) do all things necessary to minimise the risk of soil and plant tissue transportation from areas infested with *Phytophthora cinnamomi* to unknown or uninfested areas;
 - (ii) ensure that all vehicles (including underside of the vehicle, body and tyres) and equipment (including footwear) are thoroughly cleaned of soil, seed, weed and plant matter before entering and departing Disease Risk Area;
 - (iii) use chlorinated water, if water is being used to clean vehicles and equipment including personal footwear;
 - (iv) consult the local Department office regarding the inspection of vehicles and the location where they can clean down vehicles and equipment.

6.5 Declared rare flora and fauna

At all times, all native flora and fauna throughout WA are protected under the BC Act, unless declared otherwise by the Minister. This includes all living plants, or parts of plants (including seeds or spores), and all or part of any animal living or dead (including eggs, carcass, skin, plumage, shell and bones).

It is an offence against the BC Act to take protected flora or fauna without lawful authority. Operators should be mindful of this law whenever encountering native flora and fauna anywhere in WA. Many species of declared rare flora remain in pockets of uncleared reserves of native vegetation on agricultural land and on uncleared road and rail reserves. Declared rare flora and fauna also occur on CALM Act land. While the location of a threatened species is not generally disclosed, sometimes areas that contain threatened flora are delimited by pairs of yellow 'L' shaped markers.

Conditions

- a) The Operator shall not take ('take' having the same meaning as provided by the BC Act) any protected flora or fauna whether alive or dead or any non-living objects such as shells, driftwood, sand, rocks etc. from any CALM Act land without lawful authority from the Director General.
- b) The Operator shall not disturb flora that occurs between rare flora designated markers.
- c) The Operator, nor the Operator's employees, agents, contractors or passengers, shall not engage in the feeding of fauna on CALM Act land without lawful authority.

6.6 Shorebirds and seabirds

Shorebirds, also known as 'waders', are a diverse group of birds mostly associated with wetland and coastal habitats where they wade in shallow water and feed along the shore. This group includes plovers, sandpipers, stints, curlews, knots, godwits and oystercatchers.

Seabirds include terns such as roseate, caspian, crested and fairy terns that often congregate in large flocks along the coastline and alongside shorebirds. They differ from shorebirds because they forage at sea, feed upon fish and squid, only coming ashore to roost and nest.

Many species are experiencing significant population declines, causing them to be recognised as threatened species. Operators should avoid and not disturb shorebird and seabird nesting/roosting sites during the operations. Please contact the local department office for more information, see Section 18 for contact details.

Conditions

- a) Should any nests of roosting seabirds or shorebirds be encountered, the Operator shall ensure it maintains a minimum distance of 25 metres from such nests and that they depart the area as soon as is practicable with minimum disturbance.

6.7 Marine Fauna

Marine fauna means any species of whale, dolphin or killer whale, dugong, seal, sea turtle, whale shark or manta ray. Interactions with marine fauna are managed under the [BC Regulations](#). The BC Act prohibits the disturbance of fauna (s153(1)) and the feeding of fauna (s155) unless the person has lawful authority, while the [BC Regulations](#) outline a set of rules for interactions with marine fauna by all people, vessels, aircraft, helicopters and aerial devices in WA State waters and lands. These rules are designed to protect marine fauna from impacts from human activities and to reduce safety risks to the public. Operators must comply with separation distances as prescribed by the [BC Regulations](#).

Pinnipeds including Australian sea lions and long nosed fur seals are protective of their young and show increased aggression during breeding and pupping seasons and may pose a risk of bites. To support animal and human safety and welfare, people must stay at least 10 metres from sea lions on land, 50 metres when in the water and 100m in a vessel at all times. It is important not to approach, even if you think the animal

is injured as it may scare the animal into the water, increase their stress levels and decrease their chance of survival if injured.

It is illegal to harass and disturb marine mammals. If you think an animal requires assistance, contact the Wildcare Helpline on phone (08) 9474 9055 and do not interact with the animal.

Conditions

- a) The Operator shall be aware of and comply with separation distances for marine fauna as prescribed under the [BC Regulations](#).
- b) The Operator shall adhere to the [Turtle Watching Code of Conduct](#) for any operations with turtles.

6.8 Partial or full closure of parks and reserves

Many parts of CALM Act land may, at some time of the year, be subject to full or partial closure for a variety of reasons. Closures are in place either to protect conservation values of an area or for the safety and protection of visitors.

Areas, roads and tracks within a park may be subject to seasonal closure due to environmental factors such as weather conditions (flooding or fire) or to limit the spread of disease such as *Phytophthora cinnamomi*. For northern parks, closure mainly occurs during the wet months, usually December to April and in parks in the southern parts of the State, closure can occur anytime of the year. Some parks such as Purnululu National Park have set closing and opening dates – the park closes 31 December and reopens on 1 April each year – while others are subject to park conditions. Tracks and roads may be closed at any time of the year to allow for management regimes such as road works or fire control.

Sites within parks may also be closed at various times of the year to protect animal species during vulnerable periods such as nesting, or to enable necessary maintenance or management works. Please comply with signage on-site and respect and appreciate such spectacles from a distance. Opening and closing dates of restricted breeding sites within a park will vary from year to year depending upon the animals' behaviour.

Conditions

- a) The Operator acknowledges and accepts the filming authority does not guarantee the Operator access to any area of CALM Act Land and the Director General may, at any time and from time to time, close or restrict access to any area of CALM Act Land without prior notice to the Operator.

6.9 Leave No Trace

[Leave No Trace](#) is an internationally recognised program that promotes responsible outdoor travel and recreation. The department supports the development of a national minimal impact ethos and is working with [Leave No Trace Australia](#) to facilitate a best practice skills and ethics program. [Leave No Trace Australia](#) is a national non-profit organisation dedicated to promoting and inspiring responsible outdoor travel and recreation through education, research and partnerships.

Conditions

- a) Operators shall minimise their ecological footprint by adopting the seven principles of *Leave No Trace* and educating their filming party on minimal impact practices. **The seven principles of *Leave No Trace* are as follows:**
 1. Plan ahead and prepare
 2. Travel and camp on durable surfaces
 3. Dispose of waste properly
 4. Leave what you find
 5. Minimise campfire impacts

6. Respect wildlife
7. Be considerate of your hosts and other visitors.

6.10 Introduced plants and animals

Weeds

A weed is a plant species that interferes with the conservation of the natural environment and biodiversity values; they can out-compete native vegetation and destroy habitat for native animals. Some plants that are now weeds were deliberately introduced for pastures, to control erosion, or as garden ornamentals.

Vehicles and pedestrians can spread weeds from one site to another, most commonly by transporting prickly seeds that attach to vehicles, clothing or camping gear. To reduce the spread of weeds, Operators should restrict activities to formalised roads, paths and designated camping areas. Prior to entering a park, Operators and crew members should check that seeds have not collected on vehicles, camping equipment and clothing, and remove the plant material found.

Cane Toads

Cane toads first crossed the Northern Territory border into WA's Kimberley region in 2009 and continue to move westward at approximately 50km per year. Due to their significant impact on native predators and ability to adapt to the Australian landscape, the Government of Western Australia developed a [Cane toad strategy](#) for managing the pest species.

Operators are encouraged to check vehicles and equipment for cane toads to prevent the spread of the invasive species. Operators and visitors should report any sightings to the Cane Toad Hotline on [1800 449 453](tel:1800449453) and send a photo of the suspected cane toad by SMS to [0400 693 807](tel:0400693807) or by email to canetoads@dbca.wa.gov.au.

6.11 Crocodiles

Operators working in the north-west of the state must be mindful of crocodiles and in particular changes in crocodile density, distribution and behaviour. Crocodiles inhabit a wide variety of inland and coastal waterways and water bodies, from the Kimberley region south to Onslow. Crocodiles have been sighted as far south as Gnaraloo Bay, south of Coral Bay. Crocodiles inhabit both fresh and saltwater, including estuaries, tidal rivers, river pools and the waters around offshore islands. Operators should assume all water bodies in the north-west of the State may contain dangerous crocodiles.

Conditions

- a) The Operator shall ensure its vessel/s, including tenders, are appropriate for the area of operation and maintain safe distance from crocodiles.
- b) The Operator shall advise its employees and contractors of the following:
 - (i) Assume all water bodies in northern Australia contain dangerous crocodiles. If in doubt do not swim, canoe or use small boats where crocodiles may live.
 - (ii) Always read and obey warning signs. Some locations where crocodiles live may have warning signs, but most do not. Do not assume the absence of signs means it is safe to stand near or enter the water.
 - (iii) Camp at least two metres above the high-water mark and at least 50 metres from the water's edge.
 - (iv) Do not paddle, clean fish, prepare food or wash at the water's edge or adjacent to sloping banks.
 - (v) Do not dispose of food scraps or fish offal in the water, around campsites or boat ramps.
 - (vi) Do not feed, harass, encourage or try to interact with crocodiles – even small ones. This is extremely dangerous and is against the law.

- (vii) Be vigilant when launching or retrieving boats. Activity and noise can attract a crocodile's attention.
 - (viii) Crocodiles can attack and take people from boats. The smaller the boat the greater the risk.
 - (ix) Do not hang arms, legs or any part of your body out of or lean over the edge of a boat when on the water.
 - (x) Do not lean over the edge of a boat or enter the water to retrieve snagged lures.
- c) If an Operator encounters or observes any unusual crocodile behaviour, the Operator shall report it to the relevant district office as soon as possible.

For further information, please refer to the [department's website](#).

6.12 Dingoes and wild dogs

Operators are advised that dingoes live throughout regional WA and are common in the Mid West, Pilbara and Kimberley regions. Dingoes are wild animals and where they have become commensurate in the consumption of human foods may harass and may even try to intimidate. Fines for feeding dingoes apply.

Operators are advised to follow the following protocols:

- never feed dingoes and wild dogs
- never leave children unsupervised
- never offer food to dingoes to photograph or film them
- lock up food stores and cool boxes and keep them in a vehicle
- pack away food scraps and rubbish and secure in your vehicle.
- put away shoes, clothing, toiletries and camping equipment.

If you feel threatened by a dingo:

- stand up at your full height
- face the dingo
- fold your arms and keep eye contact
- calmly back away
- if in pairs, stand back to back
- confidently call for help
- do not wave your arms.

Conditions

- a) The Operator shall report any negative encounters with dingoes or wild dogs within 48 hours to the nearest ranger or district office.

6.13 Emergencies

Cyclones and flooding

The wet season in the northern half of WA (this includes the Kimberley, Pilbara and Midwest regions) usually takes place between November and April. Typical weather conditions during the wet season include heavy, short rainfall in the late afternoons and evenings, higher humidity during the day and an increased risk of tropical cyclones. Severe cyclones can cause widespread damage, injury and loss of life.

If a cyclone is approaching and an 'Advice Alert' is issued, the Department will assess which campgrounds/parks/public moorings are to be closed and will issue a media release to media outlets and organise to evacuate these areas.

If campgrounds/parks/public moorings are to be closed, the department will place a notice on the [Park Alerts system](#).

Operators will be required to evacuate any campgrounds/parks/public mooring when instructed to do so by departmental staff or any emergency services personnel, or when DFES issue a cyclone 'Watch and Act Alert'.

Cyclone emergency contact information

During a cyclone emergency you can find community alert information via:

- ABC local radio and other local media. A list of ABC frequencies around the State can be found on the [ABC's website](#)
- DFES [Emergency website alerts](#) or call the DFES public recorded information line on [13 DFES](#) (13 3337)
- [Bureau of Meteorology \(BOM\)](#) cyclone advice or contact BOM's cyclone warning advice line on [1300 659 210](#)
- Police, fire and ambulance on [000](#)
- State Emergency Services (SES) on [132 500](#)
- [Main Roads travel map and online alerts](#) or by calling [138 138](#)

Travelling during a flood

Flooding can occur in any part of WA at any time, although in the past decade it has occurred mostly in the north-west of the state due to rainfall associated with cyclones. For more information please visit [Emergency WA](#) website.

Prescribed burning operations

To lessen the threat of bushfires and make them easier and safer to control when they do occur, the department has successfully implemented a fire management strategy that involves an annual prescribed burn program designed to create a mosaic of burned and unburned areas.

The department's [Burn Options Program](#) can be viewed online. As these are indicative plans only, they are subject to change depending on weather factors and changing works program priorities. Operators are encouraged to check [burns currently being conducted](#) on a regular basis or [contact the relevant department regional office](#) for more information about a specific area.

Bushfires

The following resources may assist Operators to be better informed about bushfires on CALM Act land. Please note that bushfires are unpredictable and may still be active, even if not shown on any of the following resources.

Operators should listen regularly to [your ABC local radio](#) for updates on fires.

If Operators observe what may look like a bushfire while travelling they should contact the relevant department office to obtain the latest information on the fire, see section 18 for contact details. The latest information relating to bushfires can be viewed at [Emergency WA](#).

During the fire season Operators should use the following websites as a guide to see whether there are any fires that may affect your travel plans:

- [Landgate Firewatch](#)
- [GeoScience Australia Sentinel](#)
- [Emergency WA](#) provides the latest information about bushfires and other emergencies.

7 Kimberley Region

7.1 General conditions for the Kimberley Region

Saltwater Crocodiles

Operators filming in the Kimberley Region must be mindful of saltwater crocodiles. No waters in the Kimberley Region are guaranteed to be free of crocodiles, including freshwater creeks and waterfalls. For further information, visit the [department's website](#).

7.2 Bunuba Country

The below parks are jointly managed by the department and Traditional Owners represented by the Bunuba Dawangarri Aboriginal Corporation (BDAC).

Bunuba Country includes: **Bandilngan (Windjana Gorge) National Park; Dimalurru (Tunnel Creek) National Park ; Devonian Reef Conservation Park; Brooking Gorge Conservation Park; Danggu Geikie Gorge National Park; Danggu Geikie Gorge Conservation Park; and part of Miluwindi Conservation Park.** These parks contain areas that are culturally sensitive to local Aboriginal people and Aboriginal sites listed as protected under the *Aboriginal Heritage Act 1972*.

See section 6.1 of this handbook for information and conditions related to filming at Aboriginal cultural sites or filming of cultural material.

Conditions

- (a) The Operator shall contact the DBCA Ranger on duty, via telephone or in person, at least 48 hours prior to commencing filming activities in each park.

<u>Park/s</u>	<u>Telephone</u>
Bandilngan (Windjana Gorge) NP and Dimalurru (Tunnel Creek) NP	(08) 9191 7076
Danggu Geikie Gorge NP	(08) 9191 5112

- (b) The Operator shall ensure that filming activities in Danggu Geikie Gorge National Park do not disturb the Danggu Geikie Gorge boat tours whilst in operation. If using vessels other than the Danggu Geikie Gorge cruise vessel within Danggu Geikie Gorge National Park, the Operator shall contact the Ranger on duty to discuss boat launching and filming schedules.
- (c) The Operator acknowledges and accepts that RPA (drones) are not permitted inside the cave area of Dimalurru (Tunnel Creek) National Park.

7.3 North Kimberley Marine Park

The North Kimberley Marine Park contains more than 1000 islands that provide intertidal and subtidal habitats. The marine park's coral reefs contain a diverse range of species, including protected marine mammals such as dugongs, turtles and sawfish. There is a successful and historical pearling industry within the marine park due to the warm, tropical waters that provide optimal conditions for the production of pearls.

Conditions

- (a) The Operator shall contact the East Kimberley Marine Park Coordinator on phone (08) 9168 4200 at least 48 hours prior to commencing filming activities and on arrival at the park.
- (b) The Operator shall not access the beach between the northern extent at coordinates 13°48'11.88"S, 126°45'16.10"E and southern extent coordinates 13°48'50.92"S, 126°45'36.76"E in the Talbot Bay area.

- (c) The Operator shall not anchor within the King George Falls area beyond 14° 02' 20.42"S, 127° 19' 27.39"E.
- (d) The Operator shall not install any climbing aids including ropes to rocks within the Falls area, even temporarily, and shall not walk up to the top of the Falls.

7.4 Purnululu National Park

Conditions

- (a) The Operator shall contact the Purnululu National Park Senior Ranger by phoning the Purnululu Visitor Centre on (08) 9168 7300 or the East Kimberley District office on (08) 9168 4200 at least 48 hours prior to commencing filming activities and on arrival at the park.
- (b) The Operator shall contact Helispirit on phone (08) 9168 1101 prior to using RPA and advise on the location/s and time/s it plans to operate RPA. This is also to be confirmed with the Purnululu National Park Senior Ranger.
- (c) The Operator acknowledges and accepts that the use of RPA for commercial filming may be restricted at certain times to mitigate risks to visitor safety and aviation operations. This may include during peak tourist periods when there are consistent aviation operations throughout the reserve.

7.5 Wunambal Gaambera Country

Wunambal Gaambera Country includes Mitchell River National Park which contains areas that are culturally sensitive to Aboriginal Traditional Owners. Operators and visitors are required to obtain an [Uunguu Visitor Pass](#) from [Wunambal Gaambera Aboriginal Corporation](#) prior to arrival on Country.

See section 6.1 of this handbook for information and conditions related to filming at Aboriginal cultural sites or filming of cultural material.

Mitchell River National Park

Conditions

- (a) The Operator shall obtain an Uunguu Visitor Pass from the Wunambal Gaambera Aboriginal Corporation (WGAC) before commencing operations within the Mitchell River National Park.
- (b) The Operator shall contact the Mitchell River National Park Senior Ranger by phoning the Kimberley Region Ranger's Station on (08) 9161 4172 or the East Kimberley District office on (08) 9168 4200 at least 48 hours prior to commencing filming activities and on arrival to the park.
- (c) The Operator shall contact Helispirit on phone (08) 9168 1101 prior to using RPA and advise on the location/s and time/s you plan to operate RPA. This is to be confirmed with the Mitchell River National Park Senior Ranger who can be contacted on phone (08) 9161 4172 or (08) 9168 4200.
- (d) The Operator shall only camp in the designated camping area adjacent to the ranger station except with written approval of the Director General or Delegate.
- (e) The Operator shall not access the plunge pool and/or the base of the Mitchell River Falls.

7.6 Dambeemangarddee Country

The Lalang-gaddam Marine Park is located within Dambeemangarddee people's Native Title determination area. In 2022, the Maiyalam Marine Park was gazetted and, as part of the announcement, the four jointly managed Dambeemangarddee (previously spelt Dambimangari) marine parks (North Lalang-garram Marine Park, Lalang-garram/ Horizontal Falls Marine Park, Lalang-garram/ Camden Sound Marine Park and the Maiyalum Marine Park) were amalgamated under one management plan and collectively named the Lalang-gaddam Marine Park. The marine park is jointly managed by Traditional Owners and DBCA.

See section 6.1 of this handbook for information and conditions related to filming at Aboriginal cultural sites or filming of cultural material.

Conditions

- (a) The Operator shall not, without lawful authority, access or use any part of the Prince Regent National Park other than the existing walk trail areas at Cascade Falls and Careening Bay.
- (b) If using a helicopter to access Prince Regent National Park, the Operator shall only land where safe to do so within the area bounded by GDA94 points: 125.30352, -15.62023 thence south-west to 125.30230, -15.62139 thence south-east to 125.30316, -15.62217 thence south-west to 125.29998, -15.62547 thence south-east to 125.30270, -15.62789 thence north-east to 125.30753, -15.62273 thence to 125.30352, -15.62023 and excluding the Cascade Basin.
- (c) The Operator acknowledges and accepts the use of RPA is not permitted within seven kilometres of Garaangaddim (Horizontal Falls) without lawful authority from the Department. Please refer to Figure 7.6.1 below.

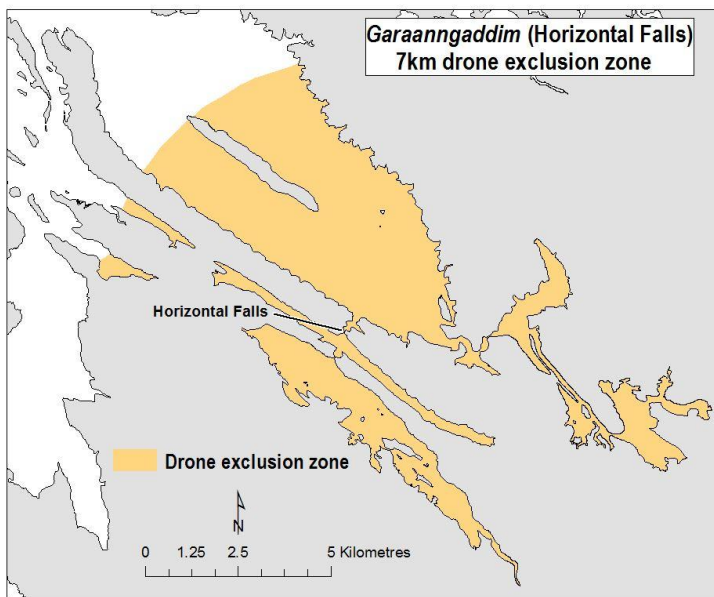


Figure 7.6.1 Drone exclusion zone for Lalang-gaddam Marine Park and Garaangaddim (Horizontal Falls).

7.7 Rowley Shoals Marine Park

The Rowley Shoals are a chain of three coral atolls located approximately 300km west-north-west of Broome. The Department manages the two southern atolls, Clerke and Imperiuese Reefs. The northern most atoll is Mermaid Reef which is part of Mermaid Reef Australian Marine Park. It is managed by the Commonwealth Government Department of the Environment, with on-ground assistance from Parks and Wildlife Service.

Conditions

- (a) The Operator shall not camp or light fires on the islands of Rowley Shoals Marine Park.
- (b) The Operator shall not feed the fish or use fish attracting devices for the purpose of commercial filming.
- (c) The Operator shall not walk on coral reefs or undertake any activity that will damage the coral reefs.
- (d) The Operator shall take all reasonable care not to disturb fauna. Should red tailed tropic birds be encountered on Bedwell Island, the Operator shall maintain a minimum distance of 10 metres from any chicks, fledglings and adult birds either resting or nesting on the island.
- (e) The Operator acknowledges and accepts group sizes are limited to six persons when accessing Bedwell Island.

8 Pilbara Region

8.1 Saltwater Crocodiles

Operators filming in the Pilbara Region must be mindful of crocodiles that inhabit the coastal zone (mangrove creeks, coastal rivers and inlets) from the Kimberley Region south to Exmouth and Onslow. Please contact the Pilbara Region office or the relevant district offices for more information about where saltwater crocodile are known to inhabit or may inhabit. Any sightings south of the De Grey River should be reported to the Pilbara region office in Karratha on phone (08) 9182 2000.

8.2 Cape Range National Park and Nyinggulu (Ningaloo) Coastal Reserves

Cape Range National Park and Nyinggulu (Ningaloo) Coastal Reserves are jointly managed by DBCA and Traditional Owners represented by the Nganhurra Thanardi Garrbu Aboriginal Corporation (NTGAC).

See section 6.1 of this handbook for information and conditions related to filming at Aboriginal cultural sites or filming of cultural material.

Conditions

- (a) The Operator shall maintain a separation distance of 100m from the mouths and edges of gorge rims unless on designated walk trails.
- (b) The Operator shall not fly RPA (drones) in Yardie Creek Gorge during the scheduled boat tour times, which can be found via tour signage at the location.

8.3 Karijini National Park

Banjima, Yinhawangka and Eastern Guruma People

All Indigenous knowledge, artefacts and cultural materials displayed, and stories told in the Karijini Visitor Centre, are the intellectual property of the Traditional Owners. These are subject to international copyright laws and as such may not be reproduced or copied without the written consent of the Karijini Park Council.

See section 6.1 of this handbook for information and conditions related to filming at Aboriginal cultural sites or filming of cultural material.

Environmental hazards

The Operator must not enter gorges during wet weather, due to the risk of flash flooding. In the event of significant rainfall all people should immediately leave the gorges.

Please contact the Karijini National Park Senior Ranger on phone (08) 9189 8147 to gain more information about flight restrictions and walk trail classifications in Karijini National Park.

Conditions

- (a) The Operator shall contact the Karijini Senior Ranger via phone (08) 9189 8147 or email karijini@dbca.wa.gov.au to provide details of their visit no less than 7 working days prior to commencing commercial filming within Karijini National Park.
- (b) The Operator shall ensure that RPA (drone) pilot identification signage is in place whilst using drones at designated recreational sites within Karijini National Park. The Karijini Senior Ranger will provide this signage to the Operator upon request when they arrive.

9 Midwest Region

Department supervision for filming in marine areas

Department supervision must be organised seven days prior to the proposed commercial filming operation in marine areas. The requirement for supervision is stipulated in the conditions for a commercial filming operation in the following reserves:

- Monkey Mia Conservation Park
- Shark Bay Marine Park
- Hamelin Pool Marine Nature Reserve
- Jurien Bay Marine Park
- Turquoise Coast Island Nature Reserves

Department supervision for commercial filming may also be required within the Houtman Abrolhos Islands National Park and should be confirmed and organised seven days prior to the proposed commercial filming operation. Please contact the relevant DBCA district office for more information about organising Department supervision. Contact details can be found in section 18.

9.1 Kalbarri National Park

Conditions

- (a) The Operator shall not climb or stand on top of Nature's Window or on cliff overhangs.
- (b) The Operator shall not take footage or images promoting unsafe behaviour, such as those depicting people climbing or standing on Natures Window or on cliff overhangs.

9.2 Nambung National Park

Conditions

- (a) The Operator shall ensure that all park rules are followed including not climbing on natural formations or pinnacles.
- (b) The Operator shall not film any person climbing, standing or sitting on any natural formation or pinnacle.
- (c) The Operator shall only access the Pinnacles Loop track with vehicles no greater than 7 metres length by 2.5 metres width.
- (d) The Operator shall not drive or park their vehicle outside of the marked alignment of the Pinnacles Loop Track.
- (e) The Operator shall ensure all vehicles are clean on entry to the park and compliant with Dieback hygiene control measures.

9.3 Monkey Mia Conservation Park

Conditions

- (a) The Operator shall only access the conservation park with Department staff supervision.
- (b) The Operator shall not access the Monkey Mia jetty without written authorisation from the Shire of Shark Bay.
- (c) The Operator shall not film the Monkey Mia Dolphin Experience using remotely piloted aircraft.

9.4 Hamelin Pool Marine Nature Reserve

Conditions

- (a) The Operator shall obtain approval from a Delegate to access the shoreline or undertake in-water filming in Hamelin Pool Marine Nature Reserve.

- (b) The Operator acknowledges and accepts walking, swimming, diving, snorkelling and boating is not permitted over stromatolites, or within 300m of the shore in the Hamelin Pool Marine Nature Reserve.
- (c) The Operator must book and receive a briefing from the Departments Shark Bay District before conducting activities around stromatolites and bacterial mats of the reserve.
- (d) The Operator shall only undertake stromatolite filming at the Flagpole Landing boardwalk - accessible from the historic Hamelin Pool Telegraph Station.
- (e) The Operator shall only undertake in-water filming with Department staff supervision.
- (f) The Operator shall not walk, swim, dive, snorkel or boat over stromatolites or microbial mats, or within 300m of the shore.

9.5 Shark Bay Marine Park

Conditions

- (a) The Operator shall only undertake filming of marine wildlife either from a vessel or in-water with Department staff supervision.

9.6 Jurien Bay Marine Park and Turquoise Coast Island Nature Reserves

Conditions

- (a) The Operator shall only undertake filming of marine wildlife either from a vessel or in-water with Department staff supervision.
- (b) The Operator shall not conduct motorised or non-motorised vessel operations (including kayaking, vessel tours and landing by vessels or small craft) on or within 100 metres of the following islands, which are sea lion haul out and breeding islands: Edwards; Target; Buller; South Cervantes; Middle Cervantes; South Ronsard Rocks; North Ronsard Rocks; Outer Rocks; North Essex Rocks; Sandland; North Fisherman; South-West Beagle; North West Beagle; and East Beagle islands.

9.7 Houtman Abrolhos Islands National Park

Houtman Abrolhos Islands National Park (HIANP) covers all unoccupied islands and parts of islands not occupied by commercial fishers and aquaculture operators. Occupied lands and the waters of the Abrolhos are managed by the Department of Primary Industries and Regional Development (DPIRD). For approval to conduct commercial filming activities in areas managed by DPIRD contact the Fisheries office in Geraldton on phone (08) 9920 8400. Prior to entering the waters of the Abrolhos Islands Fish Habitat Protection Area, vessel masters must notify DPIRD. The notification form and more information can be found on the [Fisheries website](#).

Historic shipwrecks and associated land sites at the Abrolhos are protected under State and Commonwealth law. Beacon Island is a maritime archaeological site protected under the *Maritime Archaeology Act 1973 (WA)*, and part of the *Batavia shipwreck and survivor camps 1629* National Heritage site that encompasses the Batavia wreck site and several island sites in the Wallabi Group.

The Abrolhos Islands form the largest and most species rich seabird breeding area in the eastern Indian Ocean. Most of the islands support nesting and breeding bird colonies that are easily disturbed. Almost all areas of soft sand will contain the burrows of seabirds that will collapse easily. Stressed birds that desert their nests leave eggs and chicks unprotected.

Conditions

- (a) The Operator shall notify the DBCA Geraldton office at least 2 weeks in advance of filming activities via geraldtonenquiries@dbca.wa.gov.au.
- (b) Before disembarking on islands, the Operator shall ensure that clothes, shoes and equipment are free of soil, seeds, insects and other living organisms such as house mice and Asian house geckos.

- (c) The Operator shall ensure that they stay on designated pathways or on coral shingle and hard surface areas around the perimeter of the island and that they do not access the interior of the island for their own safety and to avoid damaging sensitive habitat and heritage sites.
- (d) The Operator shall only access Beacon Island by the jetty. Vessels are permitted to berth on the jetty for a maximum of 2 hours.
- (e) The Operator shall move away from fauna if they become disturbed or agitated.
- (f) The Operator shall avoid visiting seabird nesting colonies around sunrise and sunset when birds are most active.
- (g) The Operator shall ensure that seabirds are not disturbed and that if any nests of roosting birds are encountered, the Operator shall maintain a minimum distance of 25 metres from such nests.
- (h) The Operator shall minimise the use of lights at night, including on vessels, to minimise impact on night-flying seabirds.
- (i) The Operator shall minimise engine noise near seabird colonies.
- (j) The Operator shall not use remotely piloted aircraft in proximity to seabird colonies.
- (k) The Operator shall not enter mangrove areas.
- (l) The Operator shall brief employees, agents and contractors prior to landing that there is to be no disturbance, fossicking, metal detecting or removal of materials of any kind from the islands and that failure to observe this may result in prosecution.
- (m) The Operator shall report any heritage relics to the Western Australian Museum, consistent with requirements under legislation.

10 Goldfields Region

See section 6.1 of this handbook for information and conditions related to filming at Aboriginal cultural sites or filming of cultural material.

11 Wheatbelt Region

See section 6.1 of this handbook for information and conditions related to filming at Aboriginal cultural sites or filming of cultural material.

11.1 General conditions for the Wheatbelt Region

Conditions

- (a) The Operator shall not disturb or target the Black-flanked rock wallaby for commercial filming operations without prior approval from DBCA Wheatbelt region.
- (b) The Operator shall not disturb or target numbats for commercial filming operations without prior approval from DBCA Wheatbelt region.
- (c) The Operator shall contact the relevant DBCA Wheatbelt Region office to check the status of wild dog control before commencing commercial filming operations.

11.2 Barna Mia Nocturnal Wildlife experience

The Barna Mia experience is based around a booking system. Any approved filming operation will be carried out in a way that will not impact the experience of visitors to Barna Mia.

Conditions

- (a) The Operator shall only access the Barna Mia facility under the supervision of Department staff.

- (b) The Operator acknowledges and accepts night filming must only be carried out using a red light with no flash photography allowed.

12 Swan Region

12.1 Walyunga National Park

Walyunga National Park contains areas of significant Aboriginal heritage south of the Walyunga recreation site and car park. Please contact the DBCA Perth Hills District office for further details.

See section 6.1 of this handbook for information and conditions related to filming at Aboriginal cultural sites or filming of cultural material.

12.2 Serpentine National Park

Serpentine National Park often fills to capacity during peak periods. Once at capacity, it is then closed to new visitors. The park may also be closed during extreme weather conditions. Opening hours are Monday to Sunday, 8:30am-5.00pm.

Conditions

- (a) The Operator shall not undertake a commercial filming operation that promotes swimming or diving in the Serpentine Falls pool area.

12.3 Midgegooroo National Park

Boulder Rock in Midgegooroo National Park contains areas of significant Aboriginal heritage. See section 6.1 of this handbook for information and conditions related to filming at Aboriginal cultural sites or filming of cultural material.

Please contact the DBCA Perth Hills District for further information. Contact details can be found in section 18.

12.4 Lane Poole Reserve

Conditions

- (a) The Operator shall not enter or traverse the culvert pipes beneath Bob's Crossing at any time.

12.5 Beelu National Park

Conditions

- (a) The Operator shall not access Statham's Quarry without making a booking through the DBCA Perth Hills District.
- (b) The Operator shall not climb or abseil on Statham's Quarry without the involvement of qualified rock climbers and the use of appropriate safety equipment.

12.6 Greenmount National Park

Conditions

- (a) The Operator shall not access Boya Quarry without making a booking through the Perth Hills District.
- (b) The Operator shall not climb or abseil on Boya Quarry without the involvement of qualified rock climbers and the use of appropriate safety equipment.

12.7 Penguin Island Conservation Park

The Operator requires approval from a Delegate to access restricted areas which includes all areas except the boardwalks and beaches.

Conditions

- (a) The Operator shall only access Penguin Island through the Penguin Island ferry service.

- (b) The Operator shall keep to designated walkways, board walks and beaches unless otherwise approved by the Department.

12.8 Shoalwater Islands Marine Park

Conditions

- (a) The Operator shall not fly Remotely Piloted Aircraft (RPA) over or within 50m of the boundary of any island (including Penguin Island) or rocky outcrop within the Shoalwater Islands Marine Park.

12.9 Yanchep National Park

Yanchep National Park is in a restricted fly zone (RA2) and requires further approvals to operate RPA from the controlling authority RAAF Pearce. To apply for approval, please complete and submit the [RAAF Pearce RPAS Coordination Form](#) and email to pea.airopscoord@defence.gov.au.

Conditions

- (a) The Operator shall not fly Remotely Piloted Aircraft (RPA) unless written approval is granted by the controlling authority and shall provide this authority to the Department on request.
- (b) The Operator shall only enter caves within the park while accompanied by a Department nominated cave guide.

12.10 Yalgorup National Park, Len Howard Conservation Park and Nature Reserves within the Peel Yalgorup Wetlands Area

Conditions

- (a) The Operator shall not access the shoreline or undertake in-water filming in Yalgorup National Park unless approved by the Department.
- (b) The Operator shall only undertake thrombolite filming at the Lake Clifton boardwalk, accessible from Mt John Road.
- (c) The Operator shall only undertake in-water filming in Lake Clifton with Department staff supervision.
- (d) The Operator shall ensure RPA used for filming remain more than 100m from feeding shorebirds.

12.11 Rockingham Lakes Regional Park

Conditions

- a) The Operator acknowledges and accepts that access to Lake Walyungup, including the approved RLRP drone flying area, may be restricted during times of wet weather and inundation to protect the lake and riparian zone.

13 South West Region

The South West Region comprises the Wellington and Blackwood districts. Contact details for the South West Region in section 18.

14 Warren Region

The Warren Region comprises the Frankland and Donnelly districts. Contact details for the Warren Region can be found in section 18.

15 South Coast Region

15.1 Cape Arid National Park

Conditions

- (a) The Operator must not access the wilderness zone without approval from a Delegate of the Department.

15.2 Nuytsland Nature Reserve

Conditions

- (a) The Operator shall not access closed caves without Department staff supervision.
- (b) The Operator acknowledges and accepts cave access is only permitted under lawful authority issued by the Department.
- (c) The Operator shall ensure film product of the caves:
 - (i) depicts the caves uniqueness, geology, fragility, flora and fauna;
 - (ii) does not promote the general public accessing or entering a cave without appropriate permission from the Department.

15.3 Cape Le Grand National Park

Conditions

- (a) The Operator shall not undertake a commercial filming operation that promotes feeding or handling of wildlife.
- (b) The Operator shall ensure the film product does not depict feeding or petting of kangaroos and a minimum separation distance of five meters is maintained between the Operator and kangaroos while filming at Lucky Bay.
- (c) The Operator shall not take footage or images promoting unsafe behaviour, such as those depicting people on or near Frenchman's Peak, cliff edges and granite overhangs.

16 Regional Parks

The department manages a number of regional parks which are urban havens managed to preserve and restore valuable ecosystems and cultural heritage while encouraging a range of sustainable nature-based recreation activities. Contact details for the Regional Parks Unit are in section 18.

17 Bibbulmun Track, Cape to Cape Track and Munda Biddi Trail

Conditions

- (a) The Operator shall access the Bibbulmun and Cape to Cape tracks by foot only and the Munda Biddi Trail either by foot and non-motorised bicycle, except where the track/trail crosses public access roads, the locations of which are mostly marked with red car symbols on maps and guidebooks.
- (b) The Operator shall ensure that all vehicles remain on formed roads and existing tracks.
- (c) The Operator shall abide by all track closure signage, and any instructions from departmental and other emergency staff.
- (d) The Operator shall ensure that maximum group numbers do not exceed 17 persons for day trips on the track or trail and for overnight stays at track campsites.
- (e) The Operator shall only use portable fuel stoves for cooking and not use wood fires at campsites along the track or trail.

18 Contact Details

Department of Biodiversity, Conservation and Attractions Contacts

Nature-based Tourism Division

Address: 17 Dick Perry Avenue, Kensington

Phone: (08) 9219 8384 or (08) 9219 9000

Email: licensing@dbca.wa.gov.au

Email: park.passes@dbca.wa.gov.au

Recreation and Trails Unit

Phone: (08) 9219 8265

Email: recreationandtrails@dbca.wa.gov.au

Website: www.parks.dpaw.wa.gov.au/know/trails

Region and District Offices

Kimberley Region	East Kimberley District (Kununurra) Address: Lot 248 Ivanhoe Road, Kununurra Post: PO Box 942 Kununurra, WA 6743 Phone: (08) 9168 4200 Email: kununurra@dbca.wa.gov.au
	West Kimberley District (Broome) Address: 111 Herbert Street, Broome Post: PO Box 65, Broome, WA 6725 Phone: (08) 9195 5500 Email: broome@dbca.wa.gov.au
Pilbara Region	Pilbara Region Address: Lot 3 Anderson Road, Karratha Industrial Estate Post: PO Box 835 Karratha WA 6714 Phone: (08) 9182 2000 Email: karratha.admin@dbca.wa.gov.au
	Exmouth District Address: 20 Nimitz Street, Exmouth Post: PO Box 201 Exmouth WA 6707 Phone: (08) 9947 8000 Email: exmouth@dbca.wa.gov.au
Midwest Region	Midwest Region / Murchison District Address: 351 Eighth Street, Woorree, 6530 Post: Box 72, Geraldton WA 6531 Phone: (08) 9964 0901 Email: geraldtonrecords@dbca.wa.gov.au

	<p>Kalbarri National Park Address: Ajana–Kalbarri Road, Kalbarri Post: PO Box 37, Kalbarri WA 6536 Phone: (08) 9937 1140</p>
	<p>Gascoyne District Address 61 Knight Terrace Denham Post: C/O Post Office, Denham WA 6537 Phone: (08) 9948 2226 Email: denham@dbca.wa.gov.au</p>
	<p>Monkey Mia Visitor Centre Address: 1 Monkey Mia Road Denham WA 6537 Phone: (08) 9948 1366</p>
	<p>Turquoise Coast District Address Lot 67 Bashford St, Jurien Bay Post: PO Box 638, Jurien Bay WA 6516 Phone: (08) 9688 6000 Email: jurien@dbca.wa.gov.au</p>
	<p>Pinnacles Desert Discovery Centre Nambung National Park Address: Pinnacles Road, Cervantes Post: PO Box 62, Cervantes WA 6511 Phone: (08) 9652 7913 Email: pinnacles-desert-discovery-centre-location@dbca.wa.gov.au</p>
Goldfields Region	<p>Goldfields Region Address: 32 Brookman Street, Kalgoorlie WA 6430 Post: PO Box 10173, Kalgoorlie WA 6433 Phone: (08) 9080 5555 Email: kalgoorlie@dbca.wa.gov.au</p>
Wheatbelt Region	<p>Wheatbelt Region Address: 7 Wald Street, Narrogin WA 6312 Post: PO Box 100, Narrogin WA 6312 Phone: (08) 9881 9200 Email: adminwheatbelt@dbca.wa.gov.au</p>
	<p>Merredin Work Centre Address: Cnr of Great Eastern Highway and Crooks Rd, Merredin WA 6415 Post: PO Box 332, Merredin WA 6415 Phone (08) 9041 6000 Email: merredin@dbca.wa.gov.au</p>

<p>Swan Region</p>	<p>Swan Region Address: 2 Australia II Drive, Crawley Post: Locked Bag 104, Bentley Delivery Centre WA 6983 Phone: (08) 9442 0300 Email: swanregion@dbca.wa.gov.au</p>
	<p>Swan Coastal District Address: 5 Dundobar Road, Wanneroo Post: PO Box 459, Wanneroo WA 6946 Phone: (08) 9303 7700 Email: wanneroo@dbca.wa.gov.au</p>
	<p>Regional Parks Address: 2 Australia II Drive, Crawley Post: Locked Bag 104, Bentley Delivery Centre WA 6983 Phone: (08) 9442 0300 Email: regional.parks@dbca.wa.gov.au</p>
	<p>Yanchep National Park Phone: (08) 9303 7759 Email: yanchep@dbca.wa.gov.au</p>
	<p>Perth Hills District Address: 275 Allen Road, Mundaring WA 6073 Phone: (08) 9290 6100 Email: mundaring@dbca.wa.gov.au</p>
	<p>Rivers and Estuaries Branch Address: 17 Dick Perry Avenue, Kensington Phone: (08) 9278 0921 Email: rivers.planning@dbca.wa.gov.au</p>
<p>Southwest Region</p>	<p>South West Region Address: Cnr Dodson Road and South West Highway, Bunbury Post: PO Box 1693, Bunbury WA 6231 Phone: (08) 9725 4300 Email: bunbury@dbca.wa.gov.au</p>
	<p>Wellington District Address: 147 Wittenoom Street, Collie WA Phone: (08) 9735 1988</p>
	<p>Blackwood District Address: 14 Queen Street, Busselton WA 6280 Phone: (08) 9752 5555 Email: blackwood@dbca.wa.gov.au</p>

<p>Warren Region</p>	<p>Warren Region Address: Brain Street, Manjimup Post: Locked Bag 2 Manjimup WA 6258 Phone: (08) 9771 7988 Email: warren.admin@dbca.wa.gov.au</p>
	<p>Donnelly District Address: Kennedy Street, Pemberton Post: PO Box 20 Pemberton WA 6260 Phone: (08) 9776 1207 Email: donnellyd@dbca.wa.gov.au</p>
	<p>Frankland District Address: South Coast Highway, Walpole WA 6398 Phone: (08) 9840 0400 Email: frankland.district@dbca.wa.gov.au</p>
<p>South Coast Region</p>	<p>South Coast Region / Albany District Address: 120 Albany Highway, Albany WA 6330 Phone: (08) 9842 4500 Email: albany@dbca.wa.gov.au</p>
	<p>Esperance District Address: 92 Dempster Street, Esperance Post: PO Box 234, Esperance WA 6450 Phone: (08) 9083 2100 Email: Esperance_admin@dbca.wa.gov.au</p>

External Contacts

Tourism Council Western Australia

Email: tcwa@tourismcouncilwa.com.au

Website: www.tourismcouncilwa.com.au

Friends of the Cape to Cape Track

Website: www.capetocapetrack.com.au

Munda Biddi Trail Foundation

Phone: (08) 6336 9699 or 1300 654 161

Email: foundation@mundabiddi.org.au

Website: <https://mundabiddi.org.au/>

Leave No Trace Australia

Website: www.lnt.org.au

Murujuga Aboriginal Corporation (MAC)

Murujuga Land and Sea Management Unit

313 King Bay Road, DAMPIER WA 6713

PO BOX 1544, KARRATHA WA 6714

Phone: (08) 9183 1248

Email: rangeradmin@murujuga.org.au

Other Government departments

Tourism Western Australia

Website: www.tourism.wa.gov.au

Department of Water and Environmental Regulation

Website: www.water.wa.gov.au

Water Corporation

Website: www.watercorporation.com.au

Civil Aviation Safety Authority

Website: <https://www.casa.gov.au/>

Parks Australia

Phone: 1800 069 352

Email: marineparks@awe.gov.au

Website: www.parksaustralia.gov.au/marine

To apply for a licence: onlineservices.environment.gov.au/parks/australian-marine-parks

Department of Fire and Emergency Services

Website: www.dfes.wa.gov.au

Emergency WA

Website: www.emergency.wa.gov.au

Western Australia Visitor Centers

Western Australian Visitor Centre

Address: 55 William Street, Perth WA

Phone: (08) 9483 1111 or 1800 812 808

Email: travel@westernaustralia.com

Website: www.wavisitorcentre.com.au