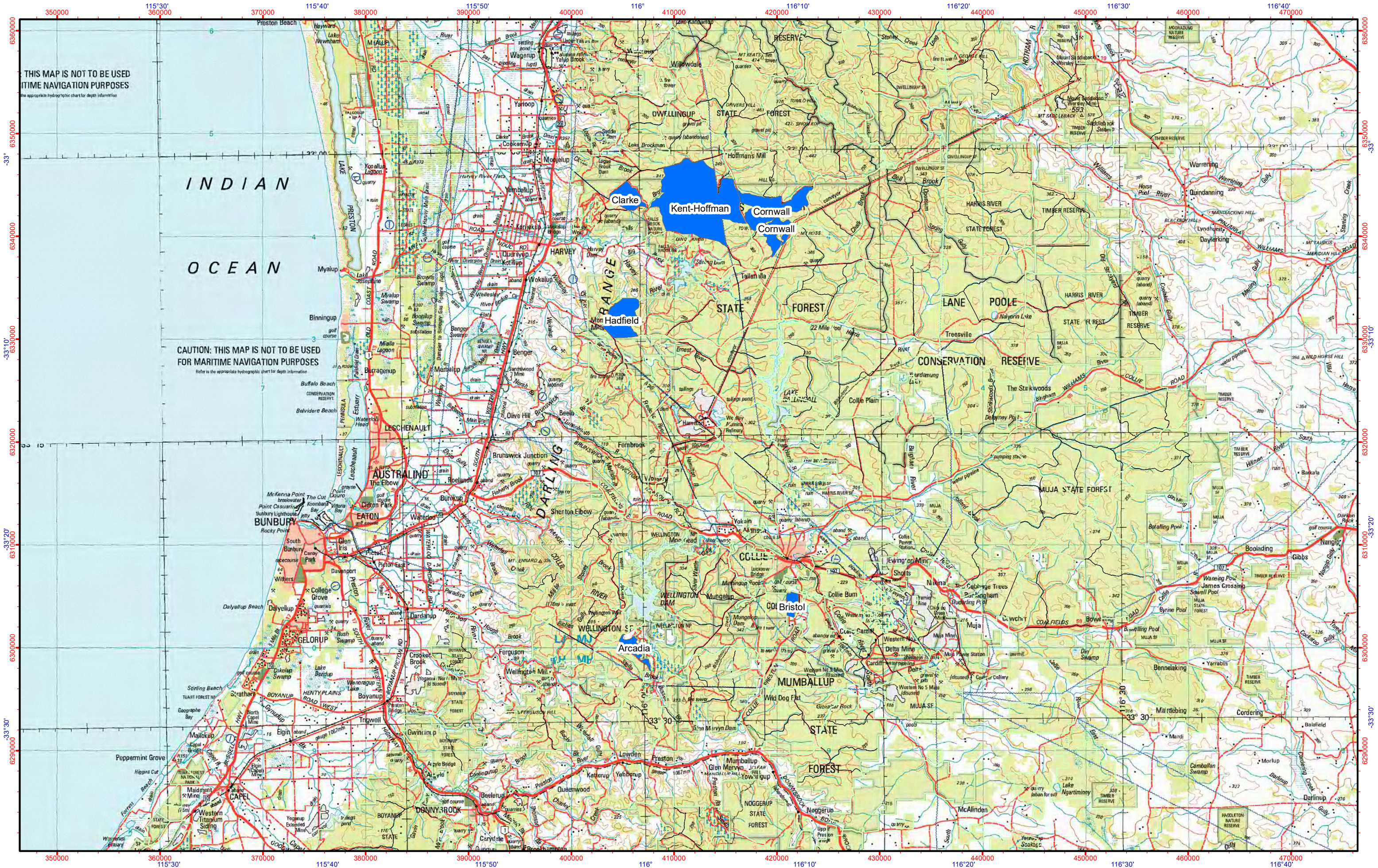


Wellington Firewood Collection Areas for 2023



Collecting firewood for personal use

Collecting firewood for personal use is permitted in some forest areas managed by the Department of Biodiversity, Conservation and Attractions (DBCA). Most areas designated for firewood collection are restricted to State forest located in DBCA's three forest regions, Swan, South West and Warren.

- Firewood can only be collected for **personal use**
- **Only collect firewood from areas shown on maps** provided by DBCA. Taking firewood from national parks, nature reserves or conservation parks is not allowed
- **Only take fallen timber.** You cannot cut down any standing tree, either dead or alive, or cut or break off any part of a standing tree for firewood. Felling trees can damage nearby vegetation
- There is a **limit to how much firewood can be removed**, and **when this can occur**. Between 1 June to 30 September, a maximum of one tonne may be removed every 60 days. Between 1 October to 31 May, a maximum of one tonne can only be removed on any one occasion. As a guide, a half a tonne equates to approximately a 6 x 4 trailer loaded 30cm deep
- **Chainsaws must not be used on days of total fire ban or Very High, Severe, Extreme or Catastrophic fire danger** (For alerts and warnings: www.emergency.wa.gov.au)
- Firewood collection areas have been selected to provide access to a good supply of the resource. Even so, it is **not possible to guarantee the quality or quantity of firewood**

To protect our forests, the continued availability of firewood and to ensure your safety, there are some must-dos when collecting firewood.

PROTECTING THE ENVIRONMENT

Phytophthora Dieback is a serious environmental threat, and large areas of State forest are set aside as a Dieback Risk Area (DRA). While firewood collection may be permitted in a DRA, permission to enter a DRA is required. Your local DBCA office can help with the process to enter a DRA.

To help prevent the spread of Phytophthora Dieback; if it is raining wait for a dry spell to collect firewood, avoid puddles and stay on existing tracks and roads as driving off-road disturbs vegetation and causes soil movement.

Avoid environmentally sensitive areas, such as stream and river reserves, granite outcrops and old-growth forest.

Do not cut logs marked with an **H** (usually marked with white spray paint). These logs are important habitat for our native animals.

Do not dispose of or dump garden refuse and litter in the forest, this is illegal and introduces weeds and diseases.

As DBCA has ongoing pest animal control across forest areas, pets should not be taken into State forest. Pest animal control will often involve baiting with 1080, a toxin hazardous to domestic animals but not native animals. Areas subject to baiting are signposted or a map of 1080 baiting sites is located on the DBCA website at www.dbca.wa.gov.au.



COLLECTING FIREWOOD

To find your nearest firewood collection area, contact or visit your local DBCA office. Maps can be viewed online at <https://www.dbca.wa.gov.au/parks-and-wildlife-service/firewood>.

When collecting firewood remember your safety is important, please take care and get everyone home safely. To do this keep the following in mind; wear appropriate safety gear and use any equipment, such as axes, chainsaws and wheelbarrows, as directed by the manufacturer, avoid working alone and keep on-hand an up-to-date first aid kit and be aware of any planned burns or fire bans.

PURCHASING FIREWOOD

You can purchase firewood and a list of authorised firewood suppliers and retail outlets is published on the Forest Products Commission's website at <https://www.wa.gov.au/government/publications/fpc-find-timber-supplier>