



Discover

Western Australia's

marine parks

Activity book



Heaps of
stickers!

Includes a super
sleuth challenge!



Department of Biodiversity,
Conservation and Attractions



**PARKS AND
WILDLIFE**
SERVICE

Marine parks in Western Australia

We need marine parks for the same reasons that we need national parks on the land.

Together marine parks and national parks protect our precious plants and animals, above and below the water line. For more details about Western Australia's very special marine parks, and the marine plants and animals that live in them, visit

dbca.wa.gov.au/marineparkswa

Marine parks and reserves protect Western Australia's underwater wonders, from the world's biggest seagrass meadows and the world's largest population of dugongs in Shark Bay Marine Park, to the humpback whale nursery at Camden Sound Marine Park and thousands of offshore islands that are important breeding areas for sea lions, fur seals, penguins and seabirds.

This activity book has been produced by the Department of Biodiversity, Conservation and Attractions to help promote Western Australia's unique marine parks.

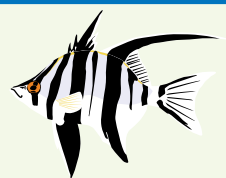
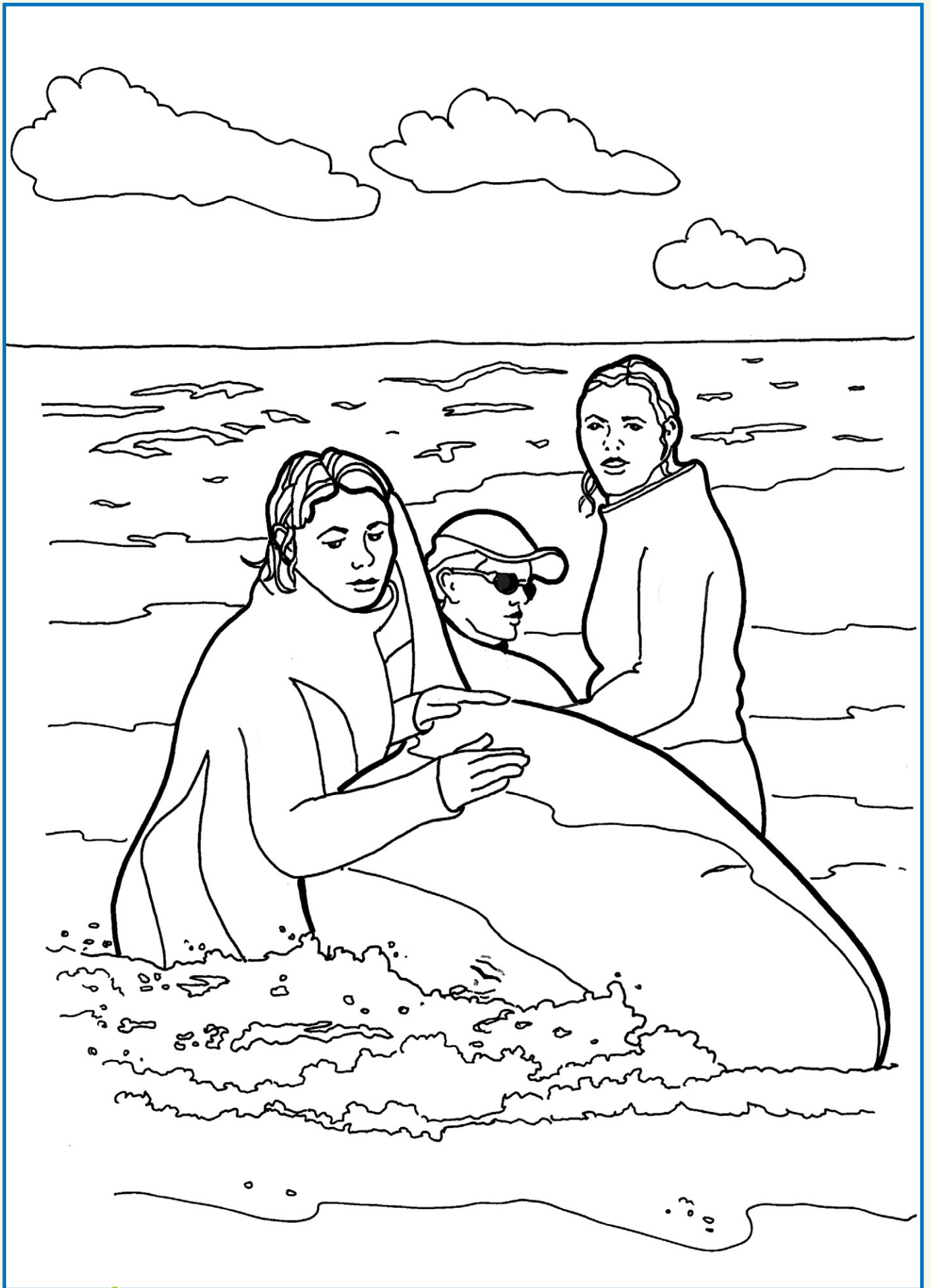


Department of **Biodiversity,
Conservation and Attractions**

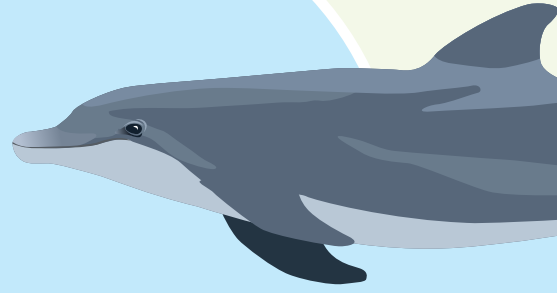


**PARKS AND
WILDLIFE
SERVICE**





Having fun in marine parks



What can you do in Western Australian marine parks?

windsurf

snorkel

fishing

surfing

swimming

kitesurf

dive

whalewatching

crabbing

kayak

boating

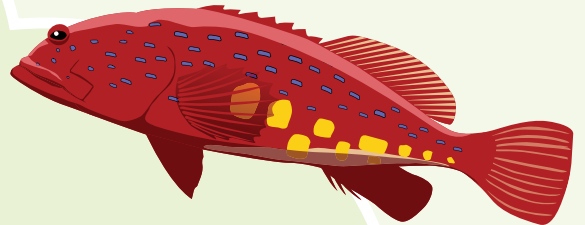
Crossword Clues

Down

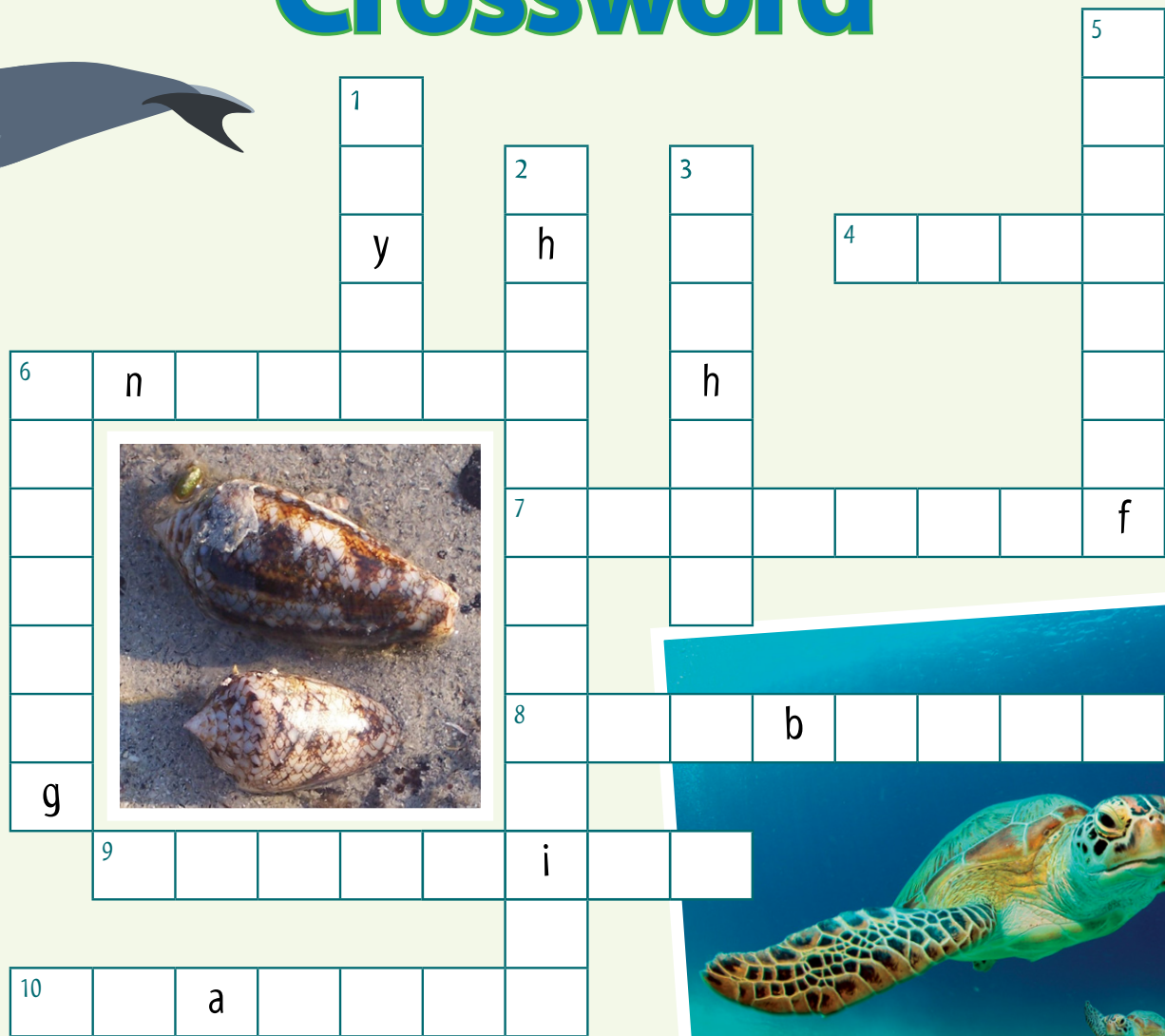
1. A type of canoe
2. Watching the antics of big marine mammals
3. Catching scaled creatures with a line and hook
5. Use a kite and a board for sport
6. Riding the waves

Across

4. Explore under the ocean using a scuba tank
6. Swim with a breathing tube and face mask
7. Use a sail and a board for sport
8. Catching shelled animals
9. Moving through the water using your arms and legs
10. Enjoying marine areas on a boat



Crossword



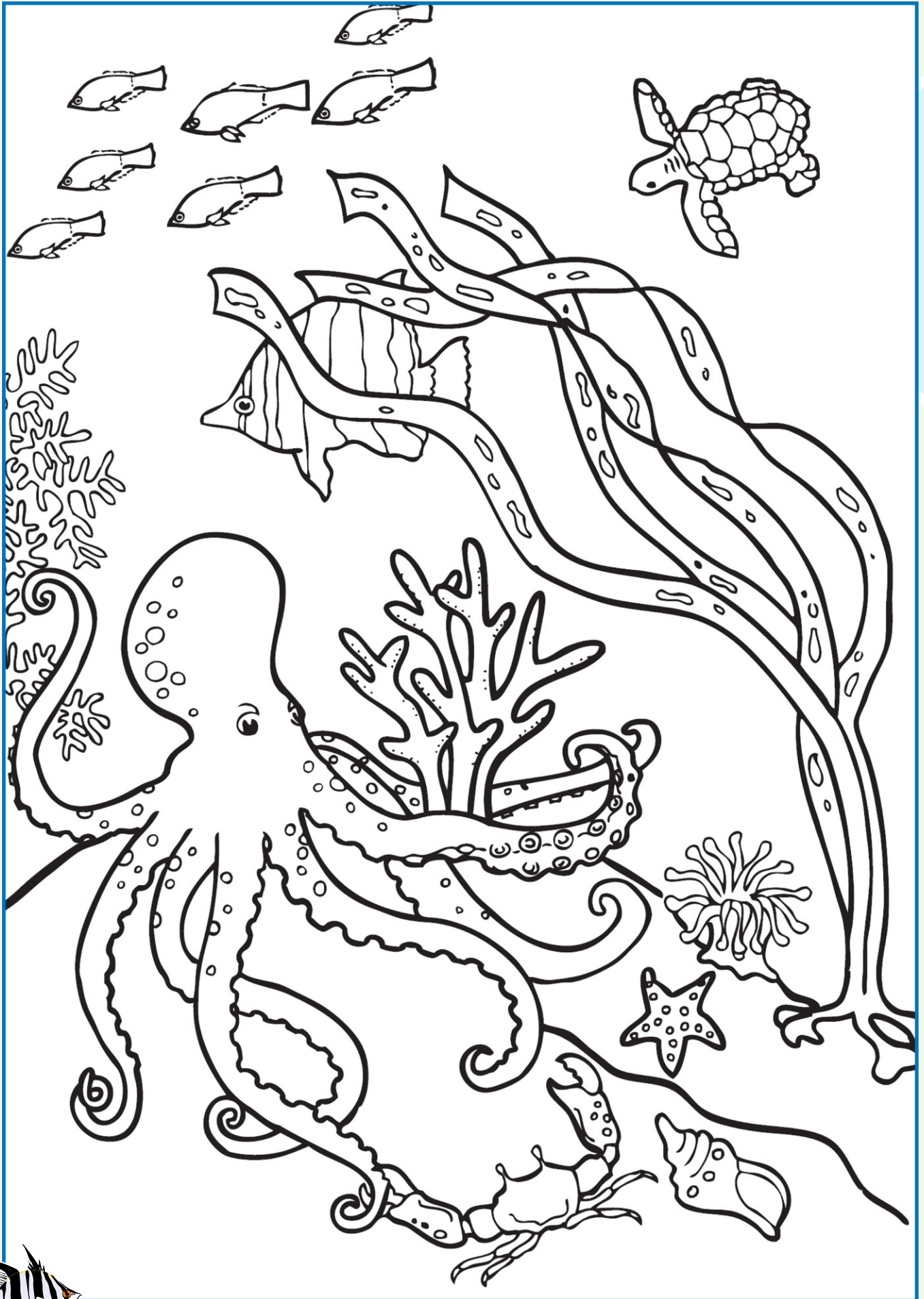
Answers: page 23

Marine parks have different zones for different types of activities. Sanctuary zones are special areas in Western Australian marine parks from which you can't remove any marine animals or plants at all. Two of the above activities are not allowed in sanctuary zones. What are they?

F _ _ S _ _ I N _ _

C _ _ _ _ B _ _ _ G





We need marine parks

Marine muddle

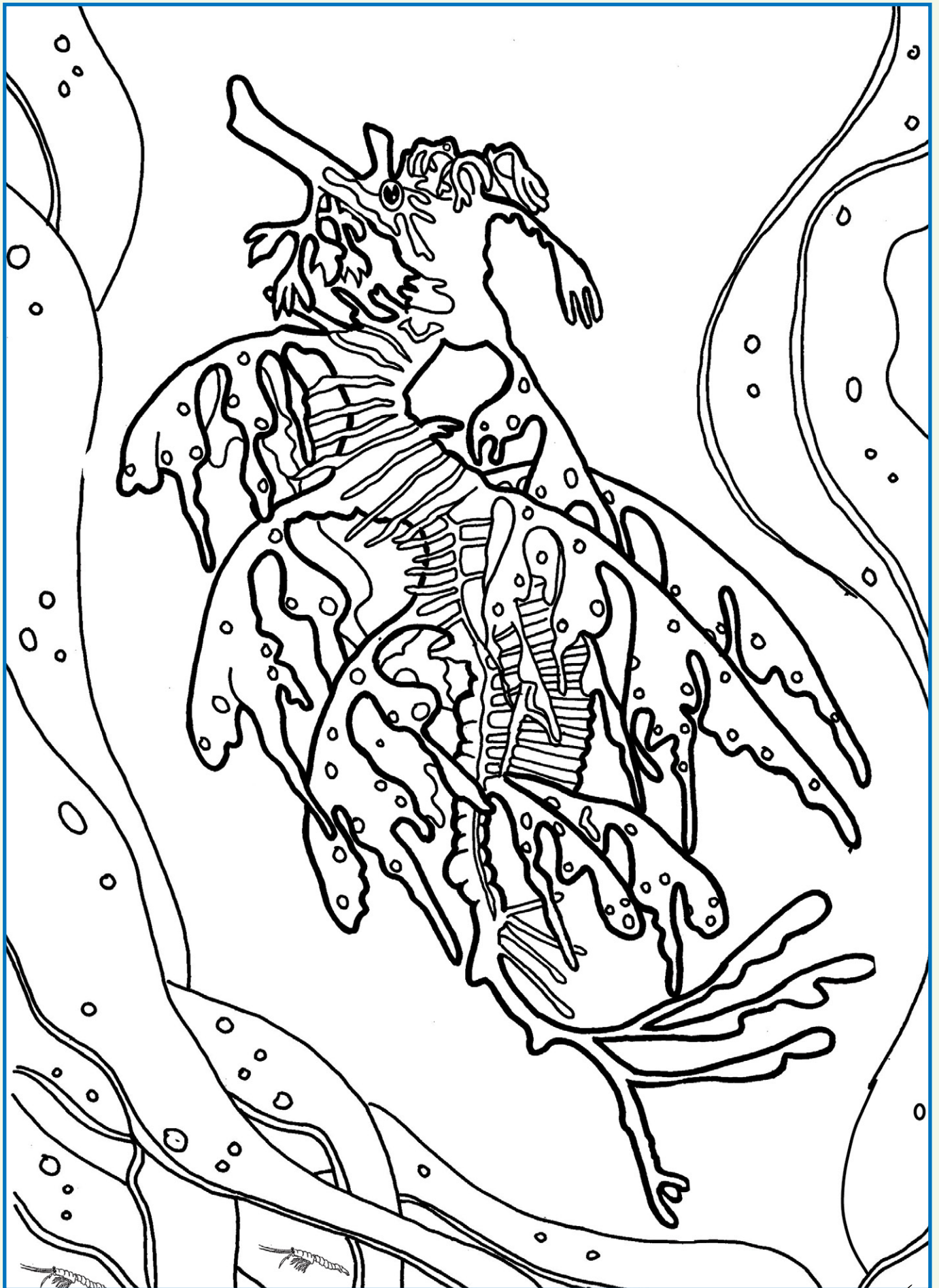


a	s	n	u	b	f	i	n	d	o	l	p	h	i	n	p	i	d	u	i
c	l	o	w	n	f	i	s	h	h	g	v	m	a	n	t	a	r	a	y
c	d	a	c	h	u	m	p	b	a	c	k	w	h	a	l	e	q	e	o
s	r	u	n	m	p	o	h	e	r	m	i	t	c	r	a	b	t	s	c
e	a	o	g	e	c	o	k	a	t	h	s	s	e	a	g	r	a	s	s
a	n	o	c	o	p	l	t	m	a	n	t	i	s	s	h	r	i	m	p
s	s	h	o	o	n	o	m	a	r	i	n	e	p	a	r	k	e	e	f
l	m	a	n	t	d	g	o	e	t	v	t	y	n	g	r	o	x	e	p
u	m	j	y	a	n	i	z	r	c	o	r	a	l	r	e	e	f	b	i
g	b	u	t	r	o	p	l	o	b	a	c	t	l	e	o	a	l	s	n
n	r	e	d	t	a	i	l	e	d	t	r	o	p	i	c	b	i	r	d
c	d	o	l	c	p	h	i	b	s	h	r	e	d	t	b	a	r	e	a
h	m	q	w	e	r	r	y	u	u	i	o	o	p	a	u	s	d	f	n
g	a	h	j	k	l	a	z	v	x	c	v	b	p	n	m	r	q	w	e
o	n	r	o	v	e	t	b	k	t	r	o	p	e	i	c	d	t	a	i
i	g	o	l	k	j	c	r	b	a	b	t	l	a	a	c	s	s	l	u
d	r	s	a	w	f	i	s	h	v	y	h	f	r	o	i	a	k	l	e
h	o	u	r	o	w	l	e	y	s	h	o	a	l	s	b	a	l	c	k
p	v	o	t	a	t	o	b	a	r	r	a	m	u	n	d	i	r	y	h
c	e	i	s	a	n	c	t	u	a	r	y	z	o	n	e	b	a	l	o

Look for the words below, which are hidden amongst the letters:

barramundi	humpback whale	pearl	seagrass
clownfish	mangrove	potato cod	snubfin dolphin
coral reef	manta ray	red tailed tropicbird	tropical
crocodile	mantis shrimp	sanctuary zone	turtle
dugong	marine park	sawfish	
hermit crab	mud crab	sea slug	

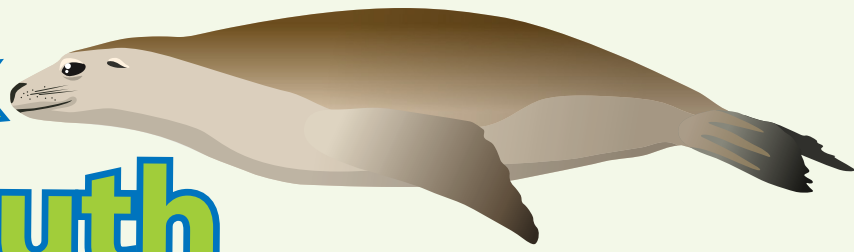




Save our seadragons



Marine park word sleuth

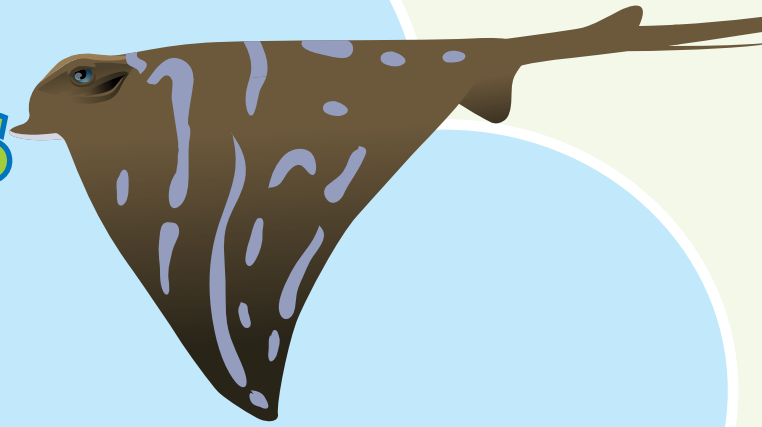


m	m	s	e	a	l	i	o	n	a	k	e	l	p	r	i	n	n
e	a	p	c	u	t	t	l	e	f	i	s	h	a	r	k	i	s
w	n	r	a	r	e	n	i	h	p	l	o	d	l	o	u	s	f
h	e	t	i	t	u	r	t	l	e	s	o	f	f	g	u	l	l
a	m	n	s	n	s	e	a	s	t	a	r	o	n	w	e	a	o
l	o	n	c	e	e	d	d	i	v	e	t	e	o	p	r	n	u
e	n	e	l	o	t	p	e	c	t	o	p	u	r	b	n	d	n
y	e	s	a	e	a	u	a	s	h	r	i	m	p	o	t	i	d
r	f	r	m	m	a	n	g	r	o	v	e	u	g	f	l	m	e
a	t	o	s	q	u	i	d	r	k	e	a	a	r	s	a	f	r
u	e	h	s	s	a	r	g	a	e	s	r	u	o	n	r	l	p
t	r	a	h	k	a	y	a	k	a	d	s	s	t	e	e	a	f
c	n	e	i	s	a	i	l	n	a	d	d	a	t	e	u	t	e
n	r	s	p	s	u	r	f	e	n	g	r	s	y	g	e	n	e
a	e	r	w	a	t	i	s	i	n	a	b	a	n	s	s	a	r
s	n	o	r	k	e	l	w	o	y	o	r	c	w	e	e	d	l
t	u	a	e	r	y	f	g	o	l	o	s	p	o	n	g	e	a
e	e	l	c	s	t	u	u	n	m	n	u	r	c	h	i	n	r
r	u	g	k	s	d	n	j	e	l	l	y	f	i	s	h	e	o
p	e	l	i	c	a	n	o	c	t	o	p	u	s	b	a	r	c

The following animals, plants and activities can be found in marine parks. Find them in the word sleuth:

anemone	flounder	lobster	sail	shark	surf
clam	gull	marine parks	sanctuary	shipwreck	tern
crab	island	moray eel	sea lion	shrimp	urchin
cuttlefish	jellyfish	octopus	sea star	snorkel	weed
dive	kayak	pelican	seadragon	sponge	whale
dolphin	kelp	penguin	seahorse	squid	windsurf

Tips for kids



When you visit marine parks and other marine areas including the beach please take care—both of yourself and of the environment.



Remember to 'slip, slop, slap, wrap' and make sure you're well prepared. Always bring sunscreen, a hat and a T-shirt. Take extra drinking water and wear protective footwear when reef walking.



Keep to paths and beaches. Help conserve wildlife and take care not to disturb nesting seabirds and dune vegetation.



Please do not feed wildlife as our native animals need a natural diet to stay healthy.



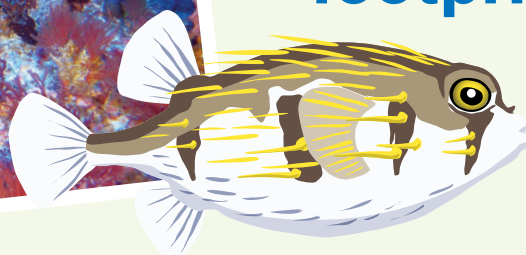
Take your rubbish with you when you leave.

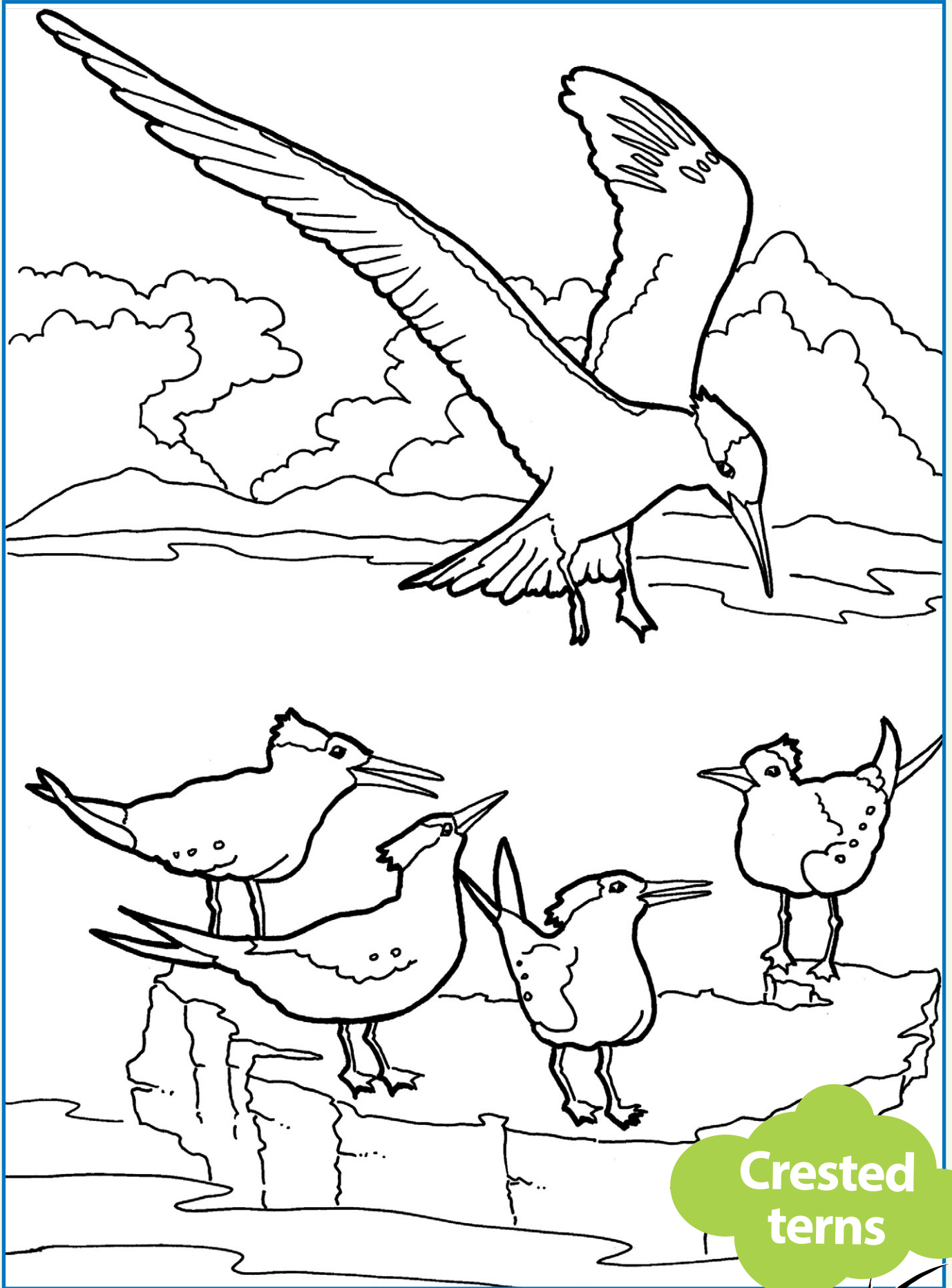


Some marine animals can be dangerous, so if in doubt keep your distance and be careful what you touch or pick up.



Remember, take only photographs and leave only footprints.

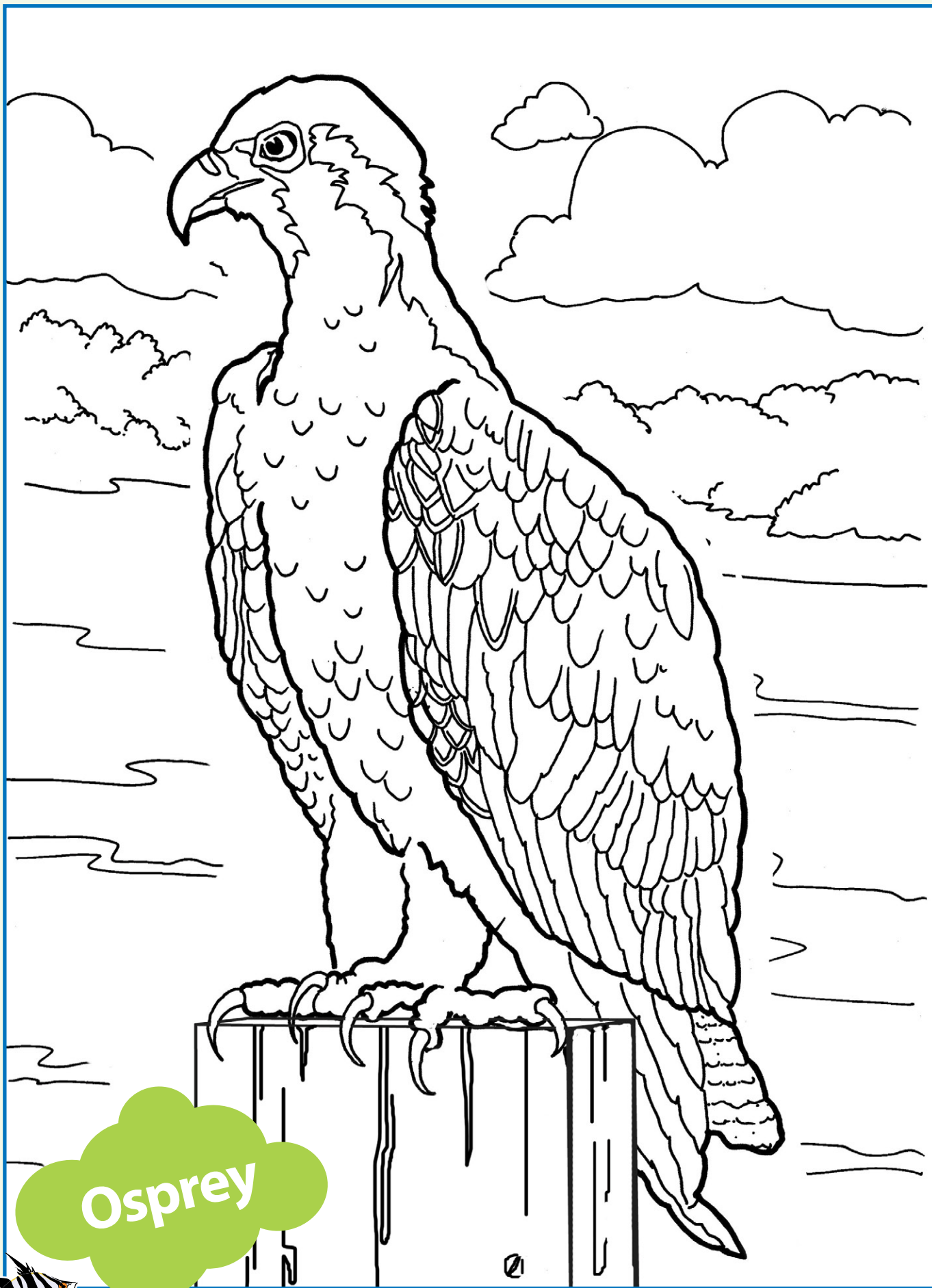




Crested
terns

Marine parks are cool

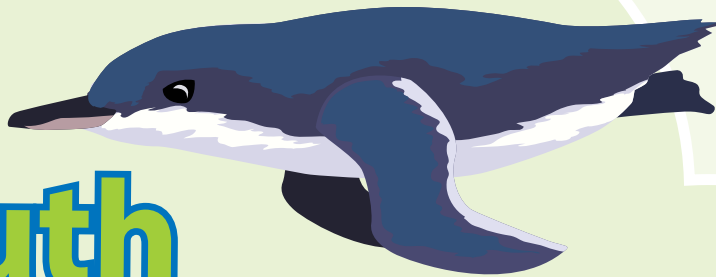




Osprey

I love marine parks

Seabirds word sleuth



Seabirds are often seen feeding and soaring over marine parks. Circle common seabirds from the list below. Use the leftover letters to answer the question: why are marine parks important to seabirds?

t	r	o	p	i	c	b	i	r	d	s	n	e	a
a	c	y	b	w	p	l	o	v	e	r	i	i	l
r	r	s	d	h	s	n	e	t	e	e	u	d	b
n	e	t	l	i	p	h	t	n	n	g	g	s	a
r	s	e	e	m	e	e	e	a	a	r	n	a	t
e	t	r	s	b	t	a	n	r	c	e	e	n	r
t	e	c	s	r	r	l	n	o	i	t	p	d	o
d	d	a	e	e	e	t	a	m	l	h	e	p	s
e	t	t	r	l	l	u	g	r	e	v	l	i	s
l	e	c	n	y	h	a	b	o	p	i	t	p	s
d	r	h	o	t	a	t	s	c	t	o	t	e	k
i	n	e	d	s	t	i	n	t	t	h	i	r	u
r	r	r	d	i	s	e	a	e	a	g	l	e	a
b	v	e	y	b	o	o	b	d	e	k	s	a	m

albatross

bridled tern

cormorant

gannet

little penguin

lesser noddy

oystercatcher

petrel

pelican

plover

sea eagle

sandpiper

skua

silver gull

stint

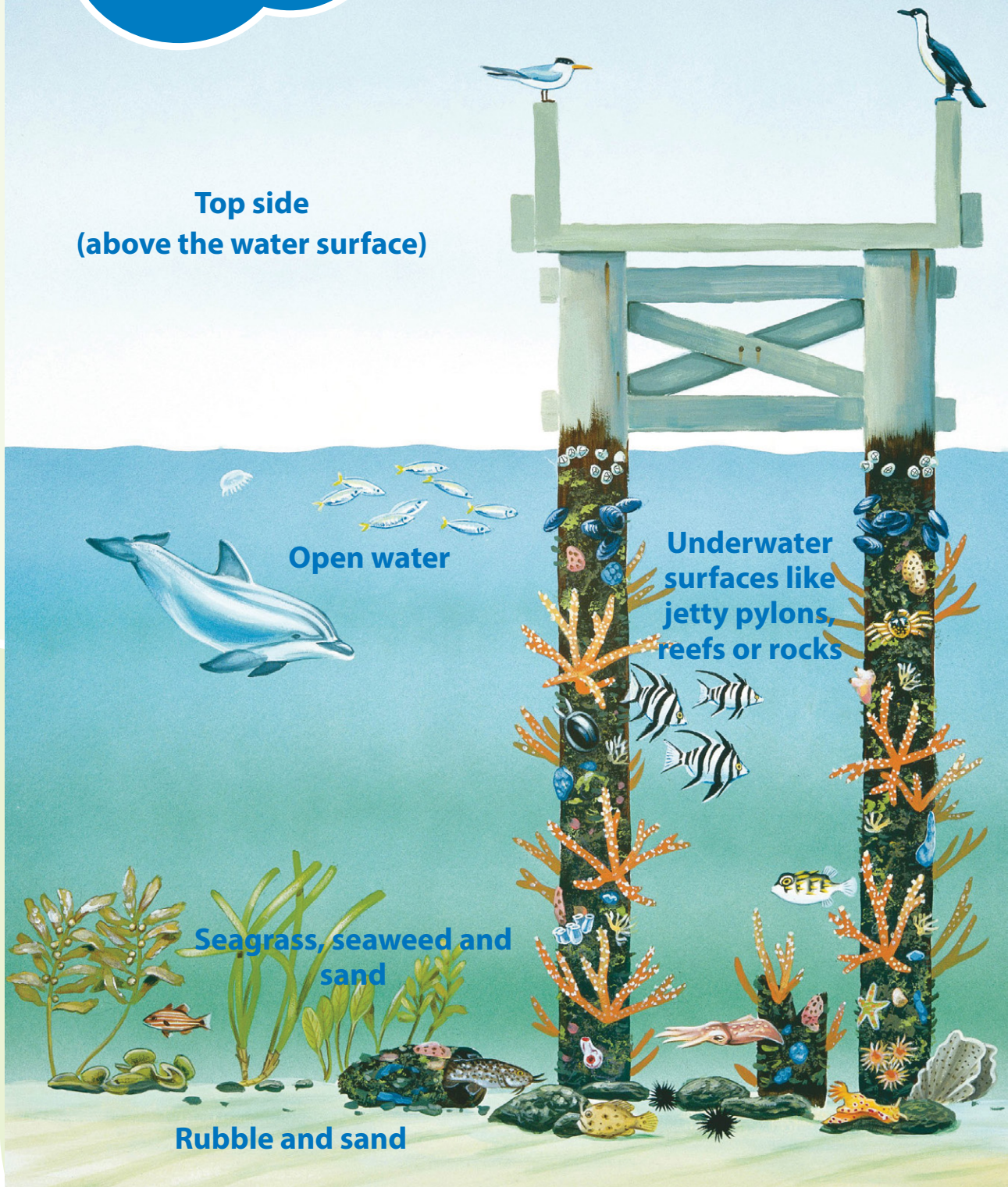
tropicbird

whimbrel



Habitats in marine parks of southern WA

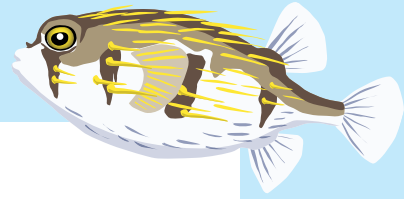
**Top side
(above the water surface)**



Place the stickers
where you think
they live!

Different marine animals and plants need different underwater habitats.

Match the marine park habitats to the type of animals that live there
by placing the stickers in the boxes below.



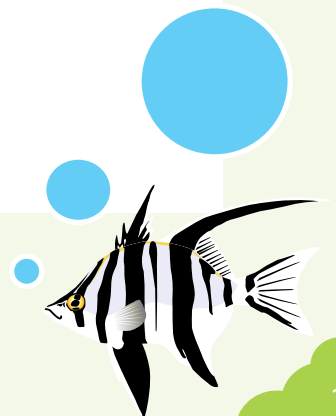
Top side (above the water surface)

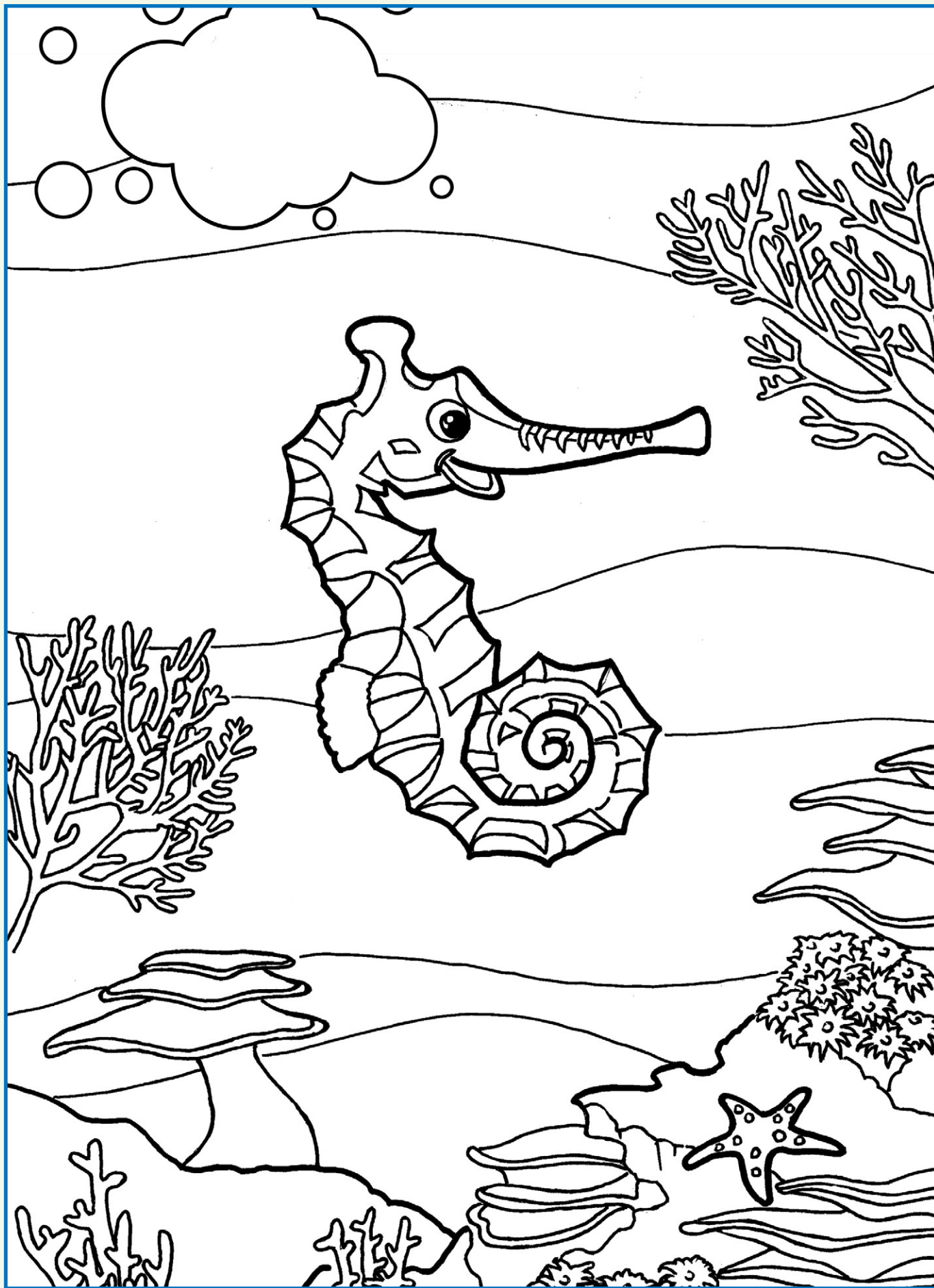
Seagrass, seaweed and sand

Open water

Underwater surfaces like jetty pylons, reefs or rocks

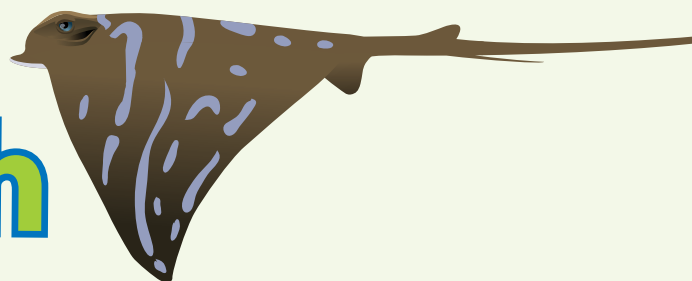
Rubble and sand





You can find Toot the seahorse at
dbca.wa.gov.au/marineparkswa

Marine litter word sleuth



e	n	t	a	n	g	l	e	m	e	n	t	p	f	p	s
r	u	o	b	o	t	t	l	e	s	t	o	i	e	s	t
c	s	w	c	h	o	k	e	c	n	l	s	s	r	d	a
l	e	h	o	o	k	s	t	o	y	h	d	e	r	m	r
e	b	a	a	r	i	s	i	s	i	r	p	i	b	n	v
a	i	l	e	a	t	t	t	n	i	p	n	n	e	i	a
n	n	e	m	a	u	y	g	b	a	k	a	l	a	s	t
m	s	a	o	l	r	l	a	r	c	n	d	k	c	e	i
a	e	l	l	e	i	e	w	a	p	n	e	t	h	o	o
r	f	o	n	n	s	y	n	r	u	b	b	i	s	h	n
i	p	e	e	r	l	s	u	r	i	n	j	u	r	y	b
n	e	a	c	l	o	h	n	o	i	t	c	e	f	n	i
e	e	s	o	c	e	p	l	d	o	l	p	h	i	n	e
a	n	l	t	a	l	k	e	s	e	a	l	i	o	n	s
e	p	l	a	s	t	i	c	b	a	g	s	r	u	b	b
r	e	g	n	a	r	i	s	h	h	r	e	t	t	i	l
d	e	a	t	h	u	o	b	a	l	l	o	o	n	s	m
b	o	a	t	e	t	s	p	a	r	t	s	t	i	a	b

Find and circle the following words. Write down the leftover letters to find out what to do with your litter when you go to the beach.

bait straps

balloons

beach

boat

bottles

clean marine

choke

death

dolphin

drink cans

entanglement

fishing line

floats

hooks

infection

injury

litter

lolly wrappers

net

plastic bags

pollution

polystyrene

ranger

rope

rubbish

seabirds

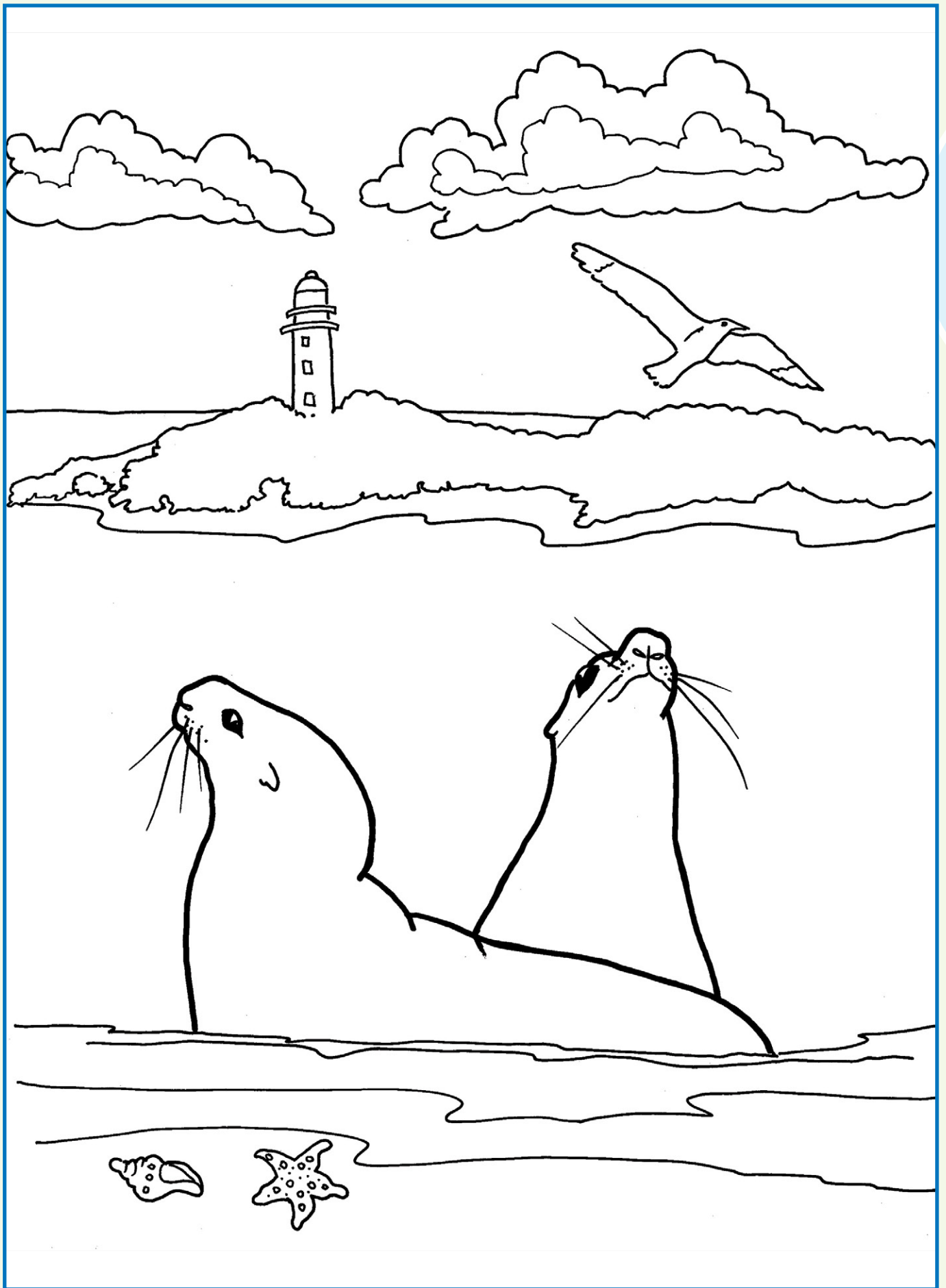
sea lions

starvation

turtle

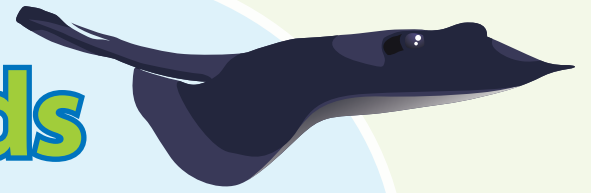
use bins

whale



Conserve our coast

Match the words to their meanings



Litter like plastic bags can end up in our oceans and if eaten accidentally by an animal may lead to starvation. To save marine animals, try to collect three pieces of rubbish every time you visit the beach and put them in the bin.

Marine park rangers

People who look after our marine parks and precious marine animals.

Drink cans

Sharp metal fishing equipment that can injure marine animals.

Hooks

The result of a turtle eating a plastic bag.

Fishing net

Metal containers sometimes thrown into the ocean by people that can take up to 80 years to break down.

Plastic bags

A large marine mammal that sometimes becomes tangled up in floats, ropes and other fishing equipment.

Turtle

A large marine reptile that sometimes accidentally eats plastic bags after confusing them with jellyfish, on which it feeds.

Whale

Fishing equipment made of ropes that should not be thrown away at sea, as it can be a danger to large marine animals.

Starvation

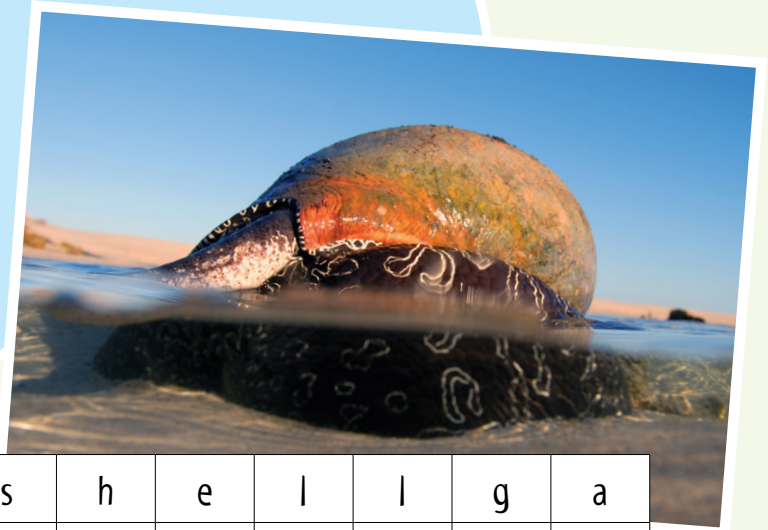
See-through bags that do not break down in the ocean for up to 20 years.



Shelled wonders word sleuth

Hundreds of different types of shells live in Western Australian marine parks.

Circle the ones you can find below:



b	u	b	b	l	e	s	h	e	l	l	g	a
a	t	o	a	c	o	c	k	l	e	i	a	b
l	u	y	m	p	t	a	y	s	s	m	s	a
e	r	s	w	h	e	l	k	h	n	p	t	l
r	b	t	e	l	n	l	s	m	a	e	r	o
t	a	e	a	z	e	o	c	h	i	t	o	n
o	n	r	g	r	h	p	a	z	l	h	p	e
p	s	c	l	a	m	o	p	i	p	i	o	m
s	h	o	m	t	r	i	t	o	n	e	d	u
h	e	n	c	o	n	e	s	h	e	l	l	s
e	l	c	o	w	r	i	e	s	d	o	r	s
l	l	h	p	e	r	i	w	i	n	k	l	e
l	c	r	l	m	o	l	l	u	s	c	g	l

abalone

cowrie

pipi

baler

gastropod

scallop

bubble shell

limpet

snail

chiton

mollusc

top shell

clam

mussel

triton

cockle

oyster

turban shell

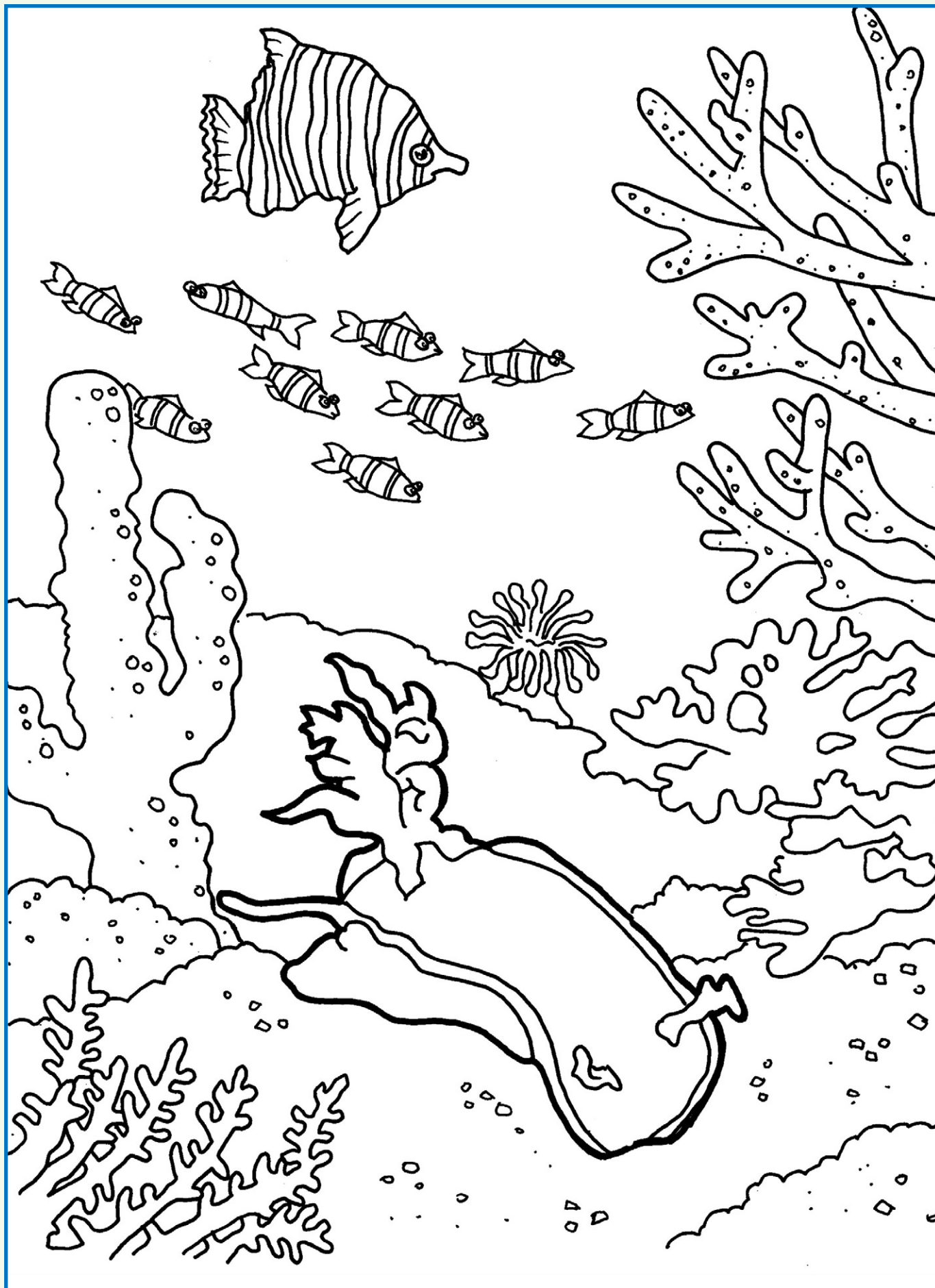
conch

periwinkle

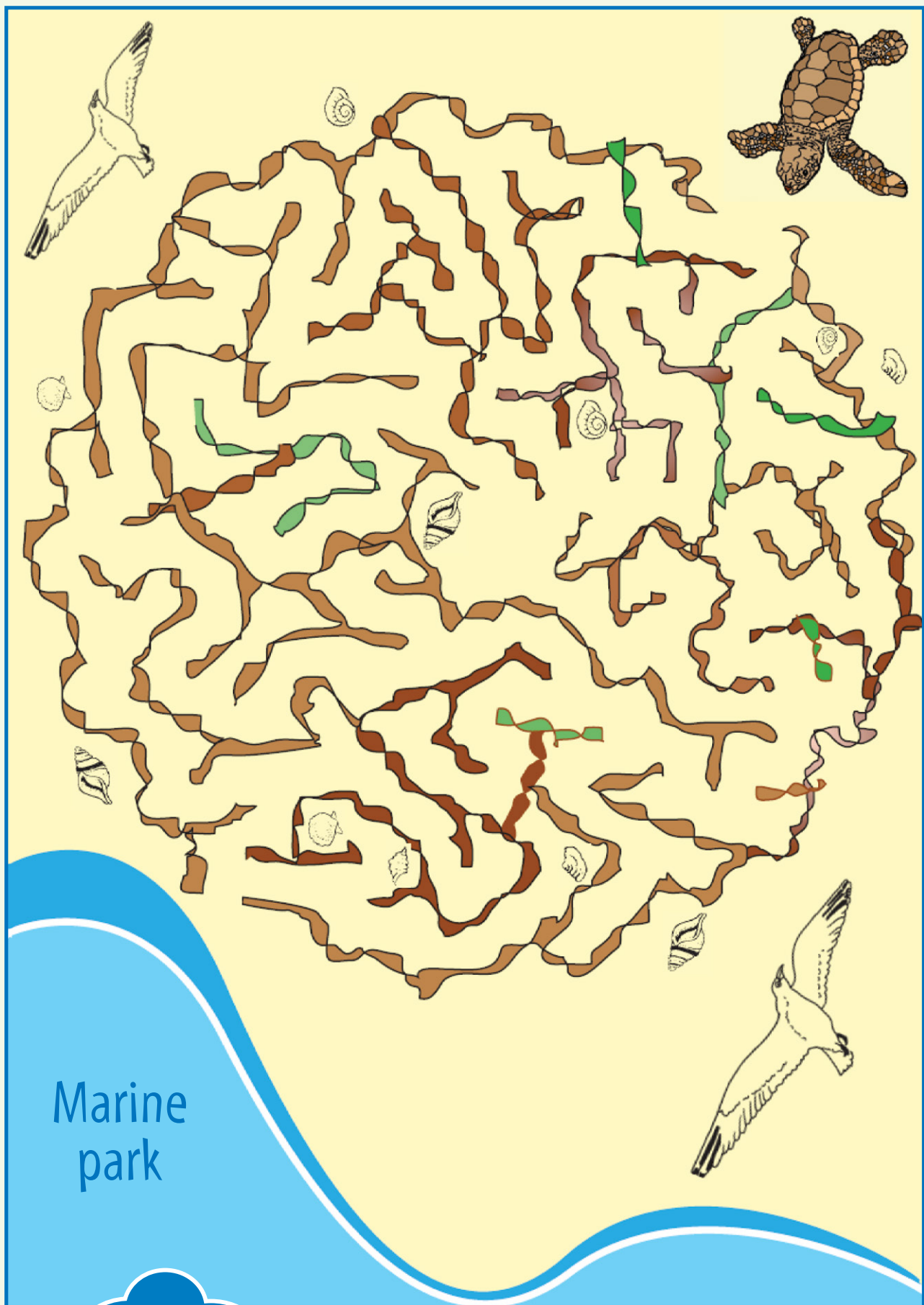
whelk

coneshell





Dive into marine parks



Help the turtle hatchling find its way to the marine park

Match the words to their meanings



Mangrove

A flightless bird that catches fish in the ocean.

Penguin

A fish that lies flat on the sea floor.

Tern

An unusual-looking fish with a curled tail and a pouch on its belly in which its eggs are laid.

Dugong

A tree that can grow in salt water and 'breathe' through its roots.

Sanctuary zone

A hard structure built from living creatures that is home to many fish and other underwater animals.

Sponge

A colourful underwater animal whose skeleton is sometimes used in the bath.

Whale shark

A marine animal that usually has five or more arms but no face.

Sea star

A zone in a marine park in which visitors can look but not fish or remove marine animals or plants.

Seahorse

A reptile that spends most of its life in the ocean except when it comes ashore to lay eggs.

Turtle

A seabird that nests on many islands in Western Australian marine parks.

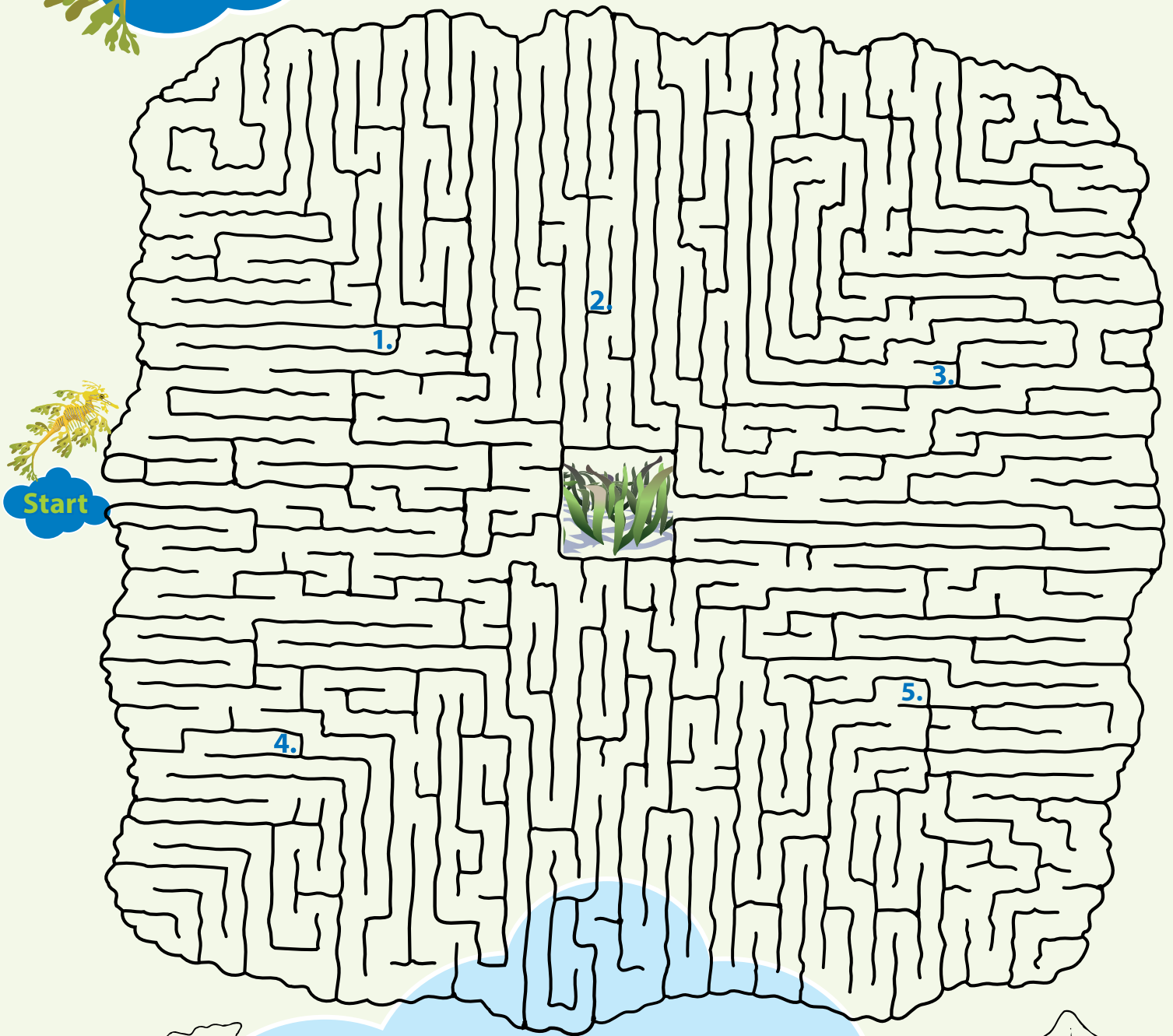
Flounder

An air-breathing mammal that eats seagrass, sometimes known as a 'sea cow'.

Coral reef

The biggest shark in the world.

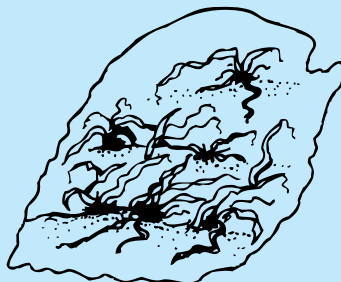
Help leafy seadragon avoid the dangers and get home safely



1. Plastic bag



2. Fishing line



3. Seagrass dredging



4. Storm water

5. Plastic litter



Answers

Having fun in marine parks, page 4

Down

1. Kayak; 2. Whalewatching; 3. Fishing; 5. Kitesurf; 6. Surfing;

Across

4. Dive; 6. Snorkel; 7. Windsurf; 8. Crabbing; 9. Swimming; 10. Boating

Seabirds word sleuth, page 11

Solution: Seabirds need healthy habitats to thrive.

Habitats in marine parks of southern WA, pages 12–13

Top side: Crested tern; cormorant

Seagrass, seaweed: Wrasse, sea urchin, seagrass, seaweed

Open water: Dolphin, jellyfish, schooling fish, porcupine fish, cuttlefish

Underwater surfaces like jetty pylons, reefs or rocks: Soft corals, sponges, sea star, barnacles, sea squirts, sea slug, mussels, anemones, sponges, sea slug

Rubble and sand: Catfish, anglerfish, sea urchin, sea slug, sponges

Marine litter word sleuth, page 15

Solution: Protect marine animals and keep our beaches clean. Take rubbish home.

Match the words to their meanings, page 17

Marine park rangers People who look after our marine parks and precious marine animals.

Starvation What can happen to many marine animals due to rubbish being discarded at sea.

Drink cans Metal containers sometimes thrown into the ocean by people that can take up to 80 years to break down.

Hooks Sharp metal fishing equipment that can injure marine animals.

Fishing net Fishing equipment made of ropes that should not be discarded at sea, as it can be a danger to large marine animals.

Plastic bags See-through bags that do not break down in the ocean for up to 20 years.

Turtle A large marine reptile that sometimes accidentally eats plastic bags after confusing them with jellyfish, on which it feeds.

Whale A large marine mammal that sometimes becomes entangled in floats, ropes and other fishing equipment.

Match the words to their meanings, page 21

Penguin A flightless bird that catches fish in the ocean.

Mangrove A tree that can grow in salt water and 'breathe' through its roots.

Flounder A fish that lies flat on the sea floor.

Seahorse An unusual-looking fish with a curled tail and a pouch on its belly in which its eggs are laid.

Dugong An air-breathing mammal that eats seagrass, sometimes known as a 'sea cow'.

Coral reef A hard structure built from living creatures that is home to many fish and other underwater animals.

Sponge A colourful underwater animal whose skeleton is sometimes used in the bath.

Whale shark The biggest shark in the world.

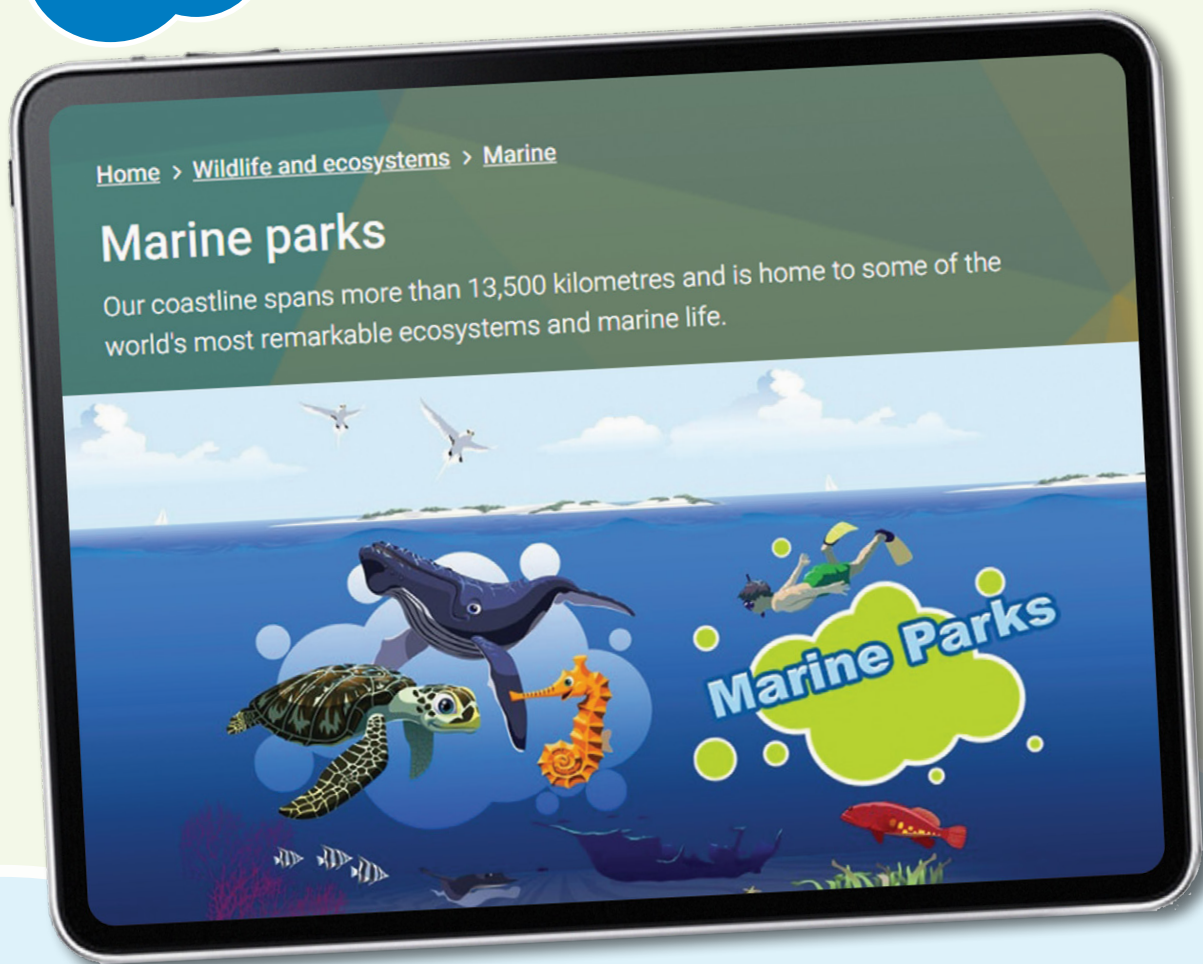
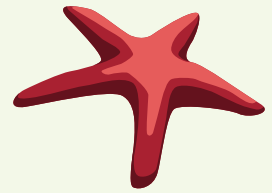
Sea star A marine animal that has usually has five or more arms but no face.

Sanctuary zone A zone in a marine park in which visitors can look but not fish or remove marine animals or plants.

Turtle A reptile that spends most of its life in the ocean except when it comes ashore to lay eggs.

Tern A seabird that nests on many islands in Western Australian marine parks.

Visit us online



**For more information about
marine parks in WA go to:**

dbca.wa.gov.au/marineparkswa



or scan the QR code

**Remember –
reduce, reuse, recycle
and keep our marine
areas clean.**

**To find out more about marine litter go to
[dbca.wa.gov.au/wildlife-and-ecosystems/marine/
marine-parks/marine-park-protectors](http://dbca.wa.gov.au/wildlife-and-ecosystems/marine/marine-parks/marine-park-protectors)**

**Can you see
what's wrong?**





Visit our
website!

dbca.wa.gov.au/marineparkswa

The illustrations and activities in this book may be copied for educational purposes.
Published May 2025.