



Swan Canning Estuary Water Quality Monitoring Project

Weekly Water Quality Report

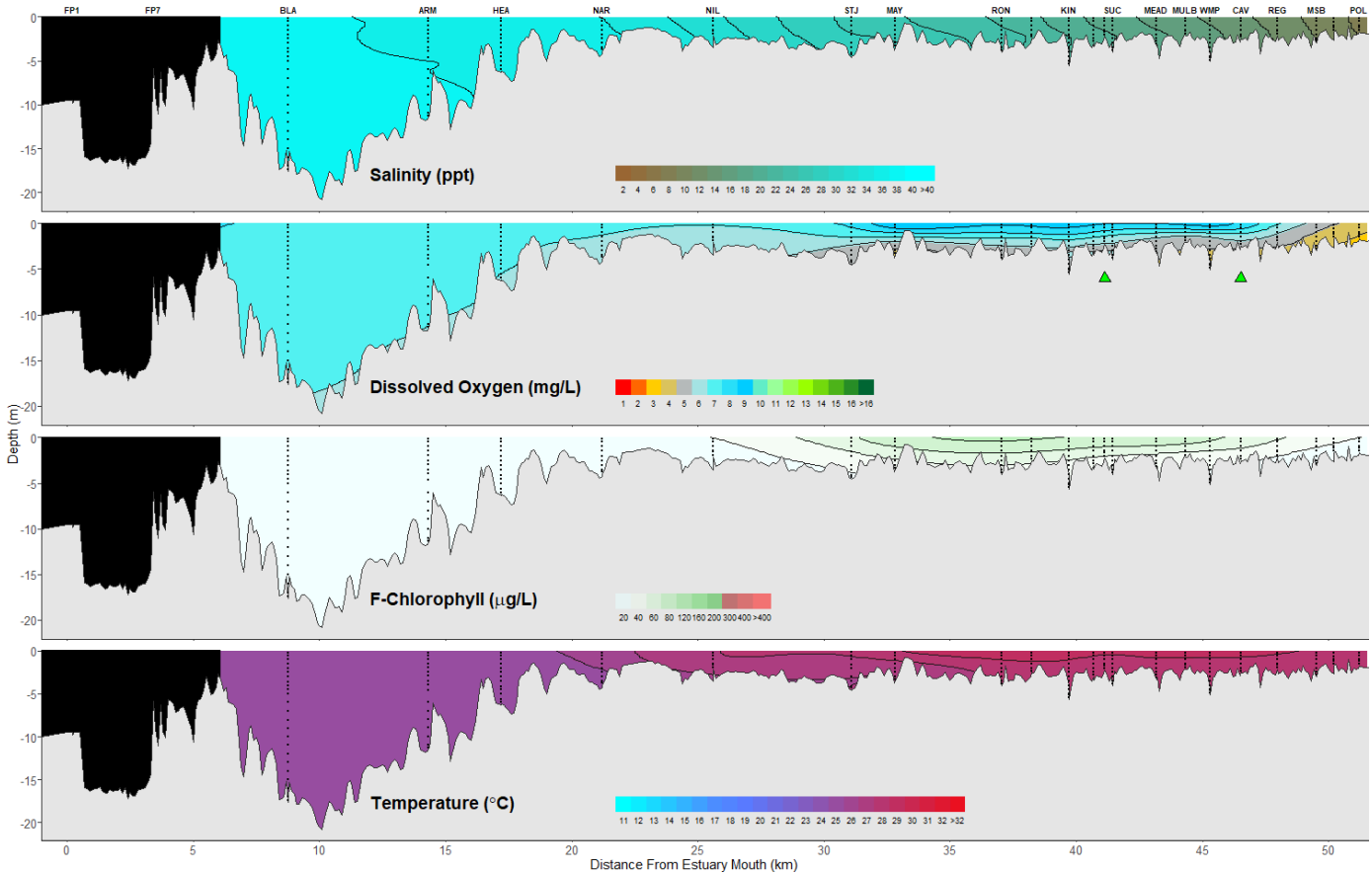
Lower Swan Canning Estuary to Upper Swan Estuary

2 February 2026

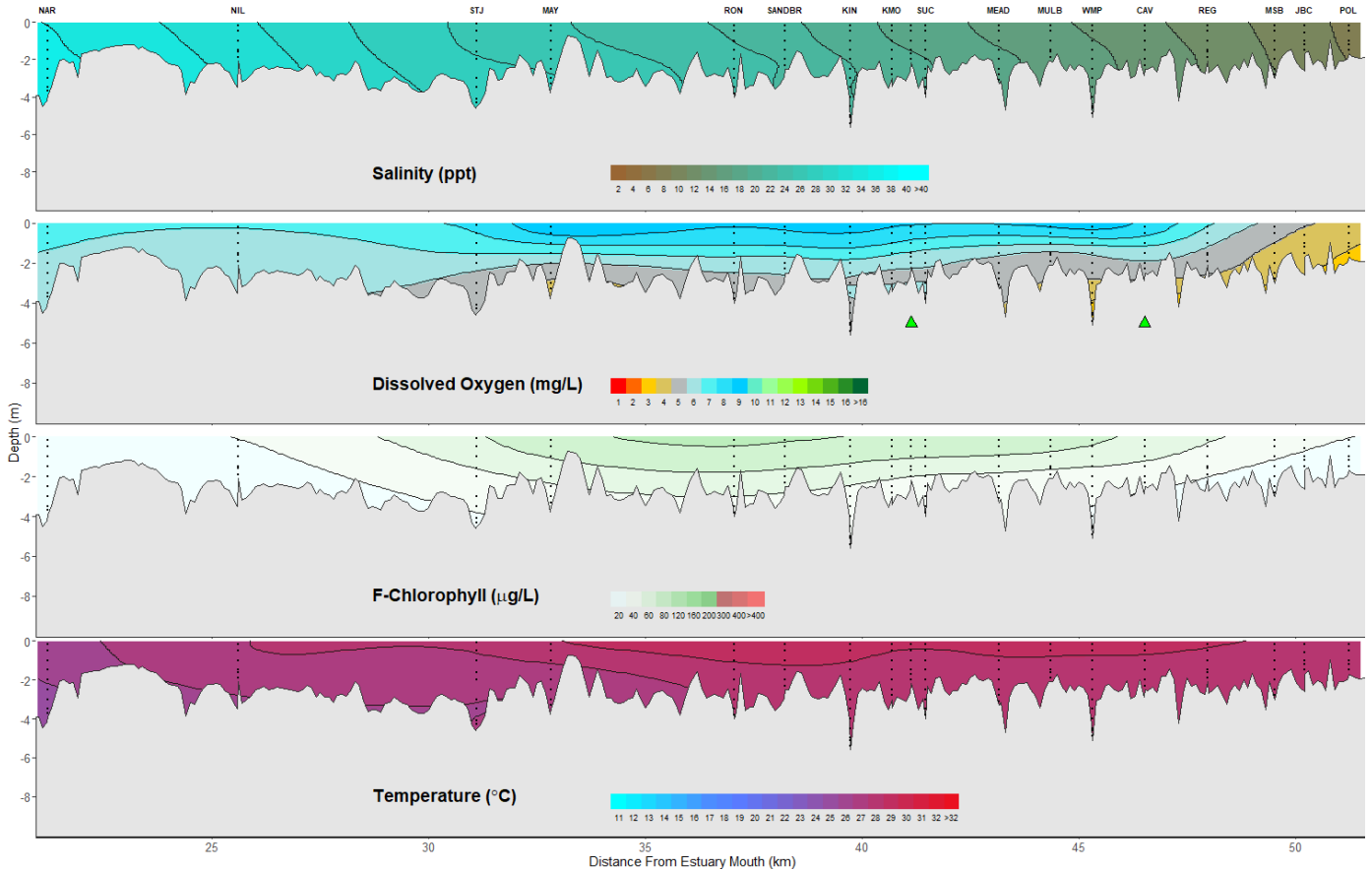
Prepared by

Rivers and Estuaries Science
Biodiversity and Conservation Science
Department of Biodiversity, Conservation and Attractions

Swan Canning Estuary - Water Quality Profiles – 2 February 2026



Middle and Upper Swan Estuary - Water Quality Profiles – 2 February 2026



Date: 2 February 2026

Weather & tide conditions: Conditions were clear with a north-easterly breeze up to 8.2 knots. The predicted tides at Barrack St were 0.55 m at 9:22 am (low tide) and 1.18 m at 11:53 pm (high tide). Perth recorded 0.2 mm of rainfall in the week prior to sampling (Bureau of Meteorology).

Oxygenation: The Guildford and Caversham oxygenation plants were operable and triggered to provide oxygen in the 24 hours prior to sampling.

Lower Swan Canning Estuary (BLA to NAR): The Lower Swan Canning Estuary was hypersaline at BLA, saline over hypersaline at ARM, and saline from HEA to NAR. Waters were oxygenated to well-oxygenated with low chlorophyll fluorescence. Water temperatures ranged from 24 to 25.5 °C.

Middle Swan Estuary (NIL to RON): The Middle Swan Estuary was saline from NIL to STJ, brackish over saline at MAY and brackish at RON. Waters were oxygenated to well-oxygenated, except for bottom waters from MAY which were low in oxygen. Chlorophyll fluorescence was low except for moderate levels in surface and sub-surface waters of MAY and RON. Water temperatures ranged from 25.9 to 28.3 °C.

Upper Swan Estuary (SANDBR to POL): The Upper Swan Estuary was brackish throughout. Waters were oxygenated to well-oxygenated, with low oxygen bottom waters observed at KIN, KMO, from MEAD to WMP and MSB to POL, while low oxygen occurred throughout the water column at JBC and POL. Chlorophyll fluorescence was moderate at most sites, with high levels detected at SUC. Water temperatures ranged from 27.1 to 29.1 °C.

NB: Profile plots are visual interpolations of measured parameters only. Detailed data are available at wir.water.wa.gov.au.

Oxygenation Plant Operational Status:

- ▲ Operating for part or all of the 24 hours prior to sampling
- ▲ Operable but not triggered to operate in the 24 hours prior to sampling
- ▲ Inoperable for part or all of the 24 hours prior to sampling

Definitions:

Salinity – fresh <5, brackish 5-25, saline 25-35, hypersaline >36 ppt
Dissolved oxygen – well-oxygenated >6 mg L⁻¹, oxygenated >4-6 mg L⁻¹, low oxygen >2-4 mg L⁻¹, hypoxic 0.5-2 mg L⁻¹, anoxic <0.5 mg L⁻¹
Chlorophyll fluorescence (low flow): low < 50 µg L⁻¹, moderate 50-150 µg L⁻¹, high 150-400 µg L⁻¹, extreme > 400 µg L⁻¹

Recommended reference: Department of Biodiversity, Conservation and Attractions, 2026. *Swan Canning Estuary water quality profile report, Lower Swan Canning Estuary to Upper Swan Estuary 2 February 2026*. Rivers and Estuaries Science (<https://www.dpaw.wa.gov.au/management/swan-canning-riverpark>)