



# Swan Canning Estuary Water Quality Monitoring Project

## Weekly Water Quality Report

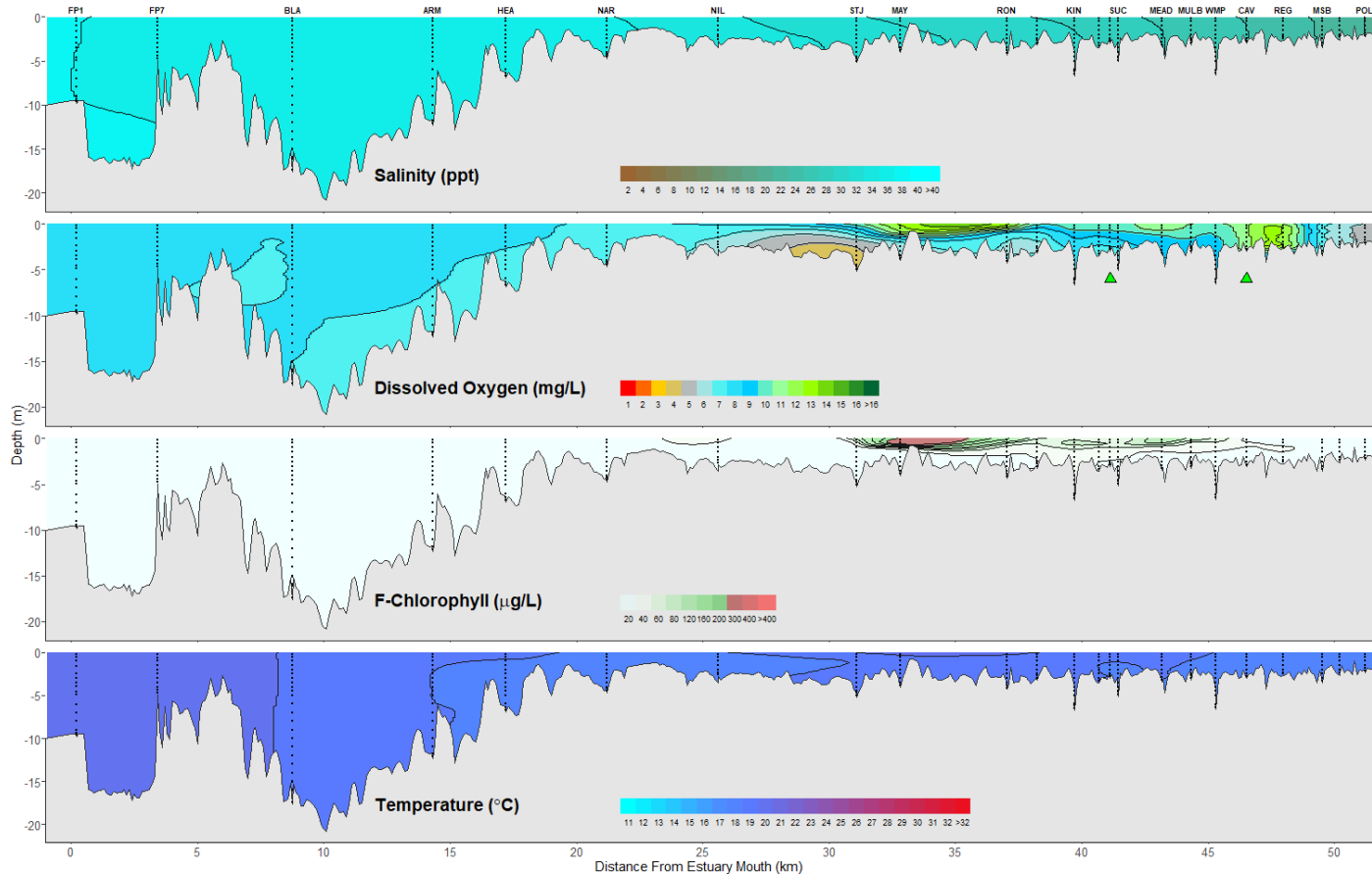
### Lower Swan Canning Estuary to Upper Swan Estuary

18 May 2026

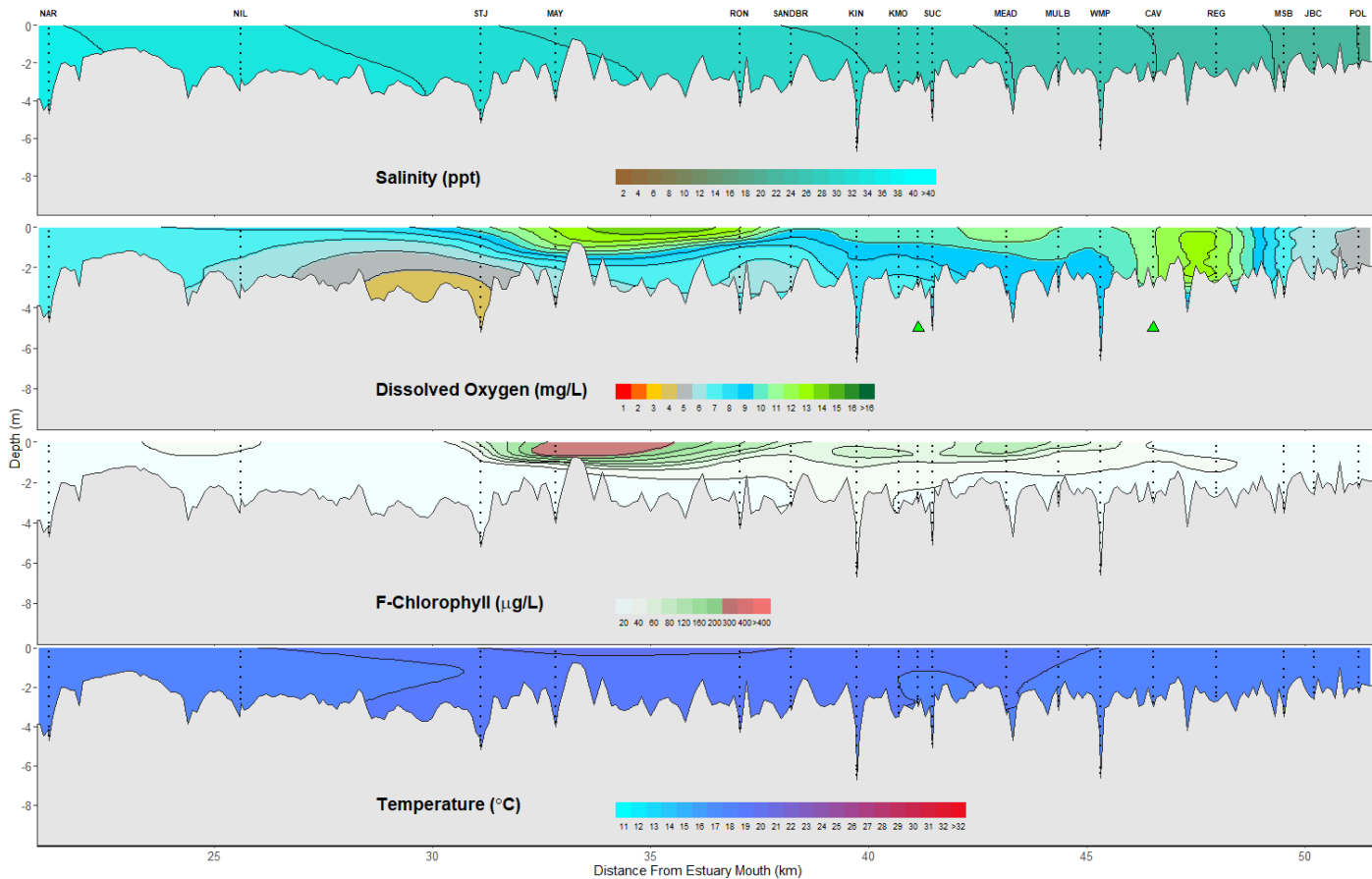
Prepared by

Rivers and Estuaries Science  
Biodiversity and Conservation Science  
Department of Biodiversity, Conservation and Attractions

# Swan Canning Estuary - Water Quality Profiles – 18 May 2026



# Middle and Upper Swan Estuary - Water Quality Profiles – 18 May 2026



Date: 18 May 2026

Weather & tide conditions: Conditions were overcast with a variable breeze of up to 5.7 knots. The predicted tides at Barrack St were 1.38 m at 12:12 am (high tide) and 0.63 m at 11:08 pm (low tide). Perth recorded 8.2 mm of rainfall in the week prior to sampling (Bureau of Meteorology).

Oxygenation: The Guildford and Caversham oxygenation plants were operable and triggered to provide oxygen in the 24 hours prior to sampling.

Lower Swan Canning Estuary (FPI to NAR): The Lower Swan Canning Estuary sites were saline throughout. Waters were well-oxygenated and chlorophyll fluorescence was low throughout. Water temperatures ranged from 17.7 to 19.7 °C.

Middle Swan Estuary (NIL to RON): The Middle Swan Estuary sites were saline throughout. Waters were oxygenated to well-oxygenated waters, except for low oxygen bottom waters at STJ. Chlorophyll fluorescence moderate in the surface waters at STJ and RON, and high in the surface waters at MAY. Water temperatures ranged from 17.4 to 19.3 °C.

Upper Swan Estuary (SANDBR to POL): The Upper Swan Estuary sites were saline from SANDBR to MEAD, brackish over saline at MULB, and brackish from WMP to POL. Waters were oxygenated to well-oxygenated throughout. Chlorophyll fluorescence was moderate in the surface waters from KIN to KMO, and SUC to WMP. Water temperatures ranged from 17.1 to 18.9 °C.

NB: Profile plots are visual interpolations of measured parameters only. Detailed data are available at [wir.water.wa.gov.au](http://wir.water.wa.gov.au).

**Oxygenation Plant Operational Status:**

- ▲ Operating for part or all of the 24 hours prior to sampling
- ▲ Operable but not triggered to operate in the 24 hours prior to sampling
- ▲ Inoperable for part or all of the 24 hours prior to sampling

**Definitions:**

Salinity – fresh <5, brackish 5-25, saline 25-35, hypersaline >36 ppt  
Dissolved oxygen – well-oxygenated >6 mg L<sup>-1</sup>, oxygenated >4-6 mg L<sup>-1</sup>, low oxygen >2-4 mg L<sup>-1</sup>, hypoxic 0.5-2 mg L<sup>-1</sup>, anoxic <0.5 mg L<sup>-1</sup>  
Chlorophyll fluorescence (low flow): low < 50 µg L<sup>-1</sup>, moderate 50-150 µg L<sup>-1</sup>, high 150-400 µg L<sup>-1</sup>, extreme > 400 µg L<sup>-1</sup>