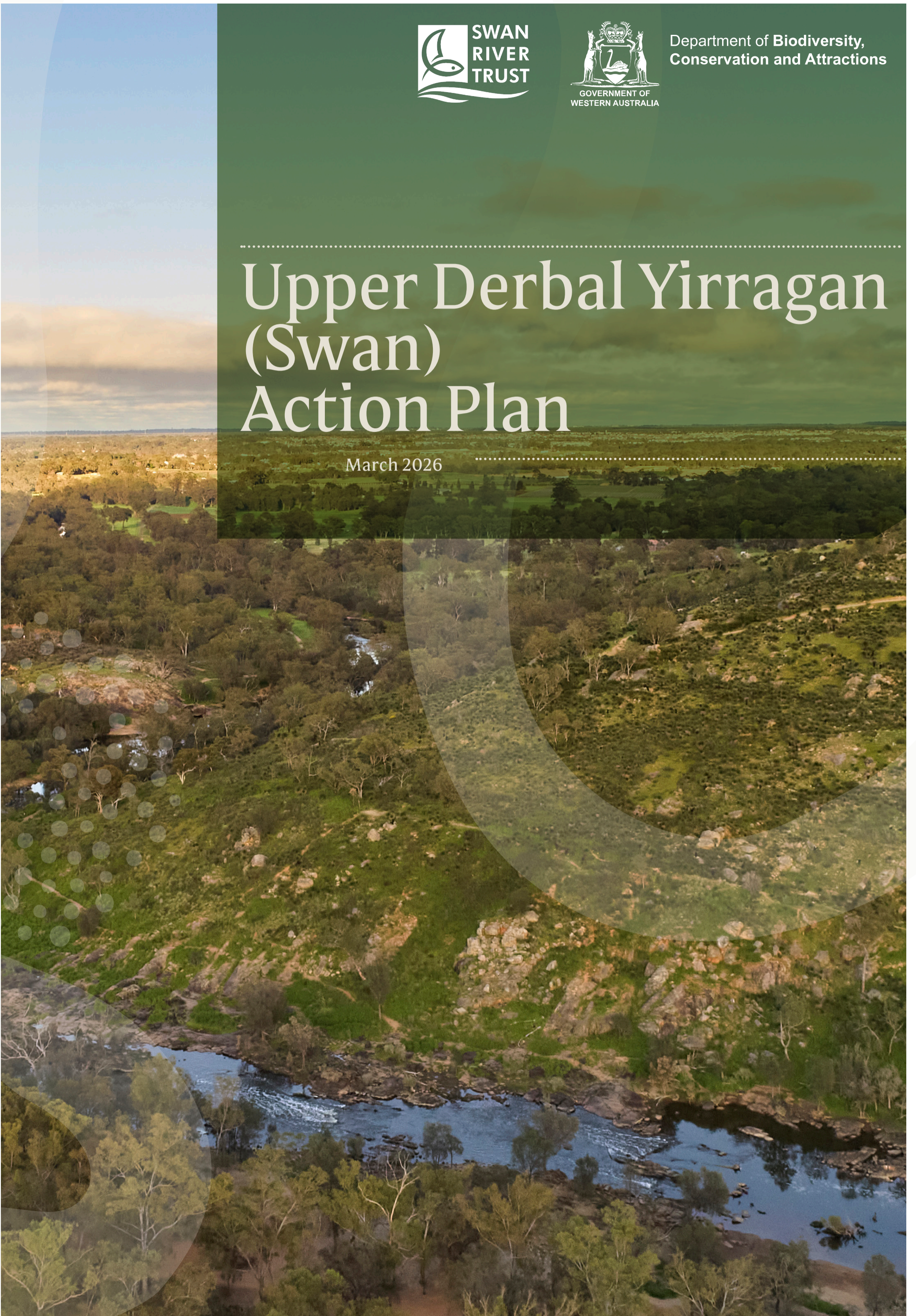




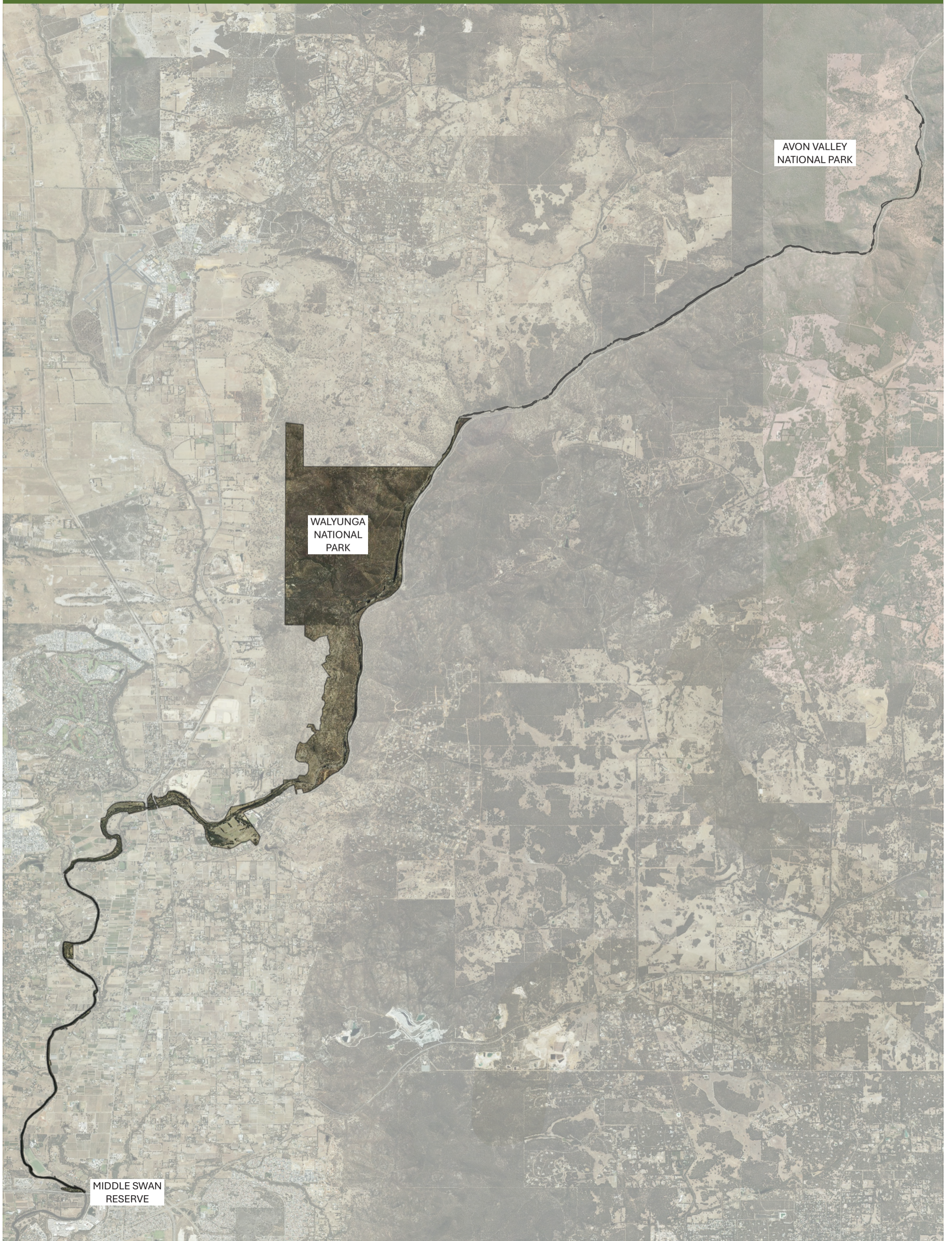
Department of Biodiversity,
Conservation and Attractions

Upper Derbal Yirragan (Swan) Action Plan

March 2026



Upper Derbal Yirragan (Swan) Locality



AVON VALLEY
NATIONAL PARK

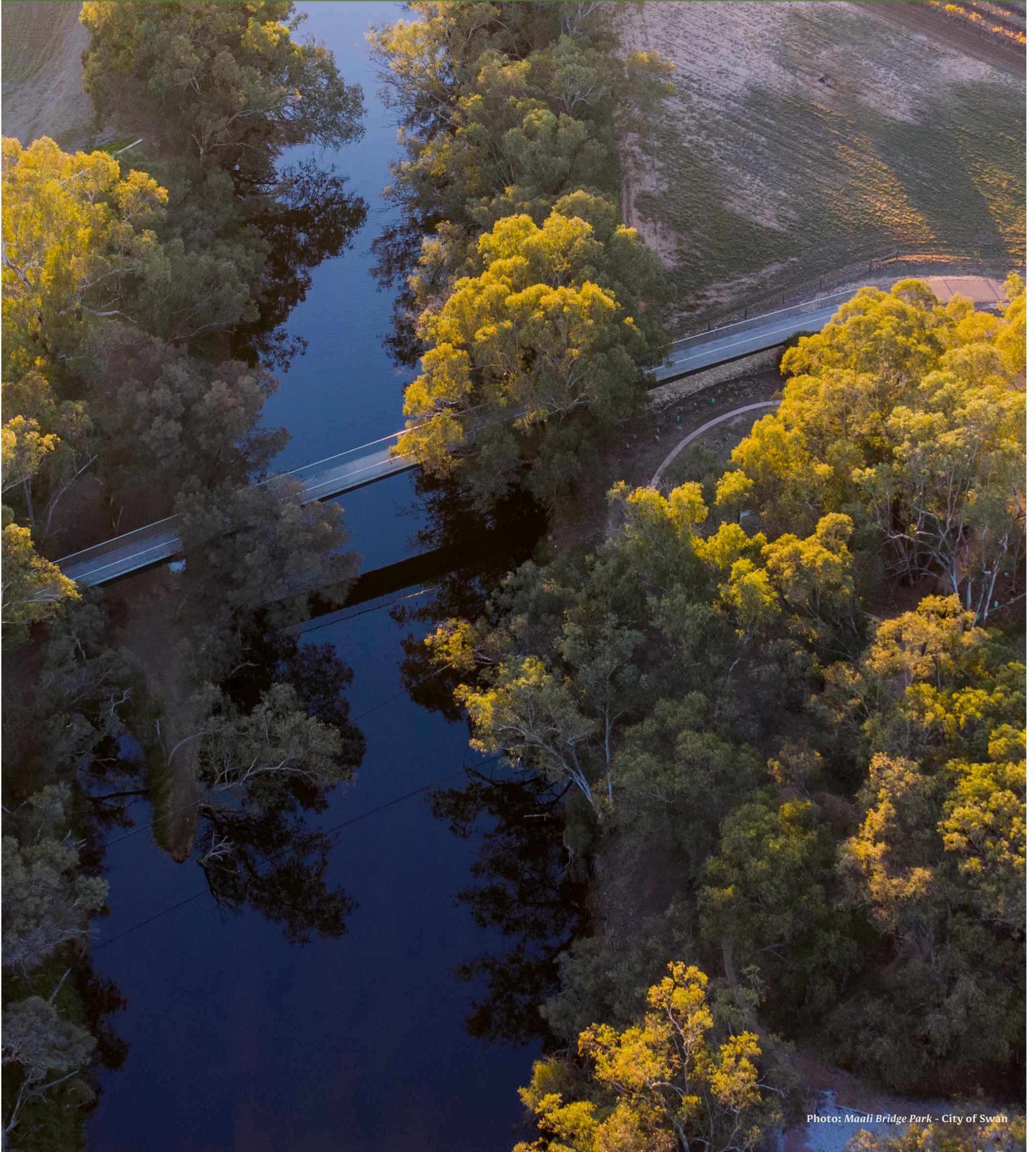
WALYUNGA
NATIONAL
PARK

MIDDLE SWAN
RESERVE

Introduction

The Upper Derbal Yirragan (Swan) Action Plan (the Action Plan) aims to support achievement of the locality-specific policy statements contained within the Upper Derbal Yirragan (Swan) Locality Plan. The actions should be delivered when planning and undertaking works in the locality, as opportunities present.

The Action Plan is a guidance document and can be updated as needed.



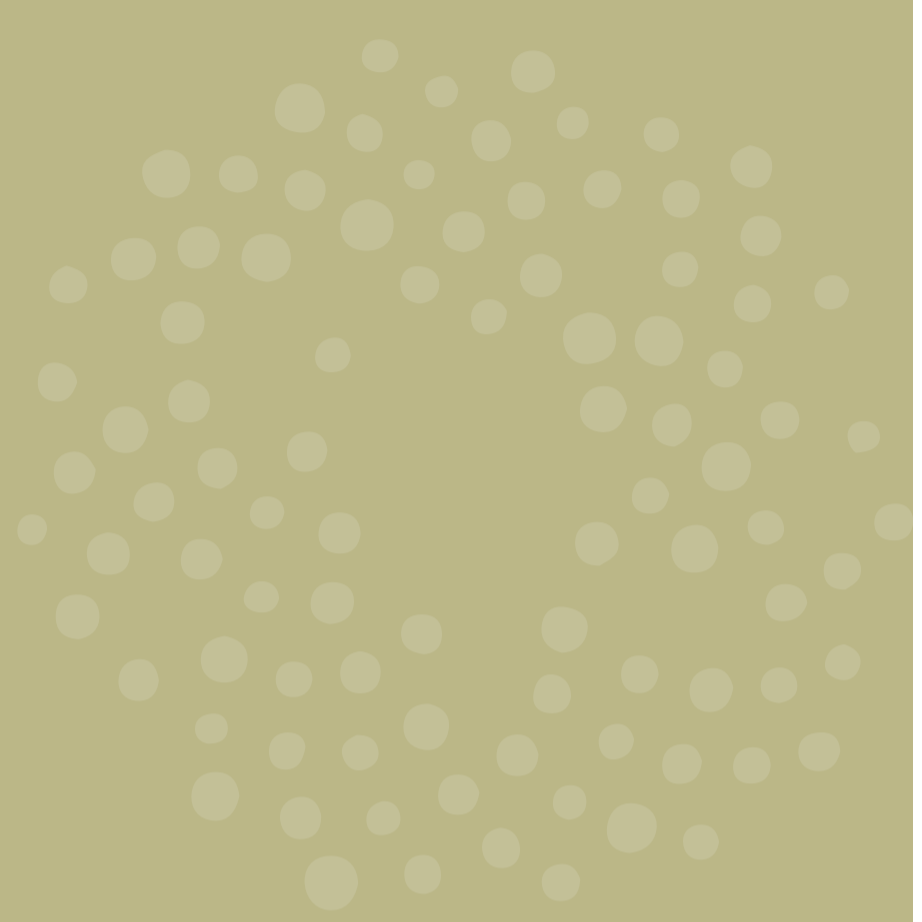
| Action <i>Delivery is subject to funding and resources</i> | Timing (years) 0-2, 2-5, 5+, ongoing | Key agencies | Notes |
|--|---|----------------------------|---|
| UDY.1 Undertake an assessment of and long-term planning for foreshore Regional Open Space reserve in this locality, particularly where: <ol style="list-style-type: none"> i. there is currently no provision of Regional Open Space reserve; ii. the characteristics of the land or qualities of the area should be reflected; iii. it is currently difficult to provide public access, maintenance access or other public use, such as allowing access at the top of an embankment if other locations are not feasible; iv. the natural functions of the river should be accommodated; v. a buffer should be established between the adjoining land use and waterway, such as a buffer to agriculture, horticulture or equestrian activities, to minimise sediment, nutrient, pesticide and organic matter inputs; vi. there is remnant vegetation, such as providing an important wildlife corridor connecting Walyunga National Park and Avon Valley National Park, or a Bush Forever area; vii. there is a tributary that connects to the Derbal Yiragan (Swan River), such as Jane Brook, Susannah Brook, Saint Leonards Creek and the confluence of the Brockman River, Henley Brook and Gynning (Ellen Brook); viii. there is opportunity to create natural landscape character as a buffer between the Derbal Yiragan (Swan River) foreshore and the rural land uses in the Swan Valley, Yagan Memorial Park, Pullman Park and between Upper Swan and Brigadoon; and ix. there are freehold lots contained entirely within the FPM 1 in 100 (1%) annual exceedance probability floodway. | 5+ | DBCA, SRT, CoS, WAPC | Consider as part of strategic planning. |
| UDY.2 Investigate options for additional public foreshore parks and public kayak/canoe launching facilities or beach river access points, downstream of Walyunga National Park. | 5+ | DBCA, CoS, WAPC | Consider as part of strategic planning. |
| UDY.3 Investigate options for establishing a designated trail along the Derbal Yiragan (Swan River) foreshore, such as expanding the Swan Valley cycle trail or the Swan Canning Riverpark Iconic Trails Project. | 5+ | DBCA, CoS, WAPC, DTMI, TWA | Consider as part of strategic planning. |
| UDY.4 Prioritise development and implementation of a program to establish a minimum 30-metre-wide revegetated riverbank corridor using local plant species to improve long-term environmental and amenity outcomes. The Derbal Yiragan (Swan River) is a major ecological linkage in the Swan Valley. | 2-5 | DBCA, CoS, WAPC | Consider as part of strategic planning or relevant proposals. |
| UDY.5 Work with landowners to improve land management practices that protect soil health and minimise nutrient and non-nutrient contaminant inputs into the river, with a particular focus on rural pursuits within the FPM 1 in 100 (1%) annual exceedance probability floodway. | 5+ | DBCA, CoS, DWER, DPIRD | |
| UDY.6 Collaborate with the local government to determine the views and view corridors from select public vantage points to be protected and maintained. Locations to be considered include Bells Rapids, the steep slope of Mount Mambup and the rise of the scarp at Brigadoon, Yagan Memorial Park, Boongarup Pool, Walyunga Pool and Syd's Rapids. | 2-5 | DBCA, CoS | |
| UDY.7 Implement the recommendations of the <i>Saint Leonards Creek Foreshore Condition Assessment</i> (DBCA, 2020). | 5+ | DBCA, CoS, DWER, WAPC | |
| UDY.8 Investigate addition of the Bells Rapids Waterfall to Bells Rapids Park to assist with coordinated management activities. | 2-5 | DBCA, CoS, WAPC | |



| | |
|-------|---|
| CoS | City of Swan |
| DBCA | Department of Biodiversity, Conservation and Attractions |
| DPIRD | Department of Primary Industries and Regional Development |
| DTMI | Department of Transport and Major Infrastructure |
| DWER | Department of Water and Environmental Regulation |
| SRT | Swan River Trust |
| TWA | Tourism Western Australia |
| WAPC | Western Australian Planning Commission |



Department of Biodiversity,
Conservation and Attractions



Department of Biodiversity, Conservation and Attractions

17 Dick Perry Avenue, Kensington 6151

Locked Bag 104, Bentley DC, WA 6983

Phone: (08) 9278 0900

Web: www.dbca.wa.gov.au

Email: rivers.planning@dbca.wa.gov.au

Front page photo: *Bells Rapids* - City of Swan