



Swan Canning Estuary Water Quality Monitoring Project

Weekly Water Quality Report

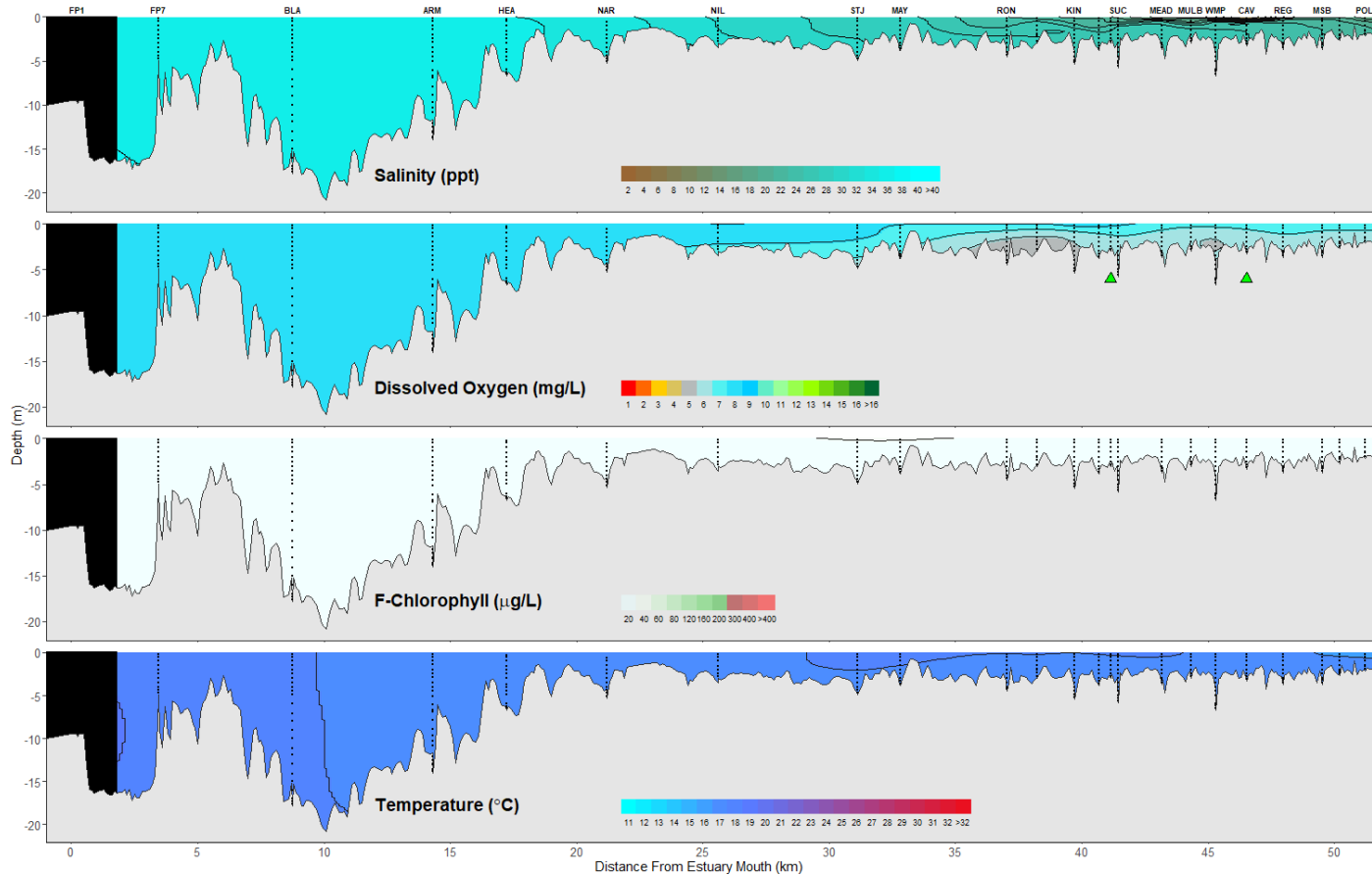
Lower Swan Canning Estuary to Upper Swan Estuary

2 June 2026

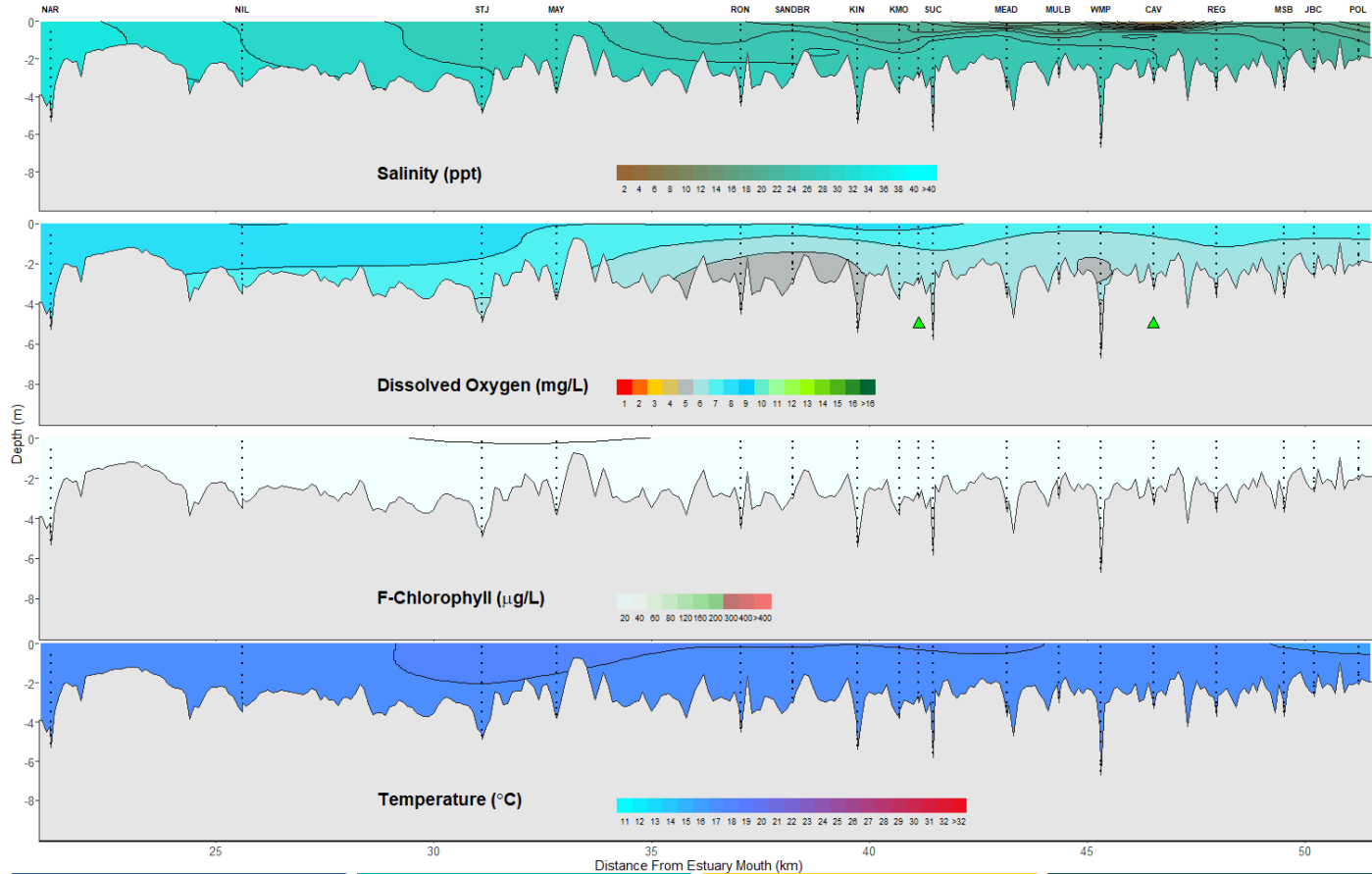
Prepared by

Rivers and Estuaries Science
Biodiversity and Conservation Science
Department of Biodiversity, Conservation and Attractions

Swan Canning Estuary - Water Quality Profiles – 2 June 2026



Middle and Upper Swan Estuary - Water Quality Profiles – 2 June 2026



Date: 2 June 2026

Weather & tide conditions: Conditions were cloudy with variable winds of up to 11.7 knots. The predicted tides at Barrack St were 1.32 m at 12:00 am (high tide) and 0.74 m at 10:28 pm (low tide). Perth recorded 62 mm of rainfall in the week prior to sampling (Bureau of Meteorology). A storm surge was evident from 29 May to 1 June and peaked at 78 cm at Barrack St tide station (Department of Transport and Infrastructure). This coincided with high tides, resulting in inundation of low-lying areas adjacent to the estuary.

Oxygenation: The Guildford and Caversham oxygenation plants were operating and providing oxygen in the 24 hours prior to sampling.

Lower Swan Canning Estuary (FP7 to NAR): The Lower Swan Canning Estuary was saline and well-oxygenated with low chlorophyll fluorescence. Water temperatures ranged from 16.0 to 17.8 °C.

Middle Swan Estuary (NIL to RON): The Middle Swan Estuary was saline except for brackish surface waters at RON. Waters were oxygenated to well-oxygenated and chlorophyll fluorescence was low. Water temperatures ranged from 16.3 to 17.2 °C.

Upper Swan Estuary (SANDBR to POL): The Upper Swan Estuary was brackish, with saline bottom water from SANDBR to SUC. Waters were oxygenated to well-oxygenated throughout and chlorophyll fluorescence was low. Water temperatures ranged from 15.8 to 17.6 °C.

NB: FP1 was not sampled due to large swells causing unfavourable conditions for sampling.

NB: Profile plots are visual interpolations of measured parameters only. Detailed data are available at wir.water.wa.gov.au.

Oxygenation Plant Operational Status:

- ▲ Operating for part or all of the 24 hours prior to sampling
- ▲ Operable but not triggered to operate in the 24 hours prior to sampling
- ▲ Inoperable for part or all of the 24 hours prior to sampling

Definitions:

Salinity – fresh <5, brackish 5-25, saline 25-35, hypersaline >36 ppt
Dissolved oxygen – well-oxygenated >6 mg L⁻¹, oxygenated >4-6 mg L⁻¹, low oxygen >2-4 mg L⁻¹, hypoxic 0.5-2 mg L⁻¹, anoxic <0.5 mg L⁻¹
Chlorophyll fluorescence (low flow): low < 50 µg L⁻¹, moderate 50-150 µg L⁻¹, high 150-400 µg L⁻¹, extreme > 400 µg L⁻¹